

MONUMENT 232

CERTIFICATE OF LOCATION OF GOVERNMENT CORNER

East Quarter Corner of Section 28, Township 30 North, Range 23 West, County of Ramsey, State of Minnesota.

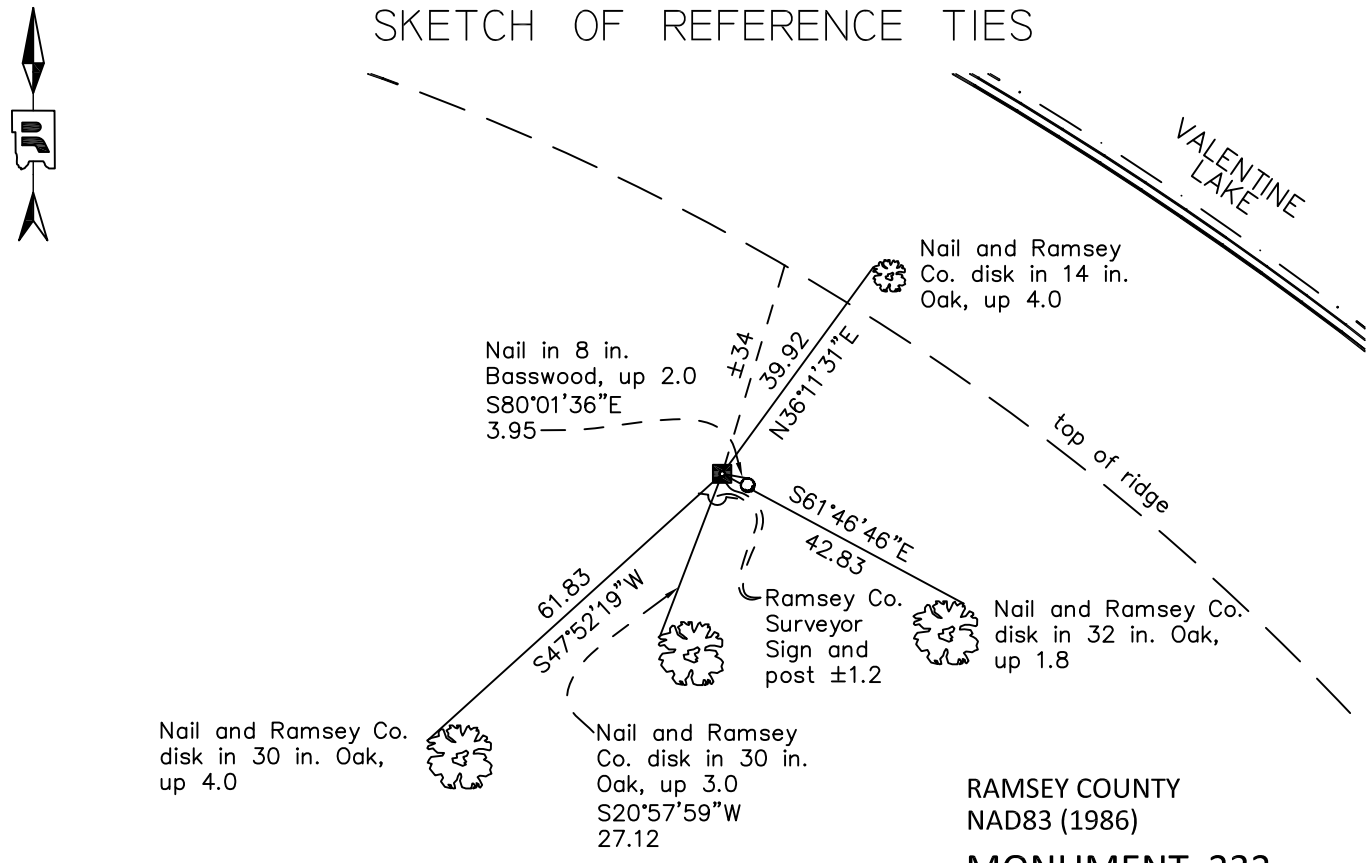
At the corner location shown on the sketch

On October 8, 2010 found a granite monument with drill hole, up 0.2 feet.

left monument as found raised/lowered monument removed monument (explain)

On _____ placed a _____

SKETCH OF REFERENCE TIES



RAMSEY COUNTY
NAD83 (1986)

MONUMENT 232

ALL DISTANCES ARE SHOWN IN U.S. SURVEY FEET.
BEARINGS ARE FOR TIE REFERENCE PURPOSES ONLY.

Drafted by: DDB

X= 555769.754 (Easting)
Y= 197173.320 (Northing)

Statements of evidence relative to this corner are on the following page.

I hereby certify that this document was prepared by me or under my direct supervision and that I am a duly Licensed Land Surveyor under the laws of the State of Minnesota.

Daniel D. Baar Date _____
Minnesota License No. 45816

- County Surveyor Land Surveyor
 Deputy County Surveyor

OFFICE OF COUNTY SURVEYOR
County of Ramsey

I hereby certify that this document was filed in the County Surveyor's office this _____ day of _____, 20 ____.

Craig W. Hinzman, L.S.
Ramsey County Surveyor

MONUMENT 232

Found granite monument up 3 in. and retied, November 27, 1974.

Found granite monument; retied and set sign and post, August 14, 1996.

Retied monument, October 25, 2005.

Retied monument, October 8, 2010.