

MONUMENT 225

CERTIFICATE OF LOCATION OF GOVERNMENT CORNER

Southeast Corner of Section 24, Township 30 North, Range 22 West, County of Ramsey, State of Minnesota.

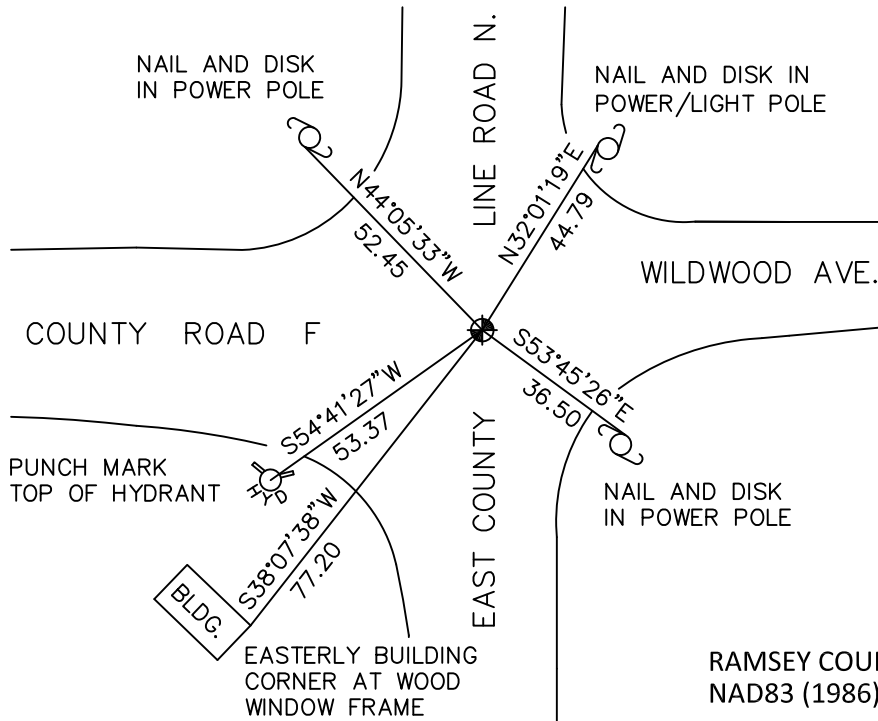
At the corner location shown on the sketch

On July 2, 2010 found a cast iron monument, down 0.1 feet.

left monument as found raised/lowered monument removed monument (explain)

On _____ placed a _____

SKETCH OF REFERENCE TIES



RAMSEY COUNTY
NAD83 (1986)

MONUMENT 225

ALL DISTANCES ARE SHOWN IN U.S. SURVEY FEET.
BEARINGS ARE FOR TIE REFERENCE PURPOSES ONLY.

X= 602979.144 (Easting)
Y= 200010.657 (Northing)

Statements of evidence relative to this corner are on the following page.

I hereby certify that this document has been prepared by me or under my direct supervision this _____ day of _____, 20____.

Minnesota License No. _____

- County Surveyor Deputy County Surveyor Land Surveyor

OFFICE OF COUNTY SURVEYOR
County of Ramsey

I hereby certify that this document was filed in the County Surveyor's office this _____ day of _____, 20____.

Craig W. Hinzman, L.S.
Ramsey County Surveyor

MONUMENT 225

Found a granite monument, down 0.5 ft.; may have had an iron pipe on each side of monument, but did not dig up, May 28, 1974.

Placed a short cast iron monument over granite monument, December 3, 1974.

Tied monument, January 29, 1976.

Ties checked, January 11, 1983.

Retied monument, June 25, 1991.

Ties checked, June 12, 1998.

Found a short cast iron monument missing and tied granite monument, March 29, 2005.

Replaced missing cast iron monument with a 3 1/2 in. cast iron monument on top of granite monument and cemented into place, July 11, 2005.

Tied monument, July 2, 2010.