

MONUMENT 224

CERTIFICATE OF LOCATION OF GOVERNMENT CORNER

South Quarter of Section 24, Township 30 North, Range 22 West, County of Ramsey,
State of Minnesota.

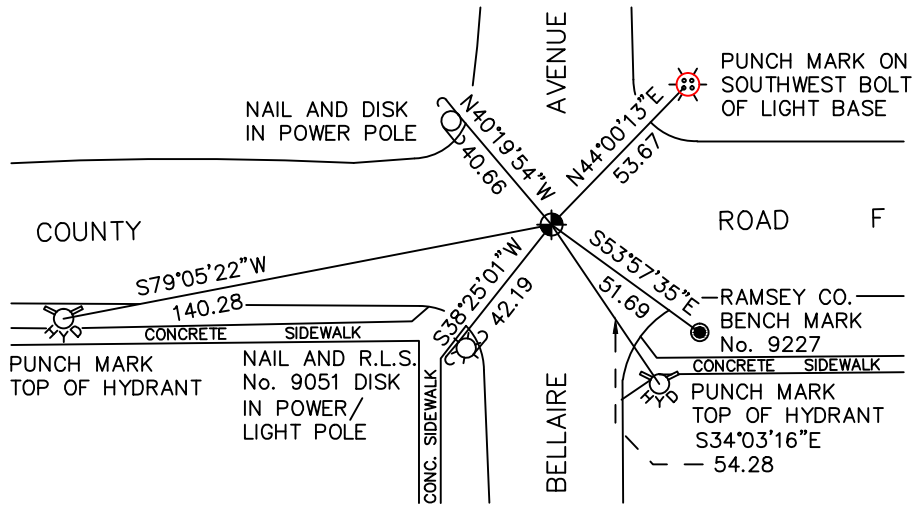
At the corner location shown on the sketch

On July 6, 2010 found a cast iron monument, down 0.05 feet.

left monument as found raised/lowered monument removed monument (explain)

On _____ placed a _____

SKETCH OF REFERENCE TIES



RAMSEY COUNTY
NAD83 (1986)

MONUMENT 224

X= 600349.554 (Easting)
Y= 199994.148 (Northing)

ALL DISTANCES ARE SHOWN IN U.S. SURVEY FEET.
BEARINGS ARE FOR TIE REFERENCE PURPOSES ONLY.

Statements of evidence relative to this corner are on the following page.

I hereby certify that this document has been prepared by me or under my direct supervision this _____ day of _____, 20____.

SIGNATURE

Minnesota License No. _____

- County Surveyor Land Surveyor
 Deputy County Surveyor

OFFICE OF COUNTY SURVEYOR
County of Ramsey

I hereby certify that this document was filed in the County Surveyor's office this _____ day of _____, 20____.

SIGNATURE
Craig W. Hinzman, L.S.
Ramsey County Surveyor

MONUMENT 224

Found a granite monument down 0.3 ft., May 28, 1974.

Placed a cast iron cap and bolt monument over granite, June 4, 1974.

Tied monument, June 25, 1974.

Retied monument, January 29, 1976.

Checked ties, June 25, 1991.

Monument removed for maintenance, June 11, 1993.

Placed P.K. nail at location and tied, September 3, 1993.

Set a 20 in. cast iron monument, October, 1994.

Short ties checked, June 12, 1998.

Tied monument, March 29, 2005.

Retied monument, July 6, 2010.