

# MONUMENT 223W

## CERTIFICATE OF LOCATION OF GOVERNMENT CORNER

West Witness Monument to the Southeast Corner of Section 23, Township 30 North,  
Range 22 West, County of Ramsey, State of Minnesota.

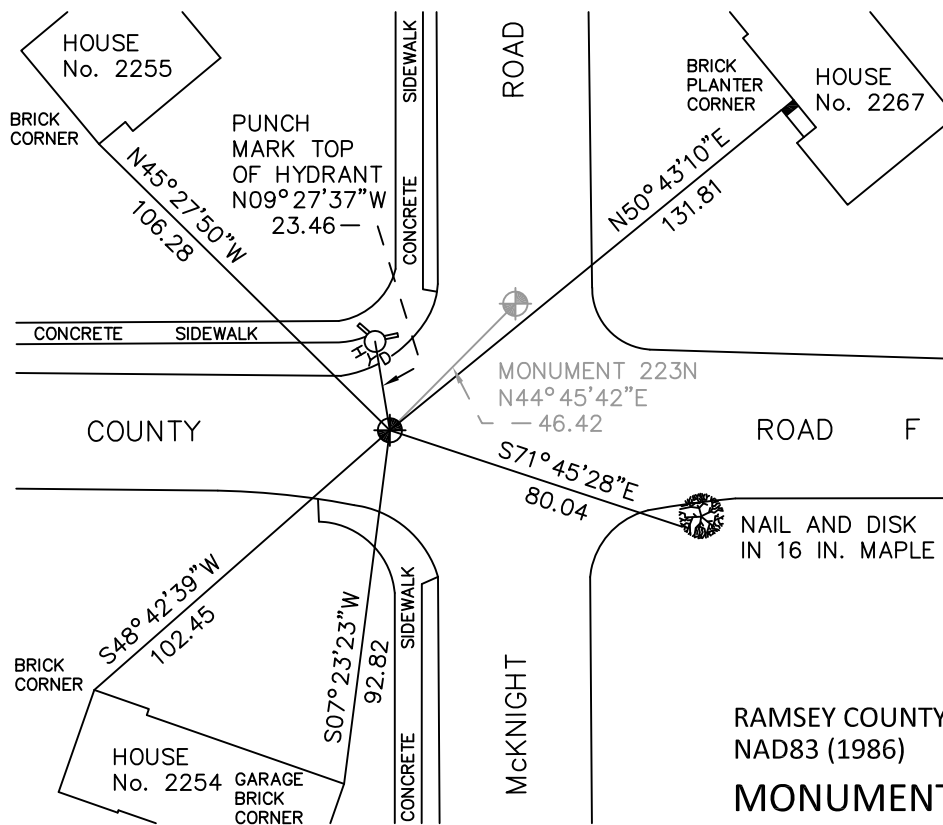
At the corner location shown on the sketch

On July 19, 2010 found a cast iron monument, down 0.1 feet.

left monument as found       raised/lowered monument       removed monument (explain)

On \_\_\_\_\_ placed a \_\_\_\_\_

### SKETCH OF REFERENCE TIES



ALL DISTANCES ARE SHOWN IN U.S. SURVEY FEET.  
BEARINGS ARE FOR TIE REFERENCE PURPOSES ONLY.

X= 597680.329 (Easting)  
Y= 199969.801 (Northing)

Statements of evidence relative to this corner are on the following page.

I hereby certify that this document has been prepared by me or under my direct supervision this \_\_\_\_\_ day of \_\_\_\_\_, 20\_\_\_\_.

Minnesota License No. \_\_\_\_\_

- County Surveyor       Deputy County Surveyor       Land Surveyor

OFFICE OF COUNTY SURVEYOR  
County of Ramsey

I hereby certify that this document was filed in the County Surveyor's office this \_\_\_\_\_ day of \_\_\_\_\_, 20\_\_\_\_.

Michael D. Fiebiger, P.L.S.  
Ramsey County Surveyor

## MONUMENT 223W

Manhole at intersection. See Survey Book No.1 for location check. Set a cast iron monument 33.00 ft. west of corner location, on the south line of the Southeast Quarter, August 25, 1975.

Tied monument, March 22, 1976.

Checked short ties, June 25, 1991.

Checked short ties, June 12, 1998.

Retied monument, March 29, 2005.

Monument destroyed due to water main break, December, 2005.

Reset a 20 in. cast iron monument, using monument ties of record, June 16, 2006.

Tied monument, July 19, 2010.