

MONUMENT 21SC

CERTIFICATE OF LOCATION OF GOVERNMENT CORNER

Northeast Corner of Section 3, Township 30 North, Range 22 West, County of Ramsey, State of Minnesota.

At the corner location shown on the sketch

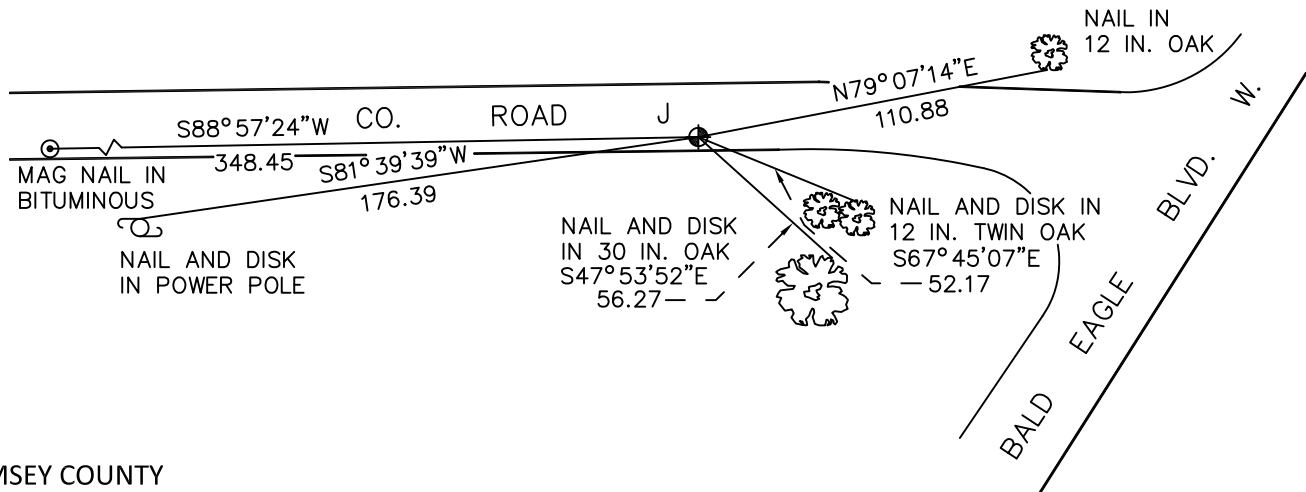
On July 12, 2010 found a cast iron monument, marked "3RD CORRECTION LINE"

(2744.41 feet east of monument 19E), flush.

left monument as found raised/lowered monument removed monument (explain)

On _____ placed a _____

SKETCH OF REFERENCE TIES



RAMSEY COUNTY
NAD83 (1986)

MONUMENT 21SC

X= 592401.486 (Easting)
Y= 221527.917 (Northing)

"CLOSING CORNER" IS 5.20 FT. NORTH.

ALL DISTANCES ARE SHOWN IN U.S. SURVEY FEET.
BEARINGS ARE FOR TIE REFERENCE PURPOSES ONLY.

Statements of evidence relative to this corner are on the following page.

I hereby certify that this document has been prepared by me or under my direct supervision this _____ day of _____, 20____.

Minnesota License No. _____

SIGNATURE

- County Surveyor
 Deputy County Surveyor Land Surveyor

OFFICE OF COUNTY SURVEYOR
County of Ramsey

I hereby certify that this document was filed in the County Surveyor's office this _____ day of _____, 20____.

Michael D. Fiebiger, P.L.S.
Ramsey County Surveyor

SIGNATURE

MONUMENT 21SC

Found a granite monument, down 0.1 ft., in center line of the road, May 6, 1974.

Tied monument, October 21, 1974.

Retied cast iron cap, flush, December 28, 1992.

Set a 20 in. cast iron monument marked, "3RD CORRECTION LINE", 5.18 ft. south of "Closing Corner" (original granite monument location), July, 1996.

Ties checked, June 15, 1998.

Retied monument, October 11, 2005.

Retied monument, July 12, 2010.