

MONUMENT 213

CERTIFICATE OF LOCATION OF GOVERNMENT CORNER

Northwest Corner of Section 30, Township 30 North, Range 22 West, County of Ramsey, State of Minnesota.

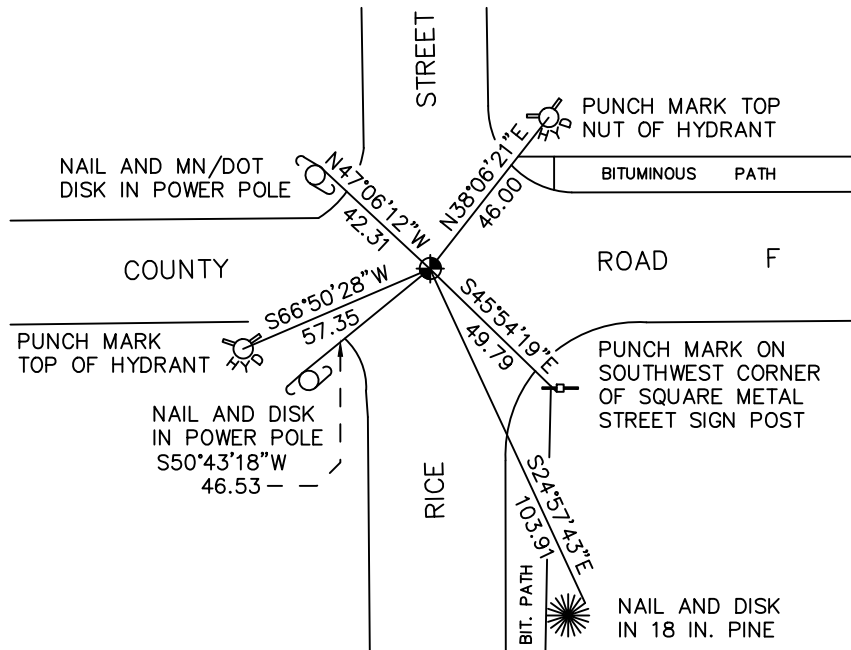
At the corner location shown on the sketch

On June 17, 2010 found a cast iron monument, flush.

left monument as found raised/lowered monument removed monument (explain)

On _____ placed a _____

SKETCH OF REFERENCE TIES



RAMSEY COUNTY
NAD83 (1986)

MONUMENT 213

X= 571569.032 (Easting)
Y= 199902.974 (Northing)

ALL DISTANCES ARE SHOWN IN U.S. SURVEY FEET.
BEARINGS ARE FOR TIE REFERENCE PURPOSES ONLY.

Statements of evidence relative to this corner are on the following page.

I hereby certify that this document has been prepared by me or under my direct supervision this _____ day of _____, 20____.

SIGNATURE

Minnesota License No. _____

- County Surveyor Land Surveyor
 Deputy County Surveyor

OFFICE OF COUNTY SURVEYOR
County of Ramsey

I hereby certify that this document was filed in the County Surveyor's office this _____ day of _____, 20____.

SIGNATURE

Craig W. Hinzman, L.S.
Ramsey County Surveyor

MONUMENT 213

Found a granite monument, down 0.3 ft., tied, 1975.

Cast iron cap and bolt monument placed, no date given in field book.

Tied cast iron monument, February 1, 1991.

Removed cap and bolt monument for Maintenance Department, July 10, 1992.

Set a 4 5/8 in. cast iron monument with "Quick Set 45" concrete, November 10, 1992.

Tied monument, June 10, 1998.

Retied monument, March 14, 2005.

Retied monument, June 17, 2010.