

MONUMENT 209

CERTIFICATE OF LOCATION OF GOVERNMENT CORNER

Northeast Corner of Section 27, Township 30 North, Range 23 West, County of Ramsey, State of Minnesota.

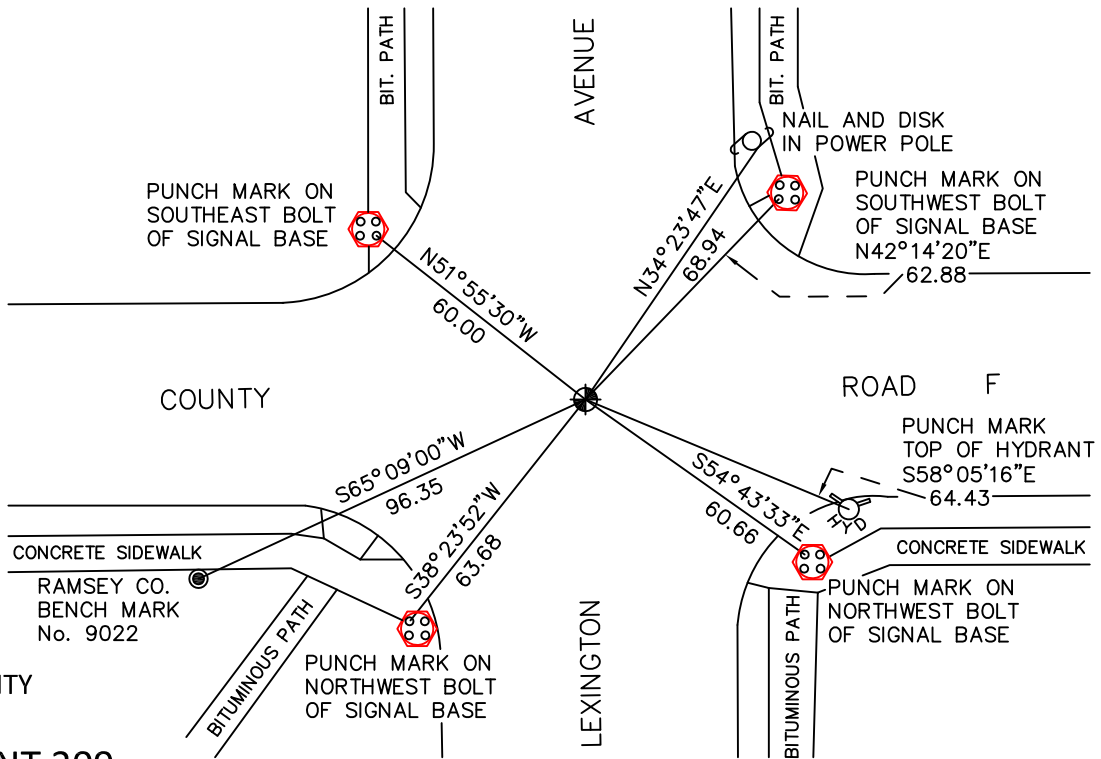
At the corner location shown on the sketch

On March 22, 2010 found a cast iron monument, within a cast iron manhole assembly.

left monument as found raised/lowered monument removed monument (explain)

On _____ placed a _____

SKETCH OF REFERENCE TIES



RAMSEY COUNTY
NAD83 (1986)
MONUMENT 209

X= 561012.137 (Easting)
Y= 199845.246 (Northing)

ALL DISTANCES ARE SHOWN IN U.S. SURVEY FEET.
BEARINGS ARE FOR TIE REFERENCE PURPOSES ONLY.

Statements of evidence relative to this corner are on the following page.

I hereby certify that this document has been prepared by me or under my direct supervision this _____ day of _____, 20____.

Minnesota License No. _____

- County Surveyor Deputy County Surveyor Land Surveyor

OFFICE OF COUNTY SURVEYOR
County of Ramsey

I hereby certify that this document was filed in the County Surveyor's office this _____ day of _____, 20____.

Michael D. Fiebigler, P.L.S.
Ramsey County Surveyor

MONUMENT 209

Found an iron pipe in concrete; granite monument down 0.31 ft.; placed a bolt and cast iron cap, July 17, 1975.

Tied monument, July 28, 1975.

Monument removed by Ramsey County Construction Department; set a 20 in. cast iron monument after construction was completed, 1983.

Tied monument, February 1, 1991.

Tied out monument, April 21, 2000.

Lowered monument and set an 18 in. pipe, April 28, 2000.

Set a cast iron manhole assembly, June 15, 2000.

Tied monument, March 14, 2005.

Retied monument, March 22, 2010.