

MONUMENT 208

CERTIFICATE OF LOCATION OF GOVERNMENT CORNER

South Quarter Corner of Section 22, Township 30 North, Range 23 West, County of Ramsey, State of Minnesota.

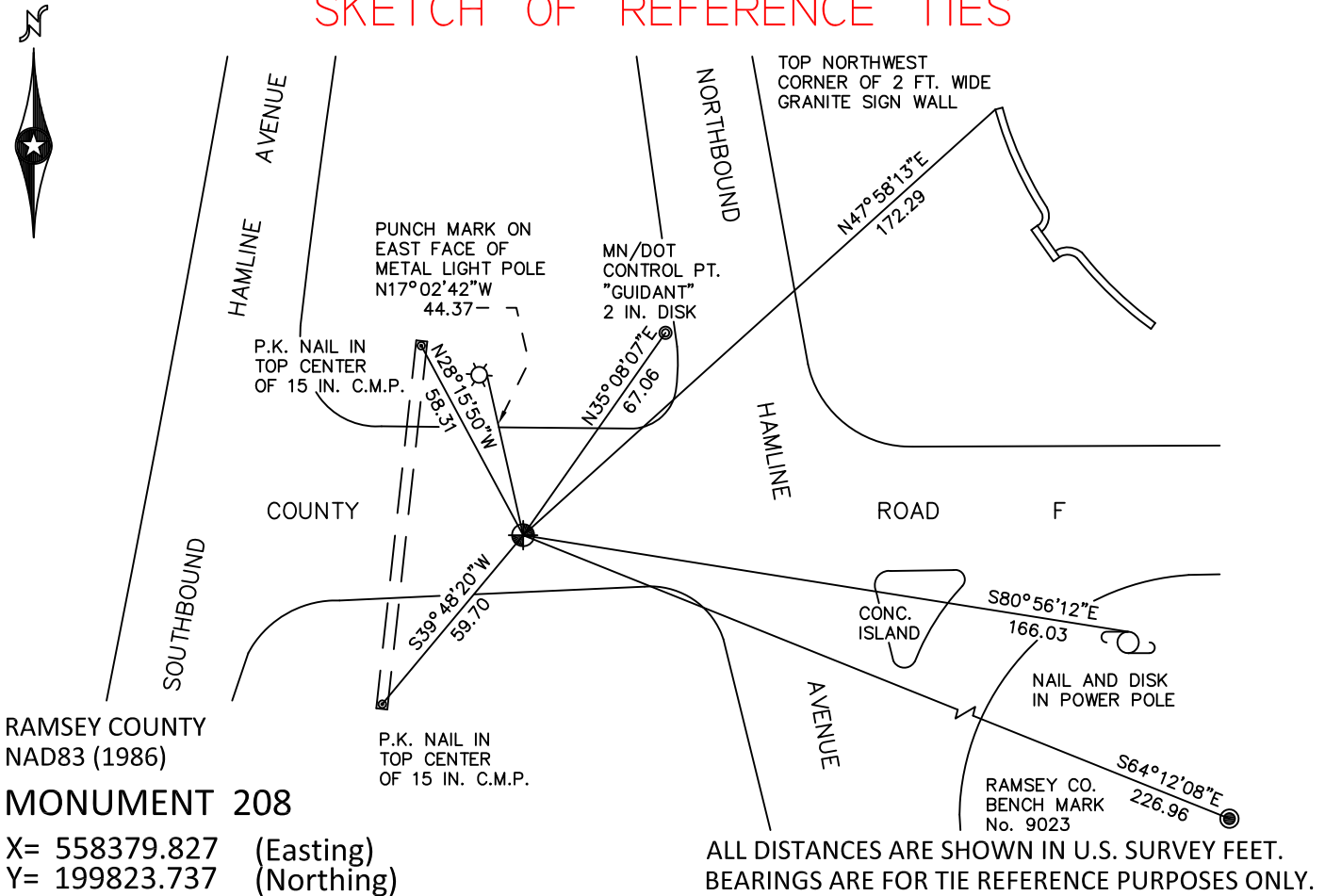
At the corner location shown on the sketch

On March 18, 2010 found a cast iron monument, down 0.35 feet.

left monument as found raised/lowered monument removed monument (explain)

On _____ placed a _____

SKETCH OF REFERENCE TIES



RAMSEY COUNTY
NAD83 (1986)
MONUMENT 208

X= 558379.827 (Easting)
Y= 199823.737 (Northing)

Statements of evidence relative to this corner are on the following page.

I hereby certify that this document has been prepared by me or under my direct supervision this _____ day of _____, 20____.

SIGNATURE

Minnesota License No. _____

County Surveyor
 Deputy County Surveyor Land Surveyor

OFFICE OF COUNTY SURVEYOR
County of Ramsey

I hereby certify that this document was filed in the County Surveyor's office this _____ day of _____, 20____.

SIGNATURE

Michael D. Fiebiger, P.L.S.
Ramsey County Surveyor

MONUMENT 208

Found a cast iron monument, flush, May 31, 1974.

Tied monument, August 14, 1974.

Retied monument, February 1, 1991.

Retied monument, December 6, 2002.

Retied monument, March 14, 2005.

Retied monument, March 18, 2010.