

# MONUMENT 197N

## CERTIFICATE OF LOCATION OF GOVERNMENT CORNER

Monument on the North-South Quarter Line of Section 23, Township 30 North, Range 22 West, County of Ramsey, State of Minnesota.

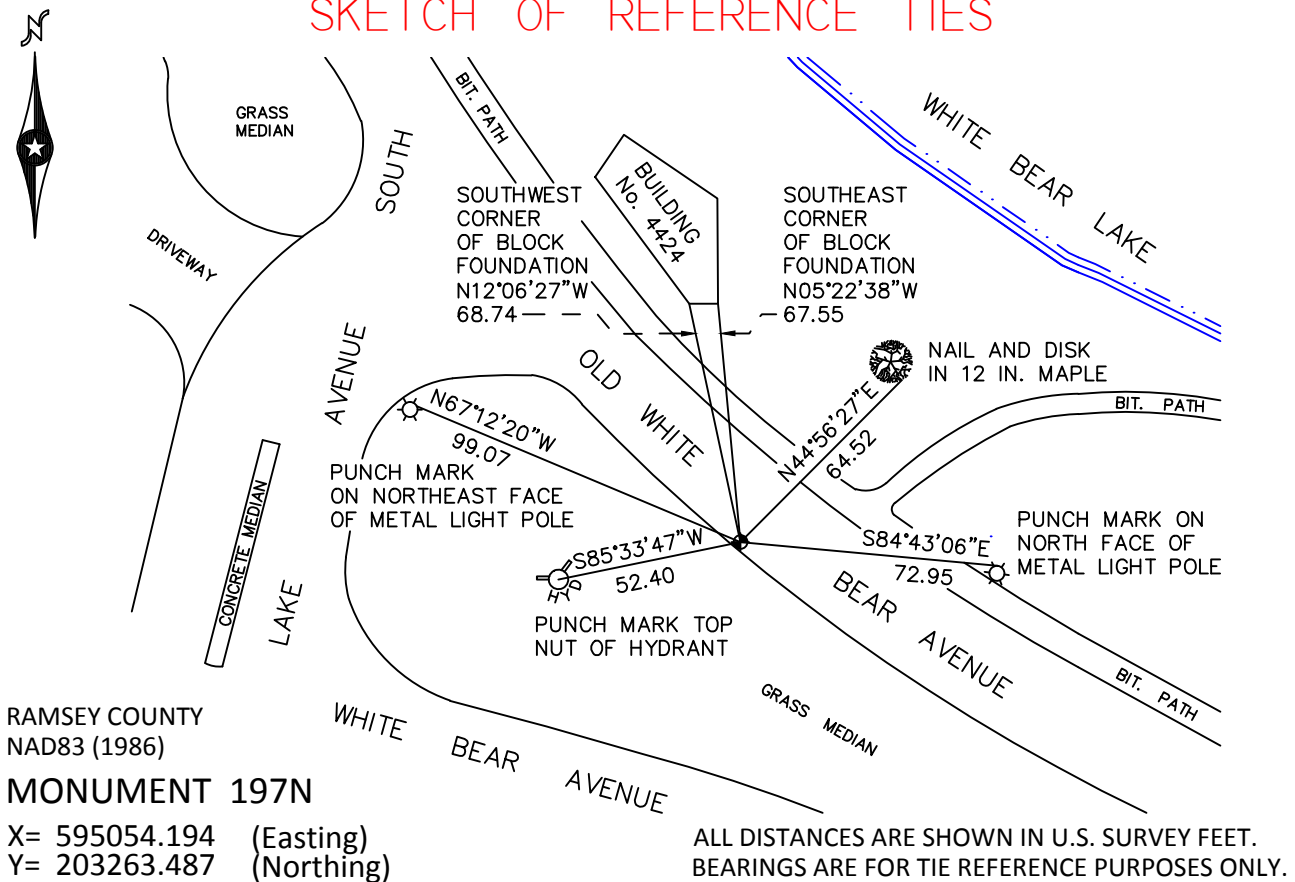
At the corner location shown on the sketch

On July 19, 2010 found a cast iron monument, within a cast iron manhole assembly.

left monument as found       raised/lowered monument       removed monument (explain)

On \_\_\_\_\_ placed a \_\_\_\_\_

### SKETCH OF REFERENCE TIES



Statements of evidence relative to this corner are on the following page.

I hereby certify that this document has been prepared by me or under my direct supervision this \_\_\_\_\_ day of \_\_\_\_\_, 20\_\_\_\_.

\_\_\_\_\_  
SIGNATURE

Minnesota License No. \_\_\_\_\_

- County Surveyor       Land Surveyor  
 Deputy County Surveyor

OFFICE OF COUNTY SURVEYOR  
County of Ramsey

I hereby certify that this document was filed in the County Surveyor's office this \_\_\_\_\_ day of \_\_\_\_\_, 20\_\_\_\_.

\_\_\_\_\_  
SIGNATURE  
Craig W. Hinzman, L.S.  
Ramsey County Surveyor

## MONUMENT 197N

Found a granite monument flush in concrete pavement, June 12, 1975.

Tied monument, March 22, 1976.

Monument down +/- 0.4 ft. and retied, January 17, 1991.

Retied monument, August 27, 1999.

Granite monument down 0.4 ft.; placed a cast iron manhole assembly around granite monument, July 27, 2005.

Tied monument, July 28, 2005.

Tied out monument for removal during road reconstruction, September 16, 2008.

Reset a 20 in. cast iron monument within a cast iron manhole assembly, October 29, 2008.

Tied monument, July 19, 2010.