

MONUMENT 196E

CERTIFICATE OF LOCATION OF GOVERNMENT CORNER

Witness Monument West of the Center of Section 23, Township 30 North, Range 22 West, County of Ramsey, State of Minnesota.

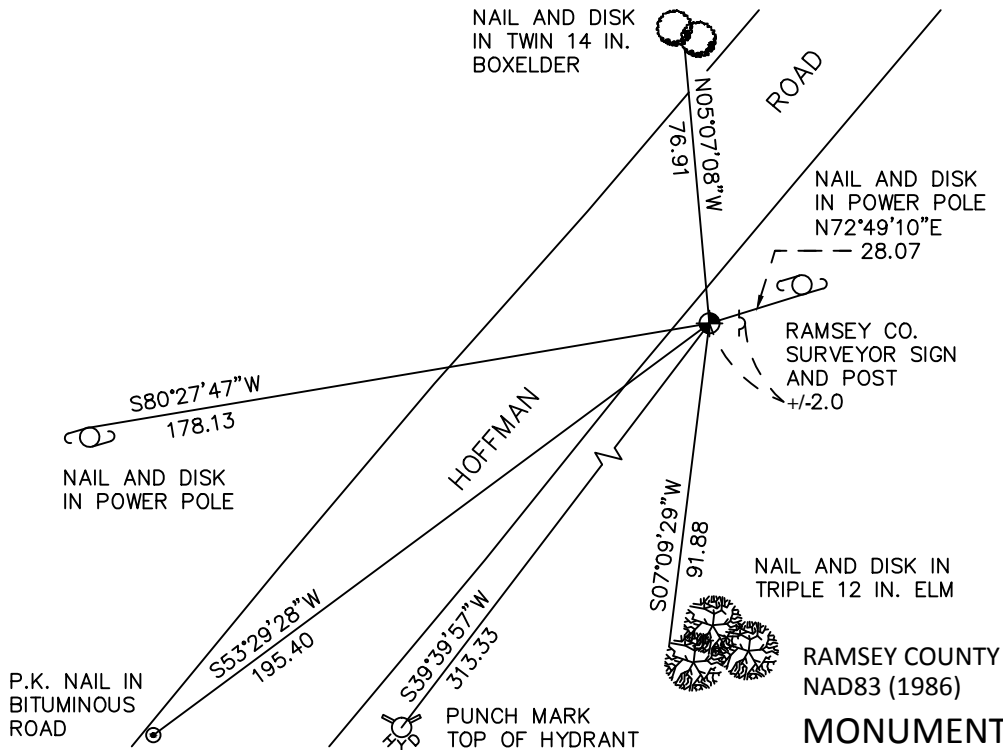
At the corner location shown on the sketch

On July 19, 2010 found a cast iron monument, down 0.3 feet.

left monument as found raised/lowered monument removed monument (explain)

On _____ placed a _____

SKETCH OF REFERENCE TIES



ALL DISTANCES ARE SHOWN IN U.S. SURVEY FEET.
BEARINGS ARE FOR TIE REFERENCE PURPOSES ONLY.

RAMSEY COUNTY
 NAD83 (1986)
MONUMENT 196E
 X= 593357.542 (Easting)
 Y= 202610.266 (Northing)

Statements of evidence relative to this corner are on the following page.

I hereby certify that this document has been prepared by me or under my direct supervision this _____ day of _____, 20____.

SIGNATURE

Minnesota License No. _____

- County Surveyor Land Surveyor
 Deputy County Surveyor

OFFICE OF COUNTY SURVEYOR
County of Ramsey

I hereby certify that this document was filed in the County Surveyor's office this _____ day of _____, 20____.

SIGNATURE

Craig W. Hinzman, L.S.
Ramsey County Surveyor

MONUMENT 196E

Found a granite monument, down 0.1 ft.; tied, July 19, 1974.

Replaced with a cast iron monument after Metro Sewer construction, November 7, 1977.

Placed a sign and post, February 7, 1991.

Tied monument, August 27, 1999.

Retied monument, March 28, 2005.

Retied monument, July 19, 2010.