

# MONUMENT 194

## CERTIFICATE OF LOCATION OF GOVERNMENT CORNER

East Quarter Corner of Section 21, Township 30 North, Range 22 West, County of Ramsey, State of Minnesota.

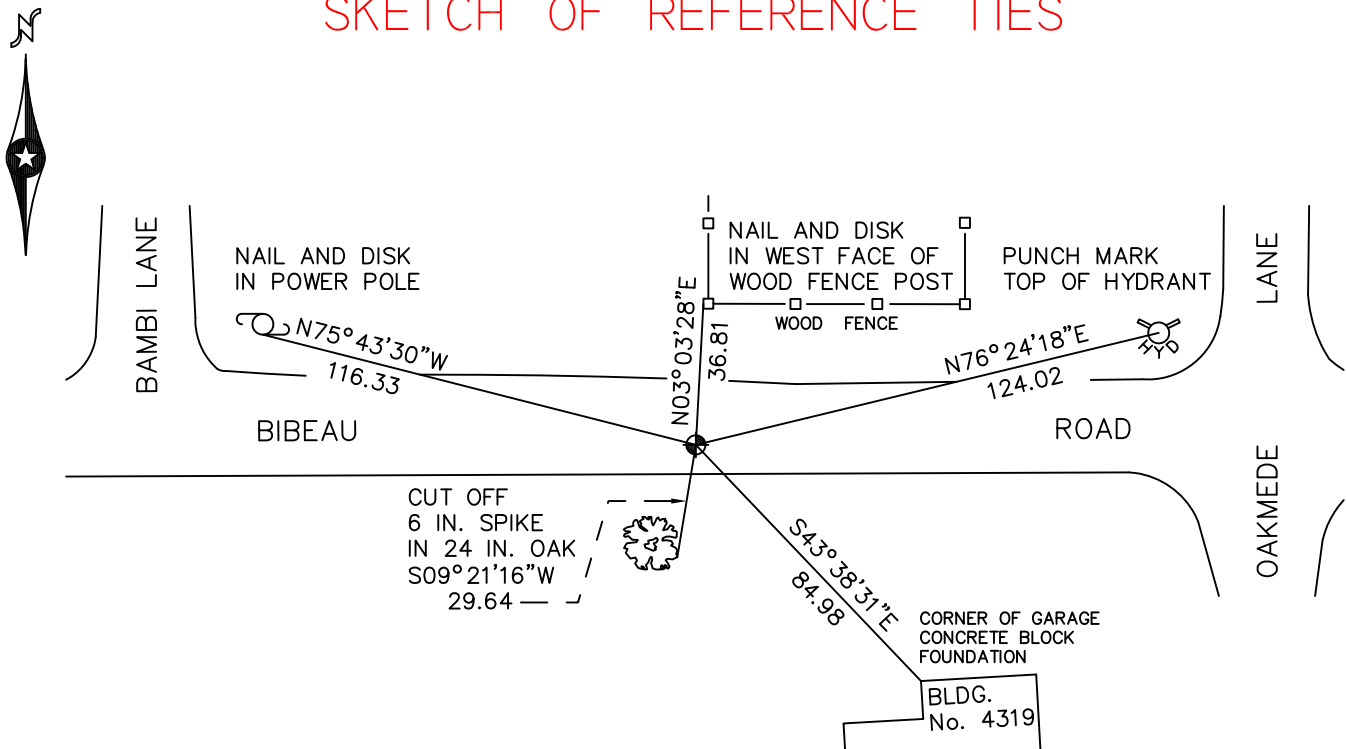
At the corner location shown on the sketch

On July 19, 2010 found a cast iron monument, flush.

left monument as found       raised/lowered monument       removed monument (explain)

On \_\_\_\_\_ placed a \_\_\_\_\_

### SKETCH OF REFERENCE TIES



RAMSEY COUNTY  
NAD83 (1986)

### MONUMENT 194

X= 587189.802 (Easting)  
Y= 202602.964 (Northing)

ALL DISTANCES ARE SHOWN IN U.S. SURVEY FEET.  
BEARINGS ARE FOR TIE REFERENCE PURPOSES ONLY.

Statements of evidence relative to this corner are on the following page.

I hereby certify that this document has been prepared by me or under my direct supervision this \_\_\_\_\_ day of \_\_\_\_\_, 20\_\_\_\_.

Minnesota License No. \_\_\_\_\_

- County Surveyor       Deputy County Surveyor       Land Surveyor

OFFICE OF COUNTY SURVEYOR  
County of Ramsey

I hereby certify that this document was filed in the County Surveyor's office this \_\_\_\_\_ day of \_\_\_\_\_, 20\_\_\_\_.

Michael D. Fiebiger, P.L.S.  
Ramsey County Surveyor

# MONUMENT 194

Found a granite monument in the center of dirt road, down 0.10 ft. and checked ties, May 29, 1974.

Monument tied before reconstruction of road; 20 in. cast iron monument set after reconstruction was completed, no date given in field book.

Found a cast iron monument flush and tied, January 21, 1992.

Retied monument, October 1, 1999.

Retied monument, March 28, 2005.

Retied monument, July 19, 2010.