

MONUMENT 193

CERTIFICATE OF LOCATION OF GOVERNMENT CORNER

Center of Section 21, Township 30 North, Range 22 West, County of Ramsey, State of Minnesota.

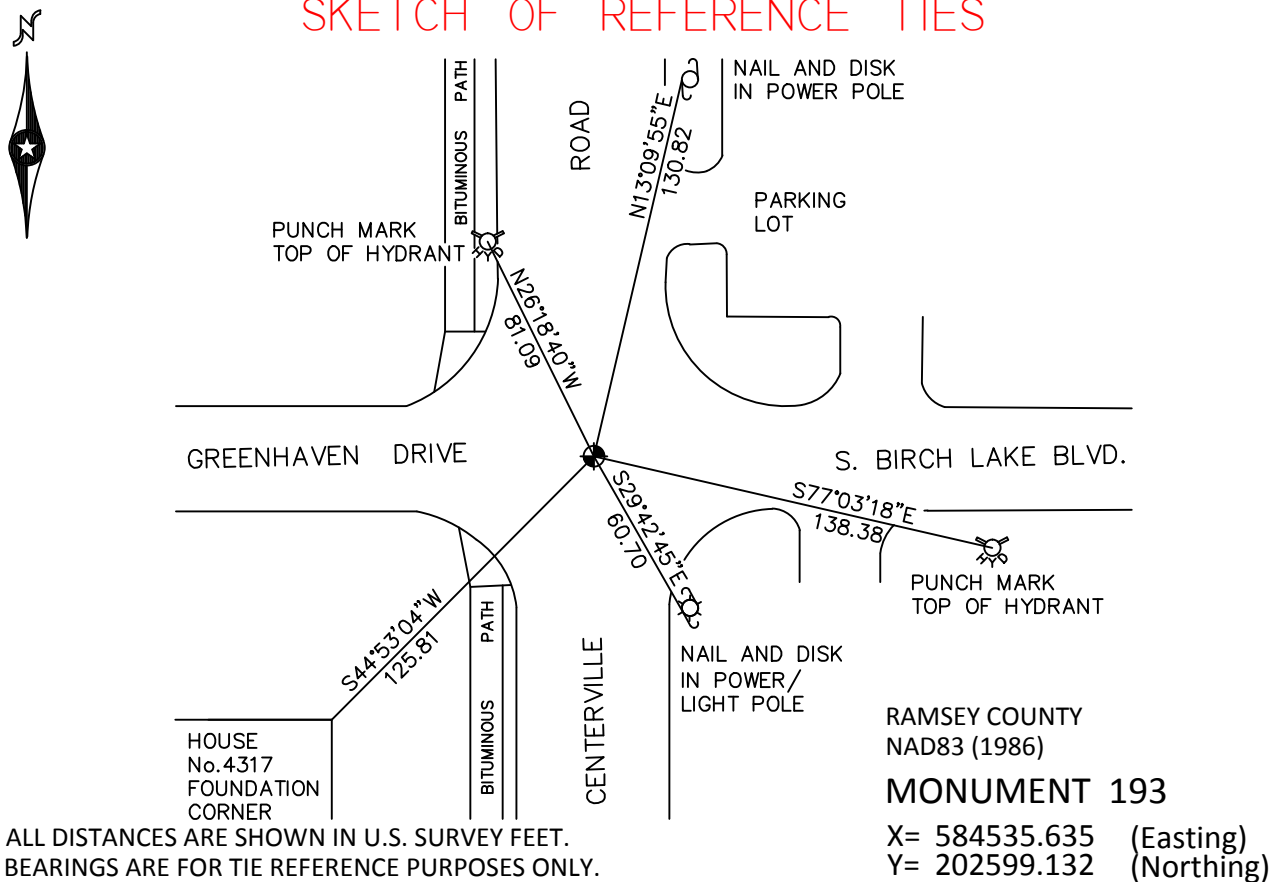
At the corner location shown on the sketch

On July 15, 2010 found a cast iron monument, within a cast iron manhole assembly.

left monument as found raised/lowered monument removed monument (explain)

On _____ placed a _____

SKETCH OF REFERENCE TIES



Statements of evidence relative to this corner are on the following page.

I hereby certify that this document has been prepared by me or under my direct supervision this _____ day of _____, 20____.

SIGNATURE
 Minnesota License No. _____
 County Surveyor Land Surveyor
 Deputy County Surveyor

OFFICE OF COUNTY SURVEYOR
 County of Ramsey

I hereby certify that this document was filed in the County Surveyor's office this _____ day of _____, 20____.

SIGNATURE
Craig W. Hinzman, L.S.
 Ramsey County Surveyor

MONUMENT 193

Found a granite monument down 0.3 ft.; placed a cast iron cap over the top, June 12, 1974.

Tied monument, June 24, 1974.

Granite monument fractured. Broke off more of the granite monument to place a cast iron cap, June 26, 1987.

Monument flush; tied, January 21, 1992.

Retied monument, October 2, 1998.

Tied monument for removal by construction project, June 14, 2001.

Relocated position and set a 20 in. cast iron monument 18 in. below surface. Contractor to set a cast iron manhole assembly, October 21, 2002.

Tied monument, March 23, 2005.

Retied monument, July 15, 2010.