

MONUMENT 192

CERTIFICATE OF LOCATION OF GOVERNMENT CORNER

East Quarter Corner of Section 20, Township 30 North, Range 22 West, County of Ramsey, State of Minnesota.

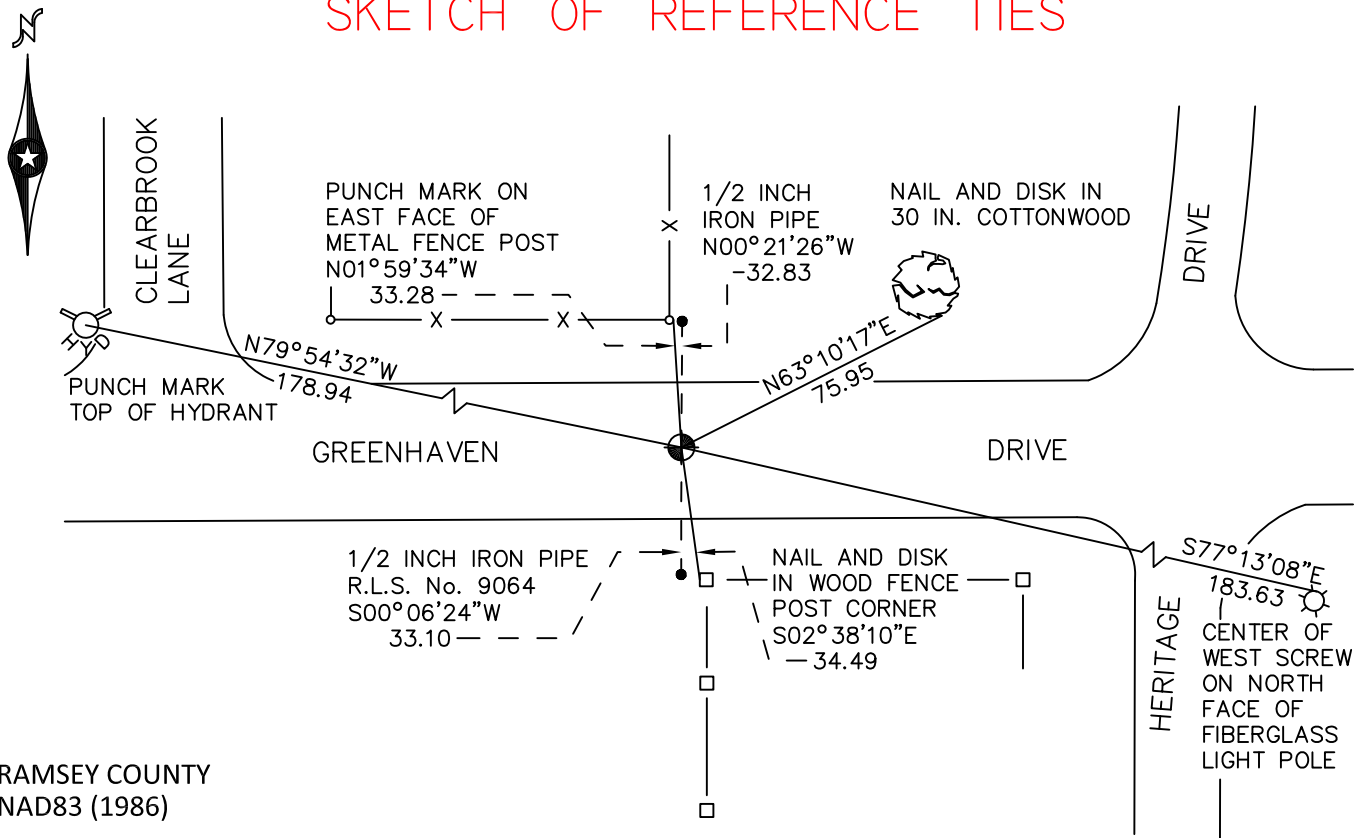
At the corner location shown on the sketch

On September 24, 2010 found a cast iron monument, down 0.03 feet.

left monument as found raised/lowered monument removed monument (explain)

On _____ placed a _____

SKETCH OF REFERENCE TIES



RAMSEY COUNTY
NAD83 (1986)

MONUMENT 192

X= 581907.721 (Easting)
Y= 202594.074 (Northing)

ALL DISTANCES ARE SHOWN IN U.S. SURVEY FEET.
BEARINGS ARE FOR TIE REFERENCE PURPOSES ONLY.

Statements of evidence relative to this corner are on the following page.

I hereby certify that this document has been prepared by me or under my direct supervision this _____ day of _____, 20____.

Minnesota License No. _____

- County Surveyor Deputy County Surveyor Land Surveyor

OFFICE OF COUNTY SURVEYOR
County of Ramsey

I hereby certify that this document was filed in the County Surveyor's office this _____ day of _____, 20____.

Michael D. Fiebiger, P.L.S.
Ramsey County Surveyor

MONUMENT 192

Found a cast iron monument, down +/-2 in., June 24, 1977.

Monument destroyed by construction in 1979.

Placed a 20 in. cast iron monument, April 17, 1981.

Visited monument, July 24, 1990.

Found a cast iron monument broken off, down +/-0.4 ft.; four P.K. nails were around; placed a short cast iron monument, verified correct position using record angle and distances from traverse work (sheet is in section folder), tied, July 25, 1990.

Retied monument, June 25, 1998.

Retied monument, March 23, 2005.

Monument missing; set a P.K. nail using record angles and distances from traverse work, August 5, 2010.

Found a broken cast iron monument, down 18 in.; replaced P.K. nail with a 20 in. cast iron monument set in concrete and tied, September 24, 2010.