

# MONUMENT 179E

## CERTIFICATE OF LOCATION OF GOVERNMENT CORNER

Monument on the East-West Quarter Line, East of the Center of Section 20,  
Township 30 North, Range 23 West, County of Ramsey, State of Minnesota.

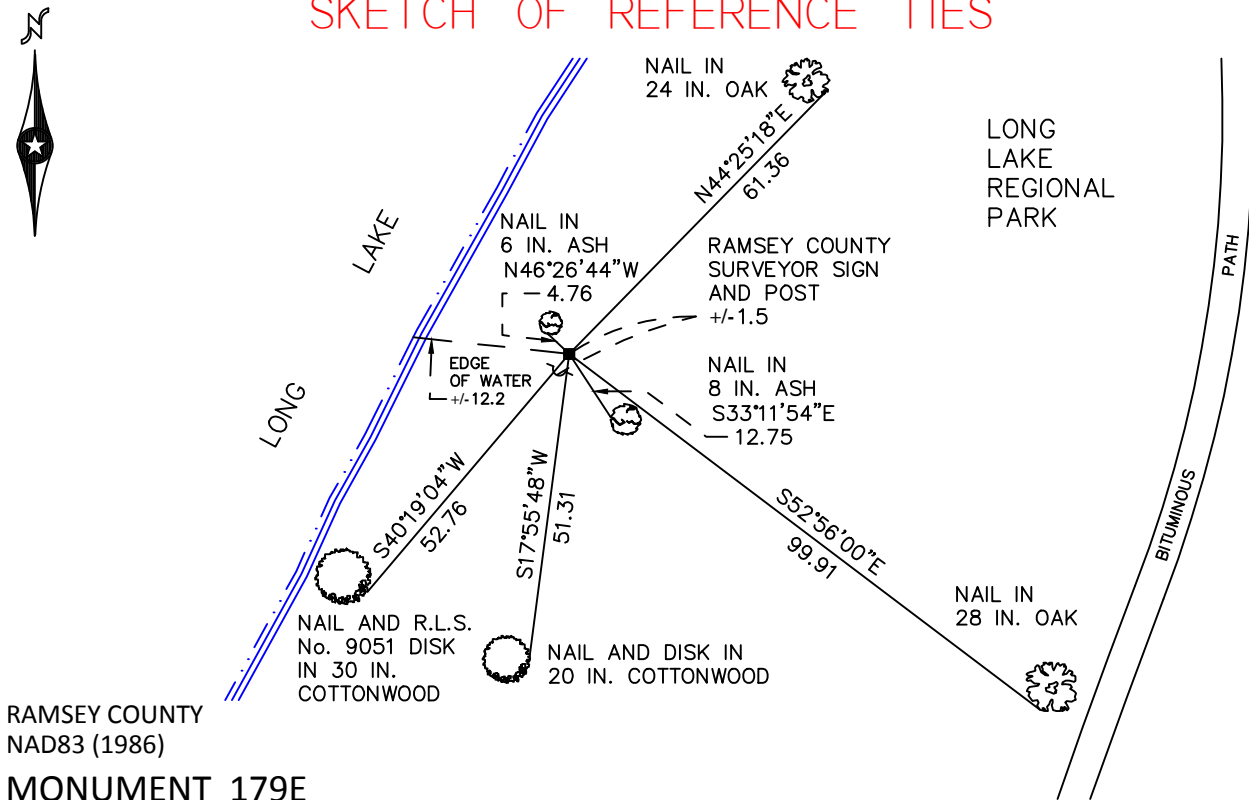
At the corner location shown on the sketch

On October 8, 2010 found a granite monument, flush.

left monument as found       raised/lowered monument       removed monument (explain)

On \_\_\_\_\_ placed a \_\_\_\_\_

### SKETCH OF REFERENCE TIES



RAMSEY COUNTY  
NAD83 (1986)

### MONUMENT 179E

X= 548019.664 (Easting)  
Y= 202411.816 (Northing)

ALL DISTANCES ARE SHOWN IN U.S. SURVEY FEET.  
BEARINGS ARE FOR TIE REFERENCE PURPOSES ONLY.

Statements of evidence relative to this corner are on the following page.

I hereby certify that this document has been prepared by me or under my direct supervision this \_\_\_\_\_ day of \_\_\_\_\_, 20\_\_\_\_.

\_\_\_\_\_  
SIGNATURE

Minnesota License No. \_\_\_\_\_

- County Surveyor       Land Surveyor  
 Deputy County Surveyor

OFFICE OF COUNTY SURVEYOR  
County of Ramsey

I hereby certify that this document was filed in the County Surveyor's office this \_\_\_\_\_ day of \_\_\_\_\_, 20\_\_\_\_.

\_\_\_\_\_  
SIGNATURE  
Craig W. Hinzman, L.S.  
Ramsey County Surveyor

## MONUMENT 179E

Found a granite monument flush with ground and tied, March 31, 1983.

Placed a sign and post +/-1 ft. south of monument, July 13, 1992.

Found a granite monument with no post; set a sign and post, retied, April 4, 2001.

Retied monument, March 21, 2005.

Retied monument, October 8, 2010.