

MONUMENT 172

CERTIFICATE OF LOCATION OF GOVERNMENT CORNER

South Quarter Corner of Section 14, Township 30 North, Range 22 West, County of Ramsey, State of Minnesota.

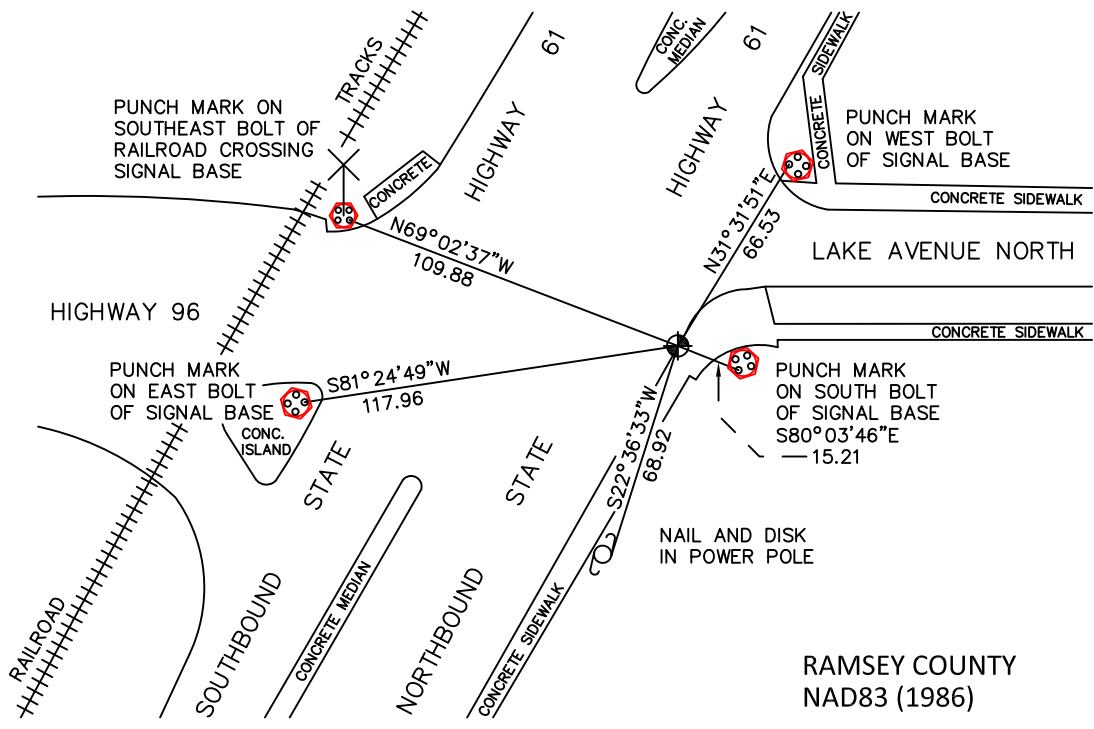
At the corner location shown on the sketch

On August 4, 2010 found a cast iron monument, flush.

left monument as found raised/lowered monument removed monument (explain)

On _____ placed a _____

SKETCH OF REFERENCE TIES



RAMSEY COUNTY
NAD83 (1986)

MONUMENT 172

ALL DISTANCES ARE SHOWN IN U.S. SURVEY FEET.
BEARINGS ARE FOR TIE REFERENCE PURPOSES ONLY.

X= 595045.351 (Easting)
Y= 205256.456 (Northing)

Statements of evidence relative to this corner are on the following page.

I hereby certify that this document has been prepared by me or under my direct supervision this _____ day of _____, 20____.

MINNESOTA LICENSE NO. _____
SIGNATURE

- County Surveyor Deputy County Surveyor Land Surveyor

OFFICE OF COUNTY SURVEYOR
County of Ramsey

I hereby certify that this document was filed in the County Surveyor's office this _____ day of _____, 20____.

Michael D. Fiebiger, P.L.S.
Ramsey County Surveyor
SIGNATURE

MONUMENT 172

Found nothing. Placed a cast iron monument as per Survey Book No.1, pages 56 and 57. Obtained ties from State Highway Department, which checked, June 24, 1975.

Tied monument, June 15, 1990.

Retied monument, September 28, 1999.

Concrete added around monument, May 24, 2000.

Retied monument, December 14, 2004.

Monument tied out for removal during sewer/water and sidewalk re-construction, June 28, 2007.

Reset a short (4 5/8 in.) cast iron monument, flush in the concrete curbing gutter, September 28, 2007.

Tied monument, August 4, 2010.