

MONUMENT 171

CERTIFICATE OF LOCATION OF GOVERNMENT CORNER

Southwest Corner of Section 14, Township 30 North, Range 22 West, County of Ramsey, State of Minnesota.

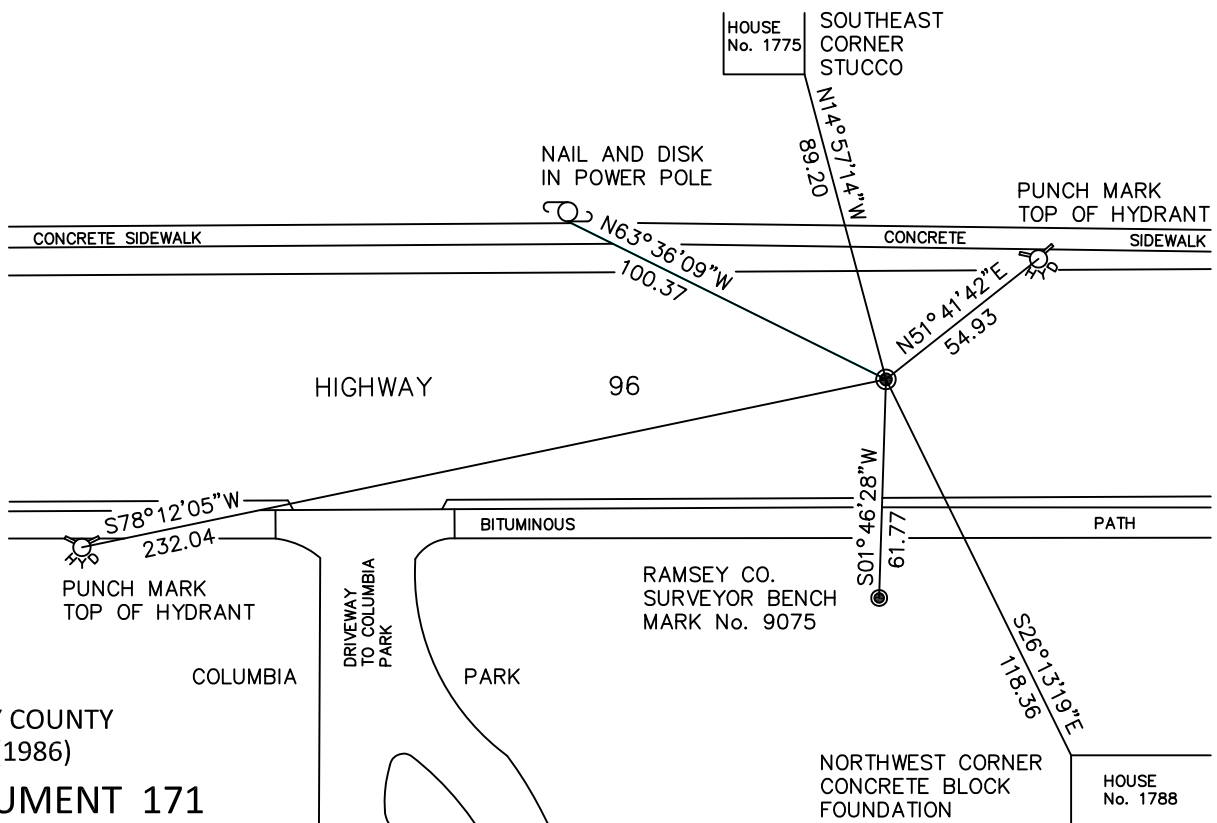
At the corner location shown on the sketch

On August 4, 2010 found a 3 1/8 inch brass disk monument, flush.

left monument as found raised/lowered monument removed monument (explain)

On _____ placed a _____

SKETCH OF REFERENCE TIES



RAMSEY COUNTY
NAD83 (1986)

MONUMENT 171

X= 592408.829 (Easting)
Y= 205257.640 (Northing)

ALL DISTANCES ARE SHOWN IN U.S. SURVEY FEET.
BEARINGS ARE FOR TIE REFERENCE PURPOSES ONLY.

Statements of evidence relative to this corner are on the following page.

I hereby certify that this document has been prepared by me or under my direct supervision this _____ day of _____, 20____.

MINNESOTA LICENSE NO. _____ SIGNATURE

- County Surveyor
 Deputy County Surveyor Land Surveyor

OFFICE OF COUNTY SURVEYOR
County of Ramsey

I hereby certify that this document was filed in the County Surveyor's office this _____ day of _____, 20____.

MICHAEL D. FIEBIGER, P.L.S.
RAMSEY COUNTY SURVEYOR SIGNATURE

MONUMENT 171

Found a cast iron monument, May, 1975.

Removed monument for reconstruction, April 9, 1996.

Reset location, placed 2 1/2 in. brass disk, July 30, 1996.

Tied monument, September 24, 1999.

Retied monument, December 14, 2004.

Retied monument, August 4, 2010.