

# MONUMENT 170

## CERTIFICATE OF LOCATION OF GOVERNMENT CORNER

North Quarter Corner of Section 22, Township 30 North, Range 22 West, County of Ramsey, State of Minnesota.

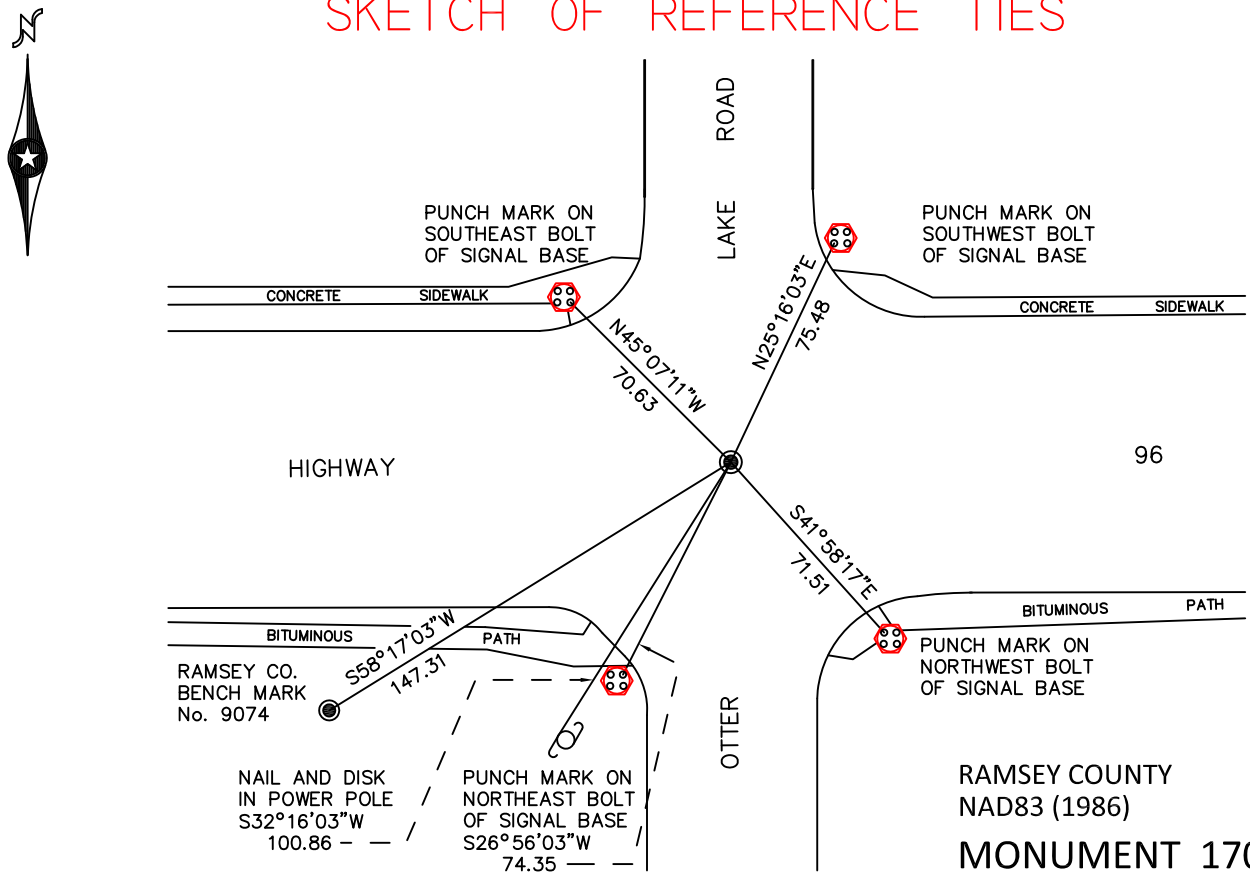
At the corner location shown on the sketch

On August 3, 2010 found a 3 1/8 in. brass disk monument, flush.

left monument as found       raised/lowered monument       removed monument (explain)

On \_\_\_\_\_ placed a \_\_\_\_\_

### SKETCH OF REFERENCE TIES



ALL DISTANCES ARE SHOWN IN U.S. SURVEY FEET.  
BEARINGS ARE FOR TIE REFERENCE PURPOSES ONLY.

RAMSEY COUNTY  
NAD83 (1986)  
**MONUMENT 170**

X= 589792.517 (Easting)  
Y= 205239.902 (Northing)

Statements of evidence relative to this corner are on the following page.

I hereby certify that this document has been prepared by me or under my direct supervision this \_\_\_\_\_ day of \_\_\_\_\_, 20\_\_\_\_.

\_\_\_\_\_  
MINNESOTA LICENSE NO. \_\_\_\_\_  
SIGNATURE

- County Surveyor       Deputy County Surveyor       Land Surveyor

OFFICE OF COUNTY SURVEYOR  
County of Ramsey

I hereby certify that this document was filed in the County Surveyor's office this \_\_\_\_\_ day of \_\_\_\_\_, 20\_\_\_\_.

\_\_\_\_\_  
MICHAEL D. FIEBIGER, P.L.S.  
RAMSEY COUNTY SURVEYOR  
SIGNATURE

## MONUMENT 170

Found a 0.5 in. diameter, +/-6 in. long pipe, down 3.5 in.; found a granite monument down 11 in., May 8, 1975.

Set a cast iron monument, +/-1979.

Tied monument, down +/-0.1 ft., June 14, 1990.

Removed for re-construction, no date given in field book.

Set a 2.5 in. brass disk, July 25, 1996.

Found disk to be incorrect; removed and set a new disk, October 28, 1996.

Tied monument, September 24, 1999.

Retied monument, December 16, 2004.

Retied monument, August 3, 2010.