

MONUMENT 167

CERTIFICATE OF LOCATION OF GOVERNMENT CORNER

Southeast Corner of Section 17, Township 30 North, Range 22 West, County of Ramsey, State of Minnesota.

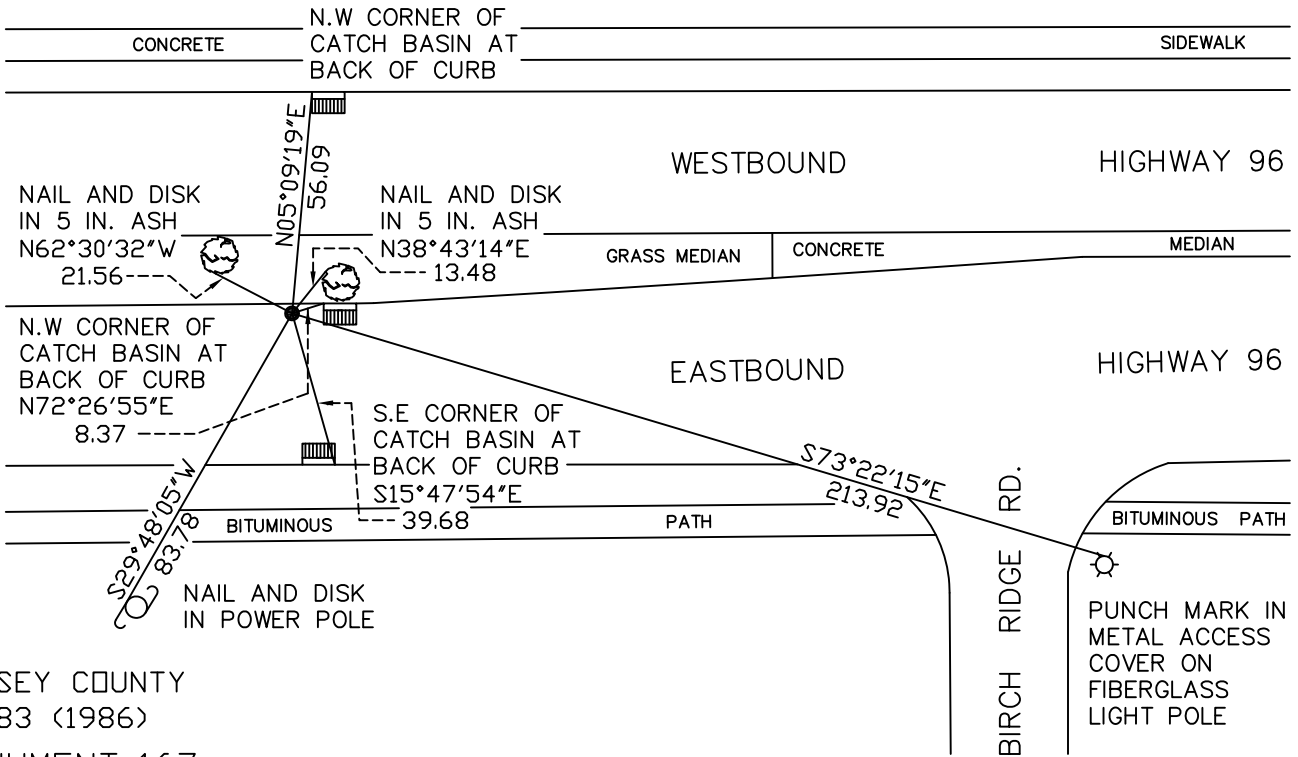
At the corner location shown on the sketch

On September 17, 2010 found a 3/4 inch brass plug, flush.

left monument as found lowered monument removed monument (explain)

On _____ placed a _____

SKETCH OF REFERENCE TIES



RAMSEY COUNTY
NAD83 (1986)
MONUMENT 167

X = 581882.213 (Easting)
Y = 205223.130 (Northing)

ALL DISTANCES ARE SHOWN IN U.S. SURVEY FEET.
BEARINGS ARE FOR TIE REFERENCE PURPOSES ONLY.

Statements of evidence relative to this corner are on the following page(s).

I hereby certify that this document and the data contained herein was prepared by me or under my direct supervision this _____ day of _____, 20____.

SIGNATURE

Minnesota License No. _____

County Surveyor
 Deputy County Surveyor Land Surveyor

OFFICE OF COUNTY SURVEYOR
County of Ramsey

I hereby certify that this document was filed in the County Surveyor's office on the _____ day of _____, 20____.

SIGNATURE

Michael D. Fiebiger, P.L.S.
Ramsey County Surveyor

MONUMENT 167

Found a granite monument, down +/-6 in., 1977.

Short cast iron monument placed, 1979.

Tied cast iron monument, down 0.15 ft., May 7, 1990.

Found a cast iron monument, down 0.2 ft., September 13, 1995.

Removed a 4 5/8 in. cast iron monument; left granite monument, April 28, 2000.

Relocated position, lands in joint between gutter and concrete pavement, April 27, 2001.

Set a 3/4 in. by 3 in. brass plug, July 16, 2001.

Tied monument, July 19, 2001.

Retied monument, September 17, 2010.