

MONUMENT 166

CERTIFICATE OF LOCATION OF GOVERNMENT CORNER

South Quarter Corner of Section 17, Township 30 North, Range 22 West, County of Ramsey, State of Minnesota.

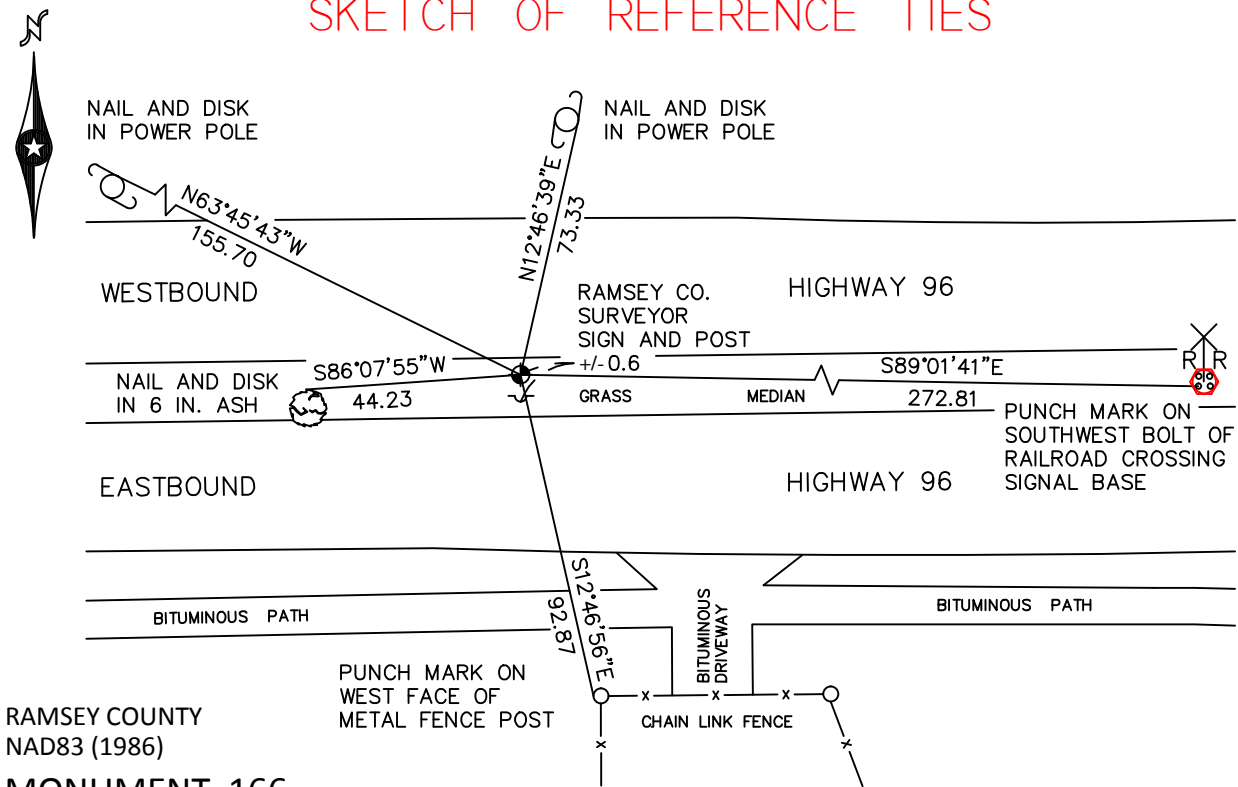
At the corner location shown on the sketch

On August 3, 2010 found a cast iron monument, down 0.2 feet.

left monument as found raised/lowered monument removed monument (explain)

On _____ placed a _____

SKETCH OF REFERENCE TIES



RAMSEY COUNTY
NAD83 (1986)

MONUMENT 166

X= 579242.739 (Easting)
Y= 205220.701 (Northing)

ALL DISTANCES ARE SHOWN IN U.S. SURVEY FEET.
BEARINGS ARE FOR TIE REFERENCE PURPOSES ONLY.

Statements of evidence relative to this corner are on the following page.

I hereby certify that this document has been prepared by me or under my direct supervision this _____ day of _____, 20____.

SIGNATURE

Minnesota License No. _____

- County Surveyor Land Surveyor
 Deputy County Surveyor

OFFICE OF COUNTY SURVEYOR
County of Ramsey

I hereby certify that this document was filed in the County Surveyor's office this _____ day of _____, 20____.

SIGNATURE

Craig W. Hinzman, L.S.
Ramsey County Surveyor

MONUMENT 166

Found a granite monument down +/-5 in.; set a cast iron cap and bolt monument in concrete, 1979.

Tied out cast iron monument in concrete, May 7, 1990.

Set a 20 in. cast iron monument in median; set a sign and post 0.8 ft. south of monument, September 22, 1998.

Tied monument, December 4, 1998.

Retied monument, December 14, 2004.

Retied monument, August 3, 2010.