

# MONUMENT 165

## CERTIFICATE OF LOCATION OF GOVERNMENT CORNER

Northeast Corner of Section 19, Township 30 North, Range 22 West, County of Ramsey, State of Minnesota.

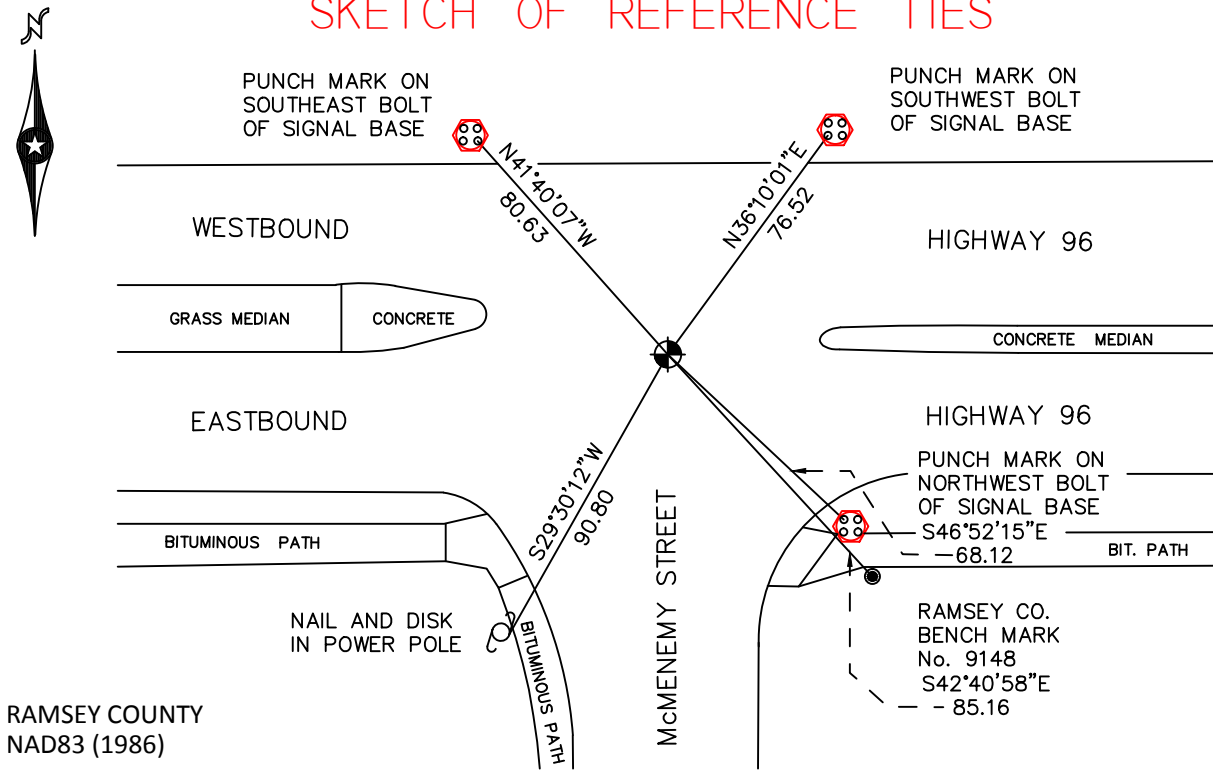
At the corner location shown on the sketch

On August 3, 2010 found a cast iron monument, within a cast iron manhole assembly.

left monument as found       raised/lowered monument       removed monument (explain)

On \_\_\_\_\_ placed a \_\_\_\_\_

### SKETCH OF REFERENCE TIES



RAMSEY COUNTY  
NAD83 (1986)

### MONUMENT 165

X= 576613.854 (Easting)  
Y= 205187.022 (Northing)

ALL DISTANCES ARE SHOWN IN U.S. SURVEY FEET.  
BEARINGS ARE FOR TIE REFERENCE PURPOSES ONLY.

Statements of evidence relative to this corner are on the following page.

I hereby certify that this document has been prepared by me or under my direct supervision this \_\_\_\_\_ day of \_\_\_\_\_, 20\_\_\_\_.

\_\_\_\_\_  
MINNESOTA LICENSE NO. \_\_\_\_\_ SIGNATURE

- County Surveyor  
 Deputy County Surveyor       Land Surveyor

OFFICE OF COUNTY SURVEYOR  
County of Ramsey

I hereby certify that this document was filed in the County Surveyor's office this \_\_\_\_\_ day of \_\_\_\_\_, 20\_\_\_\_.

\_\_\_\_\_  
SIGNATURE  
Craig W. Hinzman, L.S.  
Ramsey County Surveyor

## MONUMENT 165

Found a granite monument down +/-4 in.; set a short cast iron monument (4 5/8 in.) on top, May 26, 1976.

Tied monument, June 14, 1990.

Tied and removed monument for construction, May 16, 1997.

Set a 20 in. cast iron monument down 18 in. from finished grade, August 26, 1998.

Manhole assembly set by contractor, August 31, 1998.

Tied monument, December 4, 1998.

Retied monument, February 15, 2005.

Retied monument, August 3, 2010.