

# MONUMENT 15SC

## CERTIFICATE OF LOCATION OF GOVERNMENT CORNER

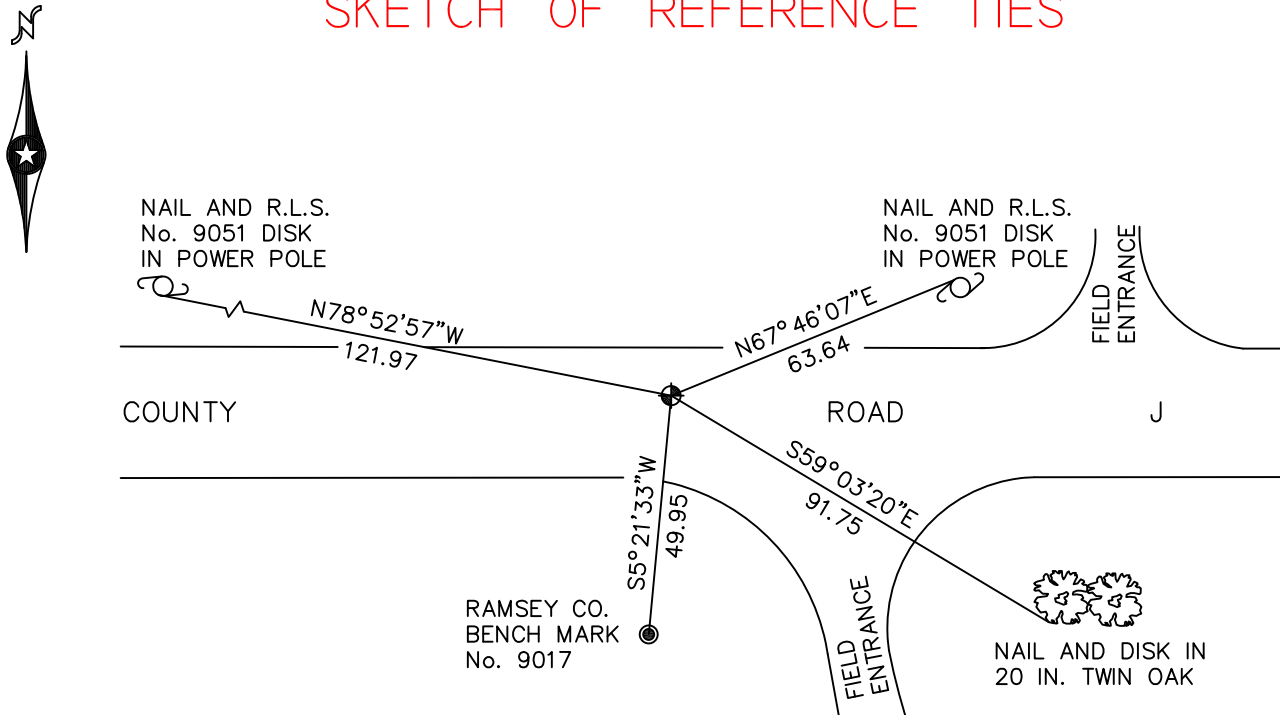
Northeast Corner of Section 6, Township 30 North, Range 22 West, County of Ramsey, State of Minnesota.

At the corner location shown on the sketch

On July 13, 2010 found a cast iron monument, marked "3RD CORRECTION LINE"  
(2637.98 feet east of monument 14SC), down 0.05 feet.  
 left monument as found       raised/lowered monument       removed monument (explain)

On \_\_\_\_\_ placed a \_\_\_\_\_

### SKETCH OF REFERENCE TIES



RAMSEY COUNTY  
NAD83 (1986)

### MONUMENT 15SC

X= 576530.069 (Easting)  
 Y= 221539.599 (Northing)  
 "CLOSING CORNER" IS 4.17 FT. SOUTH.

ALL DISTANCES ARE SHOWN IN U.S. SURVEY FEET.  
 BEARINGS ARE FOR TIE REFERENCE PURPOSES ONLY.

Statements of evidence relative to this corner are on the following page.

I hereby certify that this document has been prepared by me or under my direct supervision this \_\_\_\_\_ day of \_\_\_\_\_, 20\_\_\_\_.

Minnesota License No. \_\_\_\_\_

- County Surveyor       Land Surveyor  
 Deputy County Surveyor

OFFICE OF COUNTY SURVEYOR  
 County of Ramsey

I hereby certify that this document was filed in the County Surveyor's office this \_\_\_\_\_ day of \_\_\_\_\_, 20\_\_\_\_.

Michael D. Fiebiger, P.L.S.  
 Ramsey County Surveyor

## MONUMENT 15SC

Found a granite monument tipped, down 0.3 ft, also found 2 P.K. nails and a nail and disk, none of them located over tipped granite (all were east of the tipped granite monument), did not tie out. Dug out granite and uprighted, but monument did not fit ties. Uprighting the granite monument moved the top of the monument to the east, May 15 and 16, 1974.

Placed a cast iron cap, July 25, 1975.

Tied monument, March 22, 1976.

Tied monument for road construction, April, 1990.

Removed a cast iron cap, May, 1990.

Placed a 20 in. cast iron monument, September 5, 1990.

Retied monument, January 27, 1993.

Set a 20 in. cast iron monument marked, "3RD CORRECTION LINE", 4.19 ft. north of "Closing Corner" (original granite monument location), July 27, 1995.

Tied monument 15SC, September 25, 1998.

Retied monument, October 11, 2005.

Retied monument, July 13, 2010.