

MONUMENT 157

CERTIFICATE OF LOCATION OF GOVERNMENT CORNER

Northwest Corner of Section 22, Township 30 North, Range 23 West, County of Ramsey, State of Minnesota.

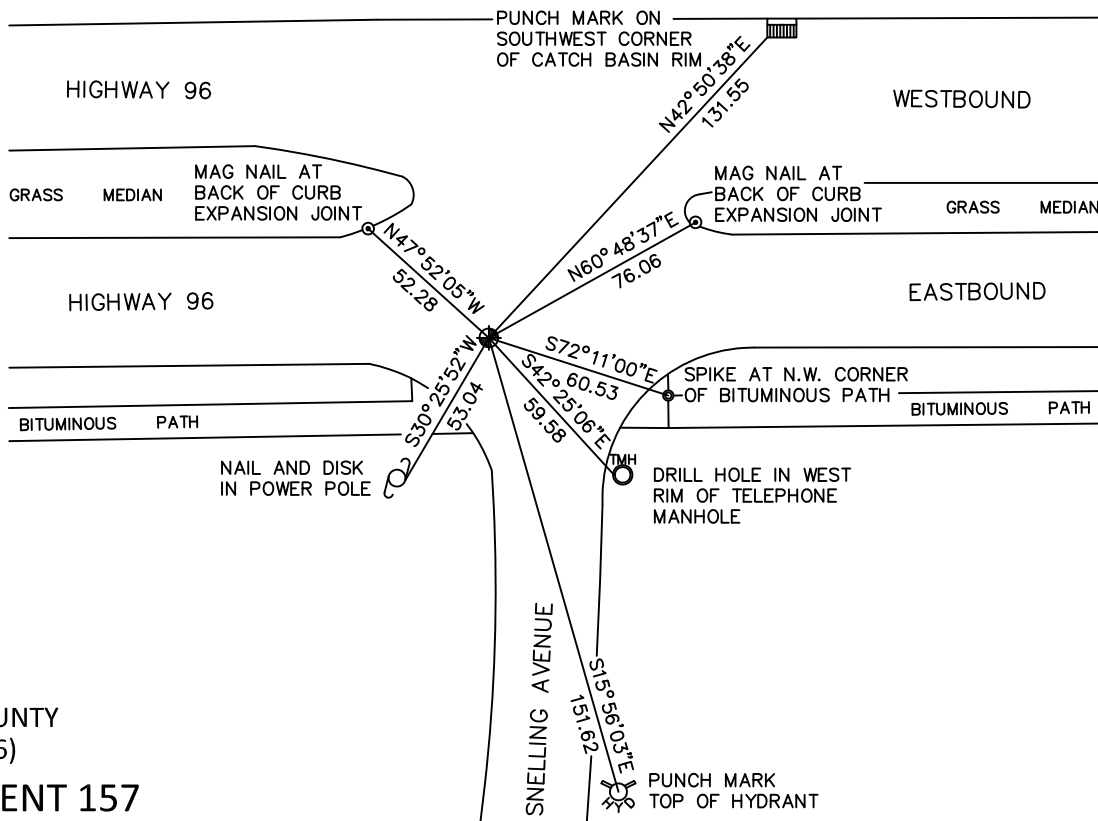
At the corner location shown on the sketch

On July 29, 2010 found a cast iron monument, within a cast iron manhole assembly.

left monument as found raised/lowered monument removed monument (explain)

On _____ placed a _____

SKETCH OF REFERENCE TIES



RAMSEY COUNTY
NAD83 (1986)

MONUMENT 157

X= 555672.627 (Easting)
Y= 205085.678 (Northing)

ALL DISTANCES ARE SHOWN IN U.S. SURVEY FEET.
BEARINGS ARE FOR TIE REFERENCE PURPOSES ONLY.

Statements of evidence relative to this corner are on the following page.

I hereby certify that this document has been prepared by me or under my direct supervision this _____ day of _____, 20____.

SIGNATURE

Minnesota License No. _____

- County Surveyor Deputy County Surveyor Land Surveyor

OFFICE OF COUNTY SURVEYOR
County of Ramsey

I hereby certify that this document was filed in the County Surveyor's office this _____ day of _____, 20____.

SIGNATURE

Michael D. Fiebiger, P.L.S.
Ramsey County Surveyor

MONUMENT 157

Found a lag bolt on surface; granite monument down 0.35 ft.; placed P.K. nails 2 ft. away in each quadrant, May 31, 1974.

Placed a cast iron cap and bolt monument over granite, June 13, 1974.

Tied monument, June 20, 1974.

Monument had been disturbed. Dug down to granite, appeared to be leaning, November 5, 1986.

Placed a short cast iron monument (4 in. long Harrison) in relocated position and cemented in place, June 9, 1988.

Tied monument, January 14, 1992.

Monument removed for construction, no date given in field book.

Set a 20 in. cast iron monument down 18 in. from finished grade; 12 in. cast iron manhole assembly set by contractor, October 3, 2003.

Tied monument, February 15, 2005.

Retied monument, July 29, 2010.