

# MONUMENT 155

## CERTIFICATE OF LOCATION OF GOVERNMENT CORNER

Northeast Corner of Section 20, Township 30 North, Range 23 West, County of Ramsey, State of Minnesota.

At the corner location shown on the sketch

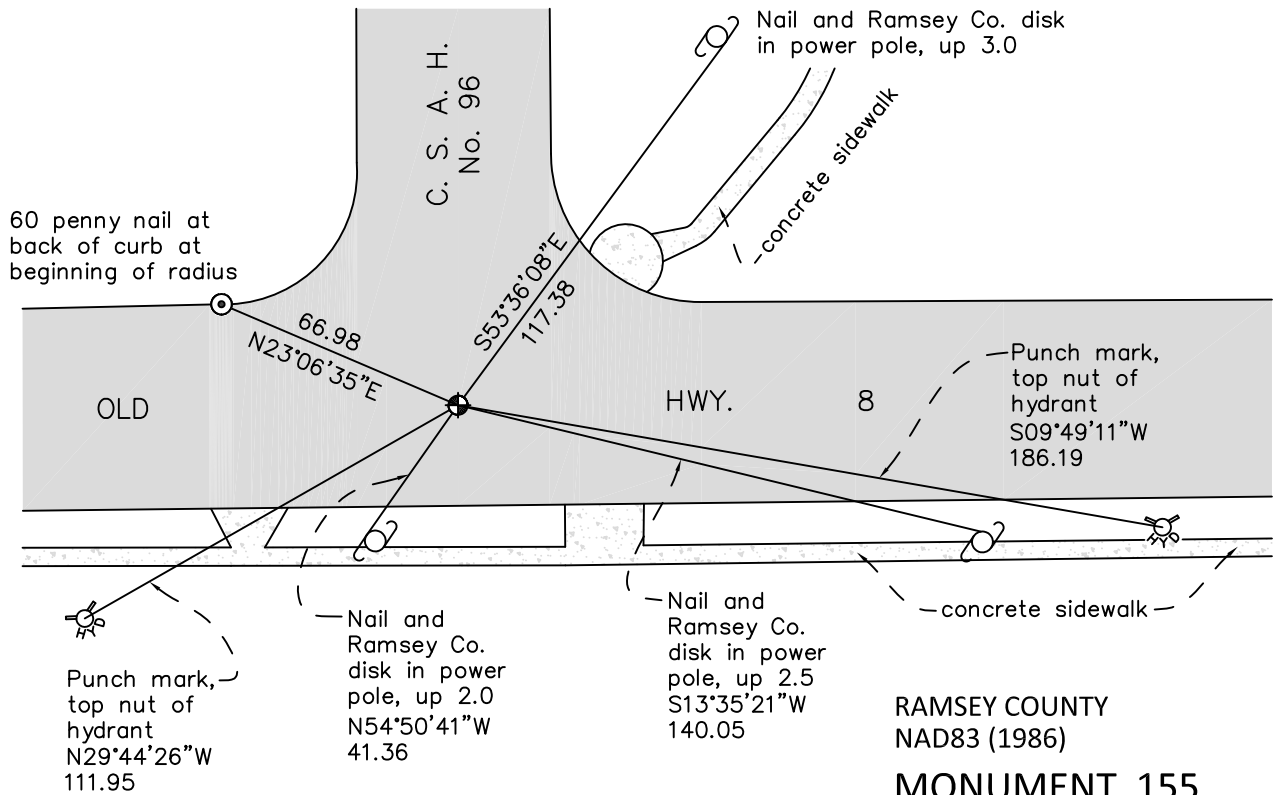
On July 19, 2010 found a cast iron monument, within a cast iron manhole assembly.

left monument as found       raised/lowered monument       removed monument (explain)

On \_\_\_\_\_ placed a \_\_\_\_\_



### SKETCH OF REFERENCE TIES



ALL DISTANCES ARE SHOWN IN U.S. SURVEY FEET.  
BEARINGS ARE FOR TIE REFERENCE PURPOSES ONLY.

Drafted by: DDB      X= 550405.736 (Easting)  
Y= 205052.135 (Northing)

Statements of evidence relative to this corner are on the following page.

I hereby certify that this document was prepared by me or under my direct supervision and that I am a duly Licensed Land Surveyor under the laws of the State of Minnesota.

\_\_\_\_\_  
Daniel D. Baar      Date  
Minnesota License No. 45816

County Surveyor       Land Surveyor  
 Deputy County Surveyor

OFFICE OF COUNTY SURVEYOR  
County of Ramsey

I hereby certify that this document was filed in the County Surveyor's office this \_\_\_\_\_ day of \_\_\_\_\_, 20 \_\_\_\_.

\_\_\_\_\_  
Craig W. Hinzman, L.S.  
Ramsey County Surveyor

# MONUMENT 155

Found granite monument down 0.16 ft., August 21, 1974.

Set cast iron cap monument, May 17, 1976.

20 in. cast iron monument set after reconstruction of road by County Highway Department.

Tied monument, June 13, 1990.

Retied monument; top missing, July 13, 1998.

Removed cast iron monument; set 20 in. cast iron monument within a cast iron manhole assembly, July 21, 1998.

Retied monument, February 15, 2005.

Retied monument, July 19, 2010.