

MONUMENT 151

CERTIFICATE OF LOCATION OF GOVERNMENT CORNER

Southwest Corner of Section 18, Township 30 North, Range 23 West, County of Ramsey, State of Minnesota.

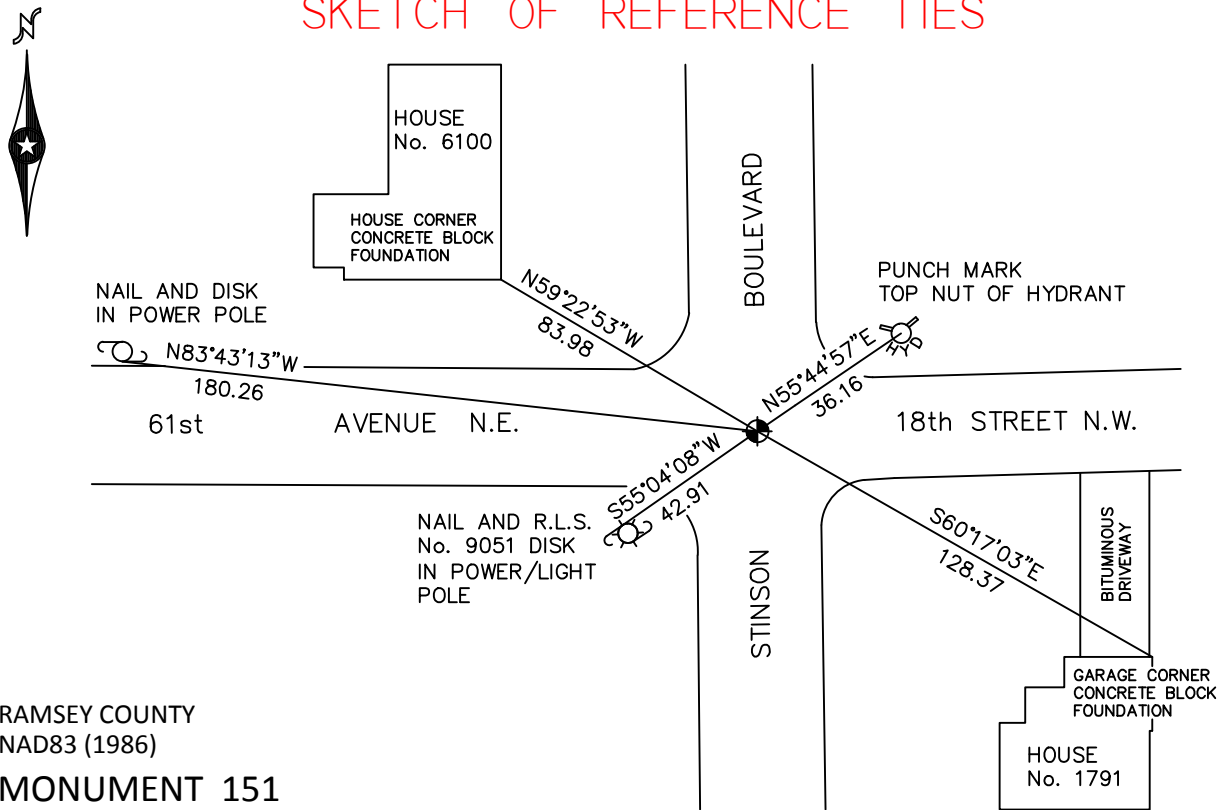
At the corner location shown on the sketch

On July 14, 2010 found a cast iron monument, within a cast iron manhole assembly.

left monument as found raised/lowered monument removed monument (explain)

On _____ placed a _____

SKETCH OF REFERENCE TIES



RAMSEY COUNTY
NAD83 (1986)

MONUMENT 151

X= 540258.743 (Easting)
Y= 204908.738 (Northing)

ALL DISTANCES ARE SHOWN IN U.S. SURVEY FEET.
BEARINGS ARE FOR TIE REFERENCE PURPOSES ONLY.

Statements of evidence relative to this corner are on the following page.

I hereby certify that this document has been prepared by me or under my direct supervision this _____ day of _____, 20____.

SIGNATURE

Minnesota License No. _____

- County Surveyor Land Surveyor
 Deputy County Surveyor

OFFICE OF COUNTY SURVEYOR
County of Ramsey

I hereby certify that this document was filed in the County Surveyor's office this _____ day of _____, 20____.

SIGNATURE

Craig W. Hinzman, L.S.
Ramsey County Surveyor

MONUMENT 151

Found a cast iron monument flush and tied, August 21, 1974.

Retied monument, January 14, 1992.

Retied monument, September 8, 1999.

Removed monument for City of New Brighton storm sewer project, June 16, 2000.

Set a 20 in. cast iron monument, down +/-18 in., within a cast iron manhole assembly, July 5, 2001.

Tied monument, March 1, 2005.

Retied monument, July 14, 2010.