

MONUMENT 148

CERTIFICATE OF LOCATION OF GOVERNMENT CORNER

East Quarter Corner of Section 14, Township 30 North, Range 22 West, County of Ramsey, State of Minnesota.

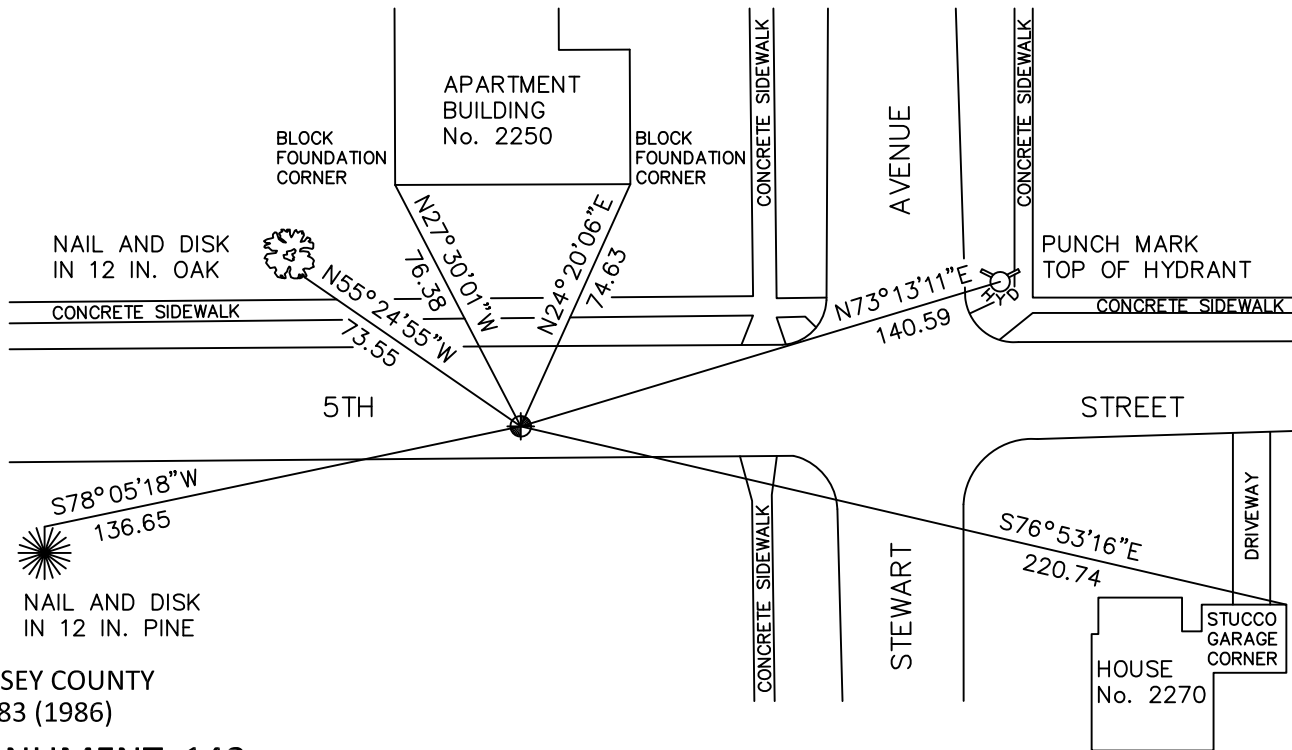
At the corner location shown on the sketch

On August 12, 2010 found a cast iron monument, flush.

left monument as found raised/lowered monument removed monument (explain)

On _____ placed a _____

SKETCH OF REFERENCE TIES



RAMSEY COUNTY
NAD83 (1986)

MONUMENT 148

X= 597679.521 (Easting)
Y= 207910.689 (Northing)

ALL DISTANCES ARE SHOWN IN U.S. SURVEY FEET.
BEARINGS ARE FOR TIE REFERENCE PURPOSES ONLY.

Statements of evidence relative to this corner are on the following page.

I hereby certify that this document has been prepared by me or under my direct supervision this _____ day of _____, 20____.

Minnesota License No. _____

- County Surveyor Deputy County Surveyor Land Surveyor

OFFICE OF COUNTY SURVEYOR
County of Ramsey

I hereby certify that this document was filed in the County Surveyor's office this _____ day of _____, 20____.

Michael D. Fiebiger, P.L.S.
Ramsey County Surveyor

MONUMENT 148

Found a granite monument flush, June, 1977.

Tied monument, down 0.16 ft., March 1, 1984.

Monument removed by street reconstruction; ties reestablished location and set P.K. nails, March 24, 1989.

Replaced with a cast iron monument, May 5, 1989.

Tied monument, flush, January 24, 1992.

Retied monument, September 23, 1999.

Retied monument, December 1, 2004.

Retied monument, August 12, 2010.