

MONUMENT 146

CERTIFICATE OF LOCATION OF GOVERNMENT CORNER

East Quarter Corner of Section 15, Township 30 North, Range 22 West, County of Ramsey, State of Minnesota.

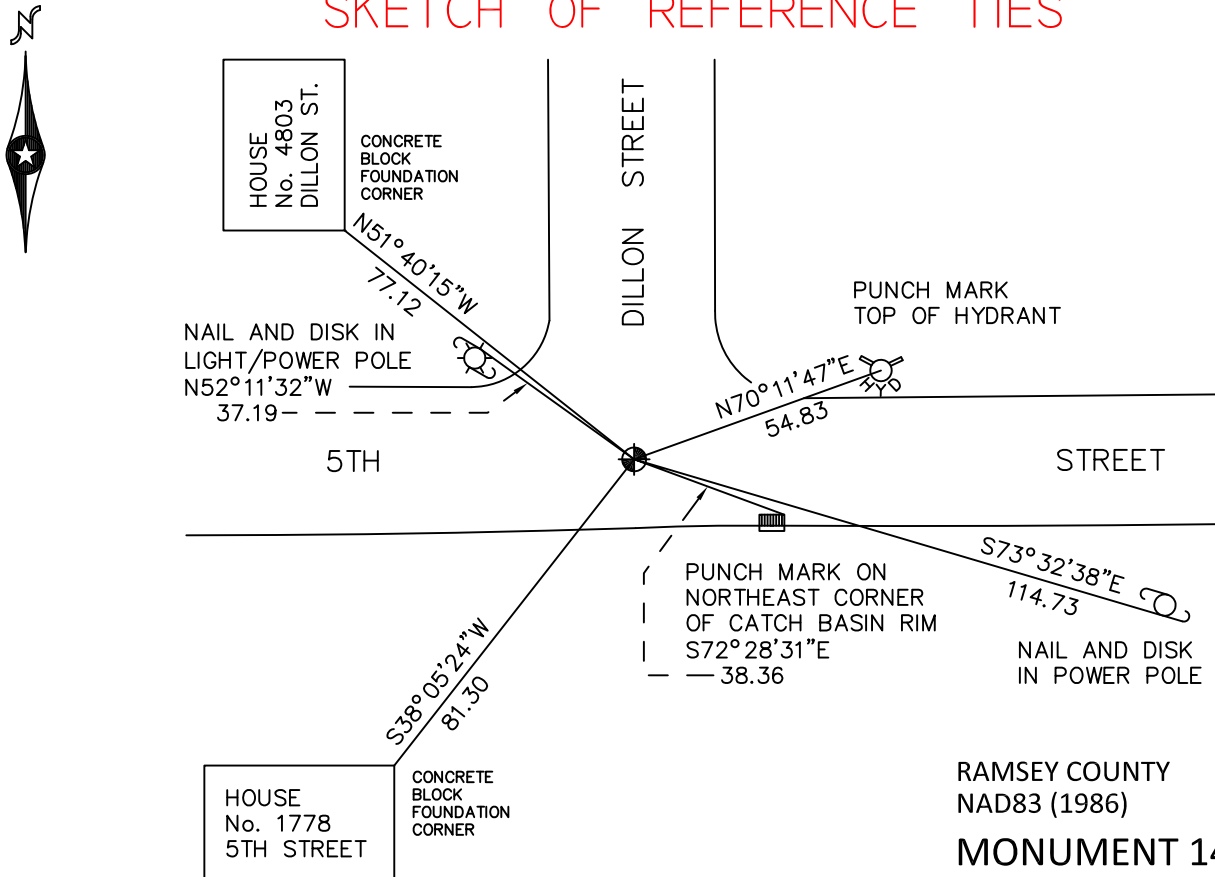
At the corner location shown on the sketch

On August 2, 2010 found a cast iron monument, flush.

left monument as found raised/lowered monument removed monument (explain)

On _____ placed a _____

SKETCH OF REFERENCE TIES



ALL DISTANCES ARE SHOWN IN U.S. SURVEY FEET.
BEARINGS ARE FOR TIE REFERENCE PURPOSES ONLY.

RAMSEY COUNTY
NAD83 (1986)
MONUMENT 146

X= 592396.377 (Easting)
Y= 207891.676 (Northing)

Statements of evidence relative to this corner are on the following page.

I hereby certify that this document has been prepared by me or under my direct supervision this _____ day of _____, 20____.

Minnesota License No. _____

- County Surveyor Deputy County Surveyor Land Surveyor

SIGNATURE

OFFICE OF COUNTY SURVEYOR
County of Ramsey

I hereby certify that this document was filed in the County Surveyor's office this _____ day of _____, 20____.

Michael D. Fiebiger, P.L.S.
Ramsey County Surveyor

SIGNATURE

MONUMENT 146

Found a cast iron monument down 6 1/2 in., top broken off; tied monument, October 10, 1974.

Removed broken cast iron monument and found 2 1/2 in. outer diameter pipe down 24 in.; dug along side of pipe to a depth of 58 in. and found no granite monument, May 8, 1975.

Placed a cast iron monument, May 9, 1975.

Monument destroyed by construction, 1988; relocated position and set P.K. nails, March 23, 1989.

Placed a cast iron monument, May 9, 1989.

Tied monument, July 17, 1990.

Retied monument, October 4, 1999.

Retied monument, December 16, 2004.

Retied monument, August 2, 2010.