

# MONUMENT 144

## CERTIFICATE OF LOCATION OF GOVERNMENT CORNER

West Quarter Corner of Section 15, Township 30 North, Range 22 West, County of Ramsey, State of Minnesota.

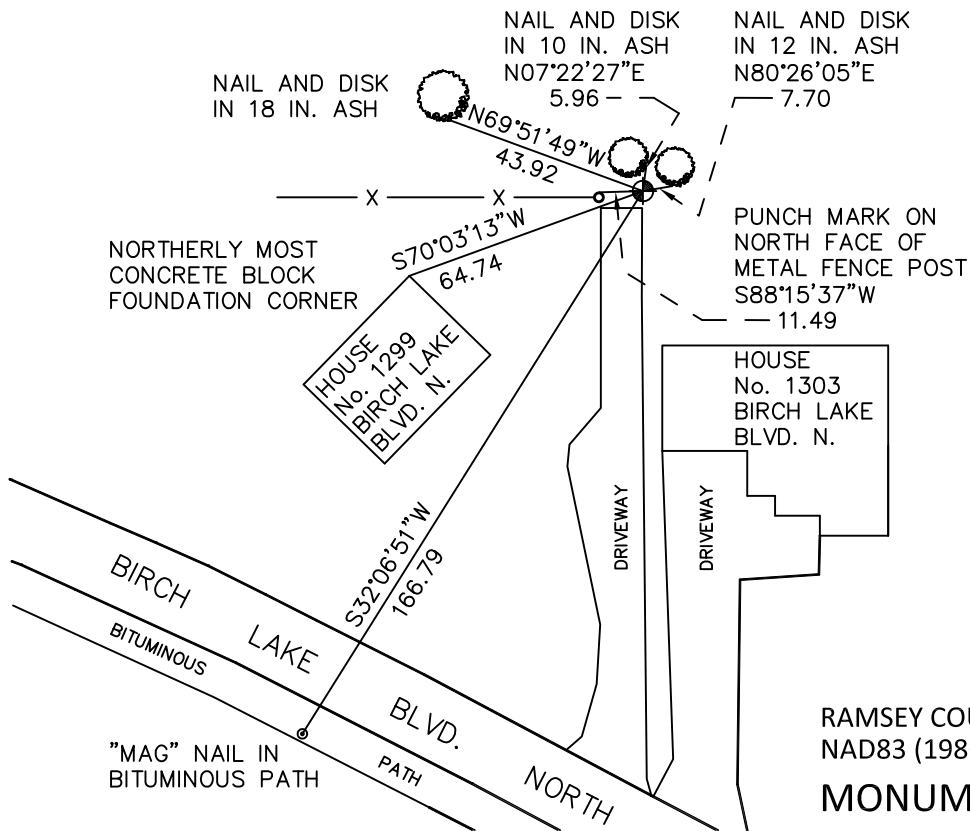
At the corner location shown on the sketch

On August 11, 2010 found a cast iron monument marked "QUARTER CORNER", up 0.4 feet.

left monument as found       raised/lowered monument       removed monument (explain)

On \_\_\_\_\_ placed a \_\_\_\_\_

### SKETCH OF REFERENCE TIES



RAMSEY COUNTY  
NAD83 (1986)

### MONUMENT 144

X= 587153.546 (Easting)  
Y= 207888.322 (Northing)

ALL DISTANCES ARE SHOWN IN U.S. SURVEY FEET.  
BEARINGS ARE FOR TIE REFERENCE PURPOSES ONLY.

Statements of evidence relative to this corner are on the following page.

I hereby certify that this document has been prepared by me or under my direct supervision this \_\_\_\_\_ day of \_\_\_\_\_, 20\_\_\_\_.

\_\_\_\_\_  
MINNESOTA LICENSE NO. \_\_\_\_\_  
SIGNATURE

- County Surveyor  
 Deputy County Surveyor       Land Surveyor

OFFICE OF COUNTY SURVEYOR  
County of Ramsey

I hereby certify that this document was filed in the County Surveyor's office this \_\_\_\_\_ day of \_\_\_\_\_, 20\_\_\_\_.

\_\_\_\_\_  
Craig W. Hinzman, L.S.  
Ramsey County Surveyor  
SIGNATURE

## MONUMENT 144

Found a granite monument up 1.2 ft.; replaced with a cast iron monument, up 0.1 ft. and tied, May 21, 1974.

Found a cast iron monument, up 4 in., painted silver, September 28, 1991.

Retied monument, September 30, 1999.

Retied monument, December 1, 2004.

Retied monument, August 11, 2010.