

MONUMENT 137

CERTIFICATE OF LOCATION OF GOVERNMENT CORNER

Center of Section 13, Township 30 North, Range 23 West, County of Ramsey,
State of Minnesota.

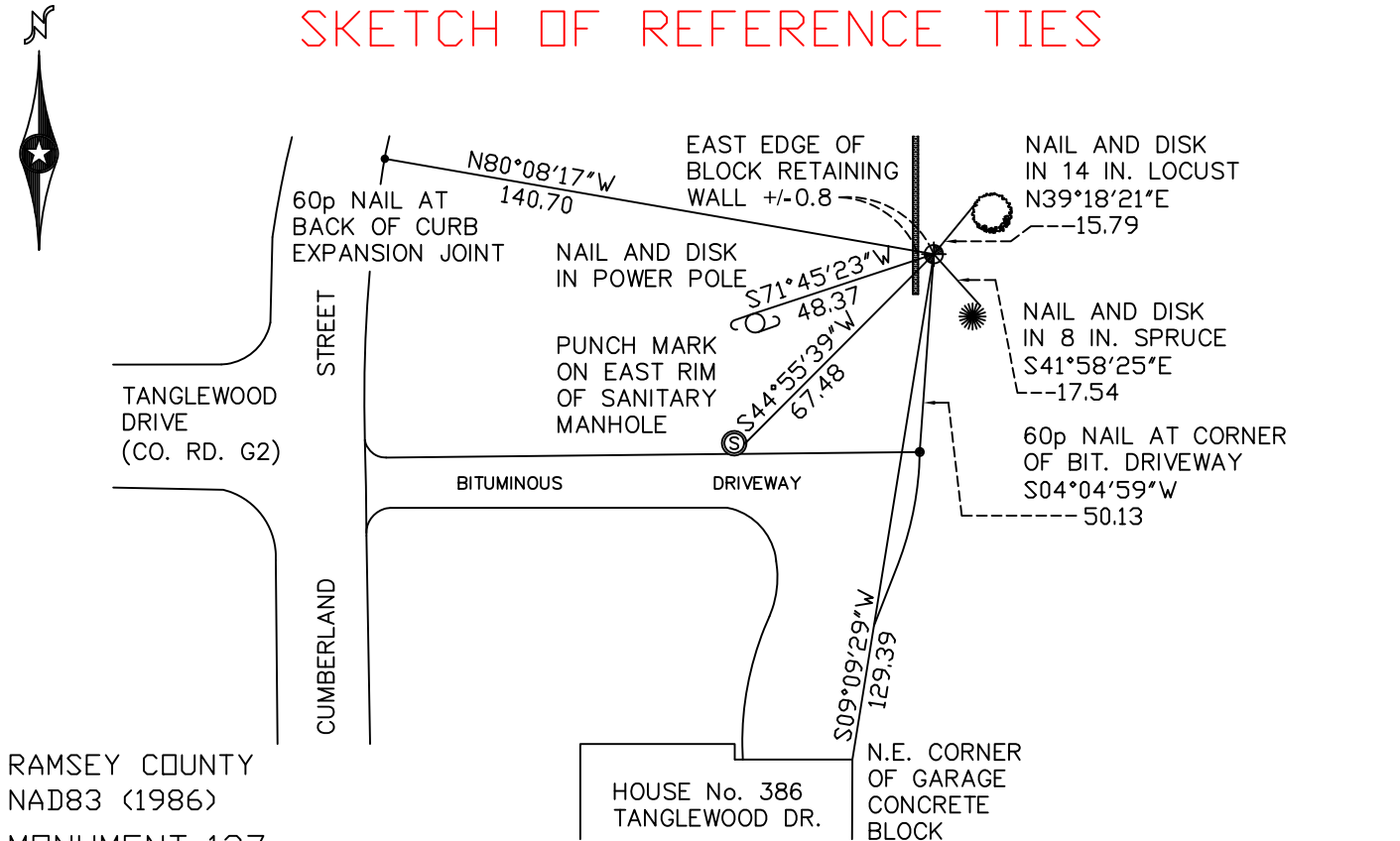
At the corner location shown on the sketch

On April 26, 2010 found a cast iron monument, down 0.80 feet.

left monument as found lowered monument removed monument (explain)

On _____ placed a _____

SKETCH OF REFERENCE TIES



RAMSEY COUNTY
NAD83 (1986)
MONUMENT 137

X= 568846.877 (Easting)
Y= 207791.454 (Northing)

ALL DISTANCES ARE SHOWN IN U.S. SURVEY FEET.
BEARINGS ARE FOR TIE REFERENCE PURPOSES ONLY.

Statements of evidence relative to this corner are on the following page(s).

I hereby certify that this document and the data contained herein was prepared by me or under my direct supervision this _____ day of _____, 20____.

SIGNATURE

Minnesota License No. _____

County Surveyor
 Deputy County Surveyor Land Surveyor

OFFICE OF COUNTY SURVEYOR
County of Ramsey

I hereby certify that this document was filed in the County Surveyor's office on the _____ day of _____, 20____.

SIGNATURE

Michael D. Fiebiger, P.L.S.
Ramsey County Surveyor

MONUMENT 137

Found a 2 in. solid iron, flush with the ground, May 29, 1974.

Found a granite monument +/- 49 ft. north of iron. Granite monument has been determined to be the correct position by David Claypool, Ramsey County Surveyor in 1991.

Ties to 2 in. iron are in the back of this book (MONUMENTS 120-179) as "Erroneous Mon. No. 137". Granite monument graded out; placed a 20 in. cast iron monument at the location of old granite monument. Old 2 in. solid iron (axle), down +/-1 ft., June 10, 1992.

Retied monument, August 3, 1999.

Retied monument, April 26, 2010.