

# MONUMENT 126

## CERTIFICATE OF LOCATION OF GOVERNMENT CORNER

West Quarter Corner of Section 18, Township 30 North, Range 23 West, County of Ramsey, State of Minnesota.

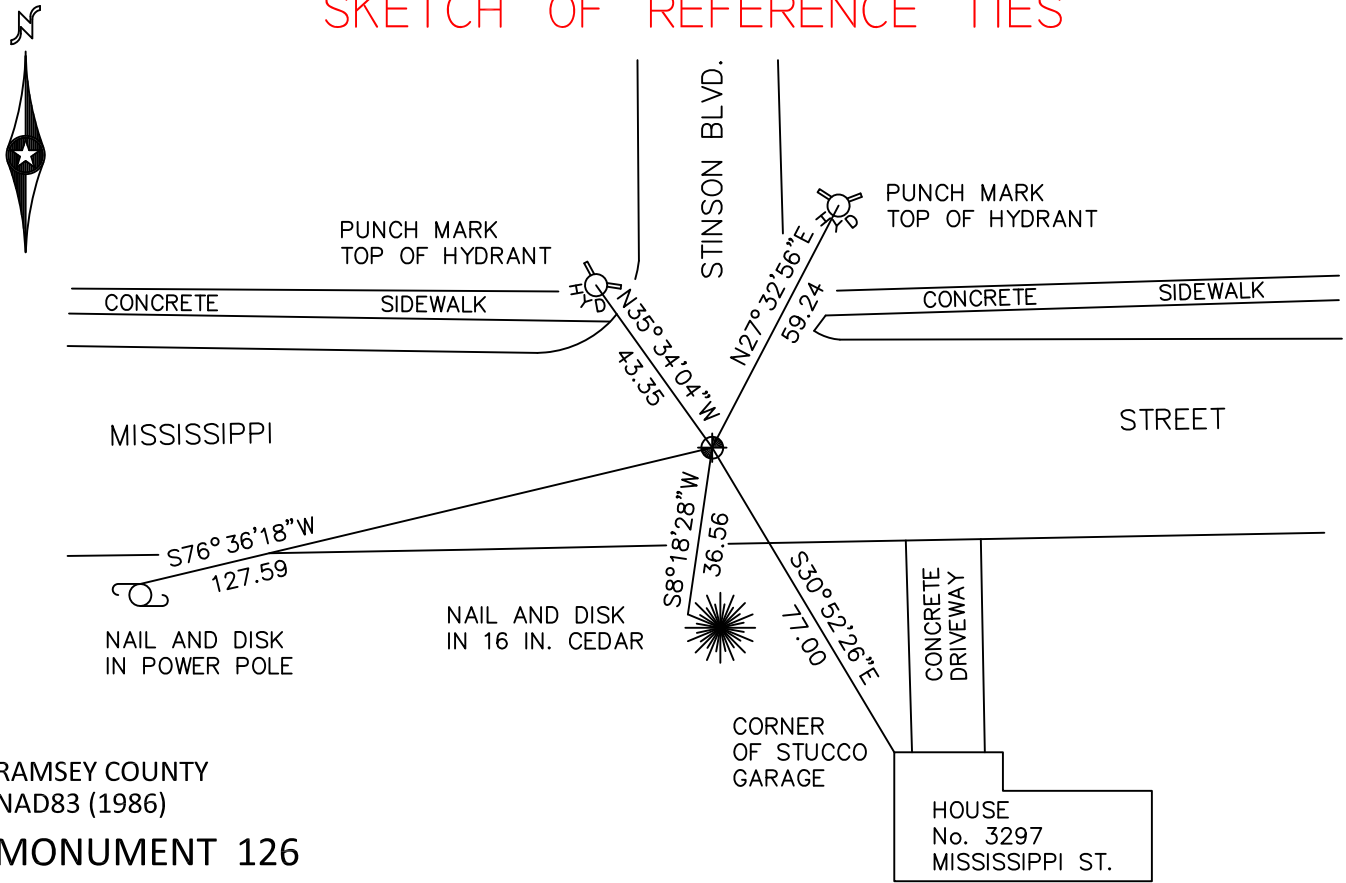
At the corner location shown on the sketch

On July 13, 2010 found a cast iron monument, down 0.05 feet.

left monument as found       raised/lowered monument       removed monument (explain)

On \_\_\_\_\_ placed a \_\_\_\_\_

### SKETCH OF REFERENCE TIES



RAMSEY COUNTY  
NAD83 (1986)

### MONUMENT 126

X= 540213.503 (Easting)  
Y= 207531.746 (Northing)

ALL DISTANCES ARE SHOWN IN U.S. SURVEY FEET.  
BEARINGS ARE FOR TIE REFERENCE PURPOSES ONLY.

Statements of evidence relative to this corner are on the following page.

I hereby certify that this document has been prepared by me or under my direct supervision this \_\_\_\_\_ day of \_\_\_\_\_, 20\_\_\_\_.

Minnesota License No. \_\_\_\_\_

- County Surveyor       Deputy County Surveyor       Land Surveyor

OFFICE OF COUNTY SURVEYOR  
County of Ramsey

I hereby certify that this document was filed in the County Surveyor's office this \_\_\_\_\_ day of \_\_\_\_\_, 20\_\_\_\_.

Michael D. Fiebiger, P.L.S.  
Ramsey County Surveyor

# MONUMENT 126

Found a cast iron monument flush; tied, August 21, 1974.

Retied monument, January 14, 1992.

Retied monument, September 8, 1999.

Retied monument, March 1, 2005.

Retied monument, July 13, 2010.