

MONUMENT 116

CERTIFICATE OF LOCATION OF GOVERNMENT CORNER

North Quarter Corner of Section 17, Township 30 North, Range 22 West, County of Ramsey, State of Minnesota.

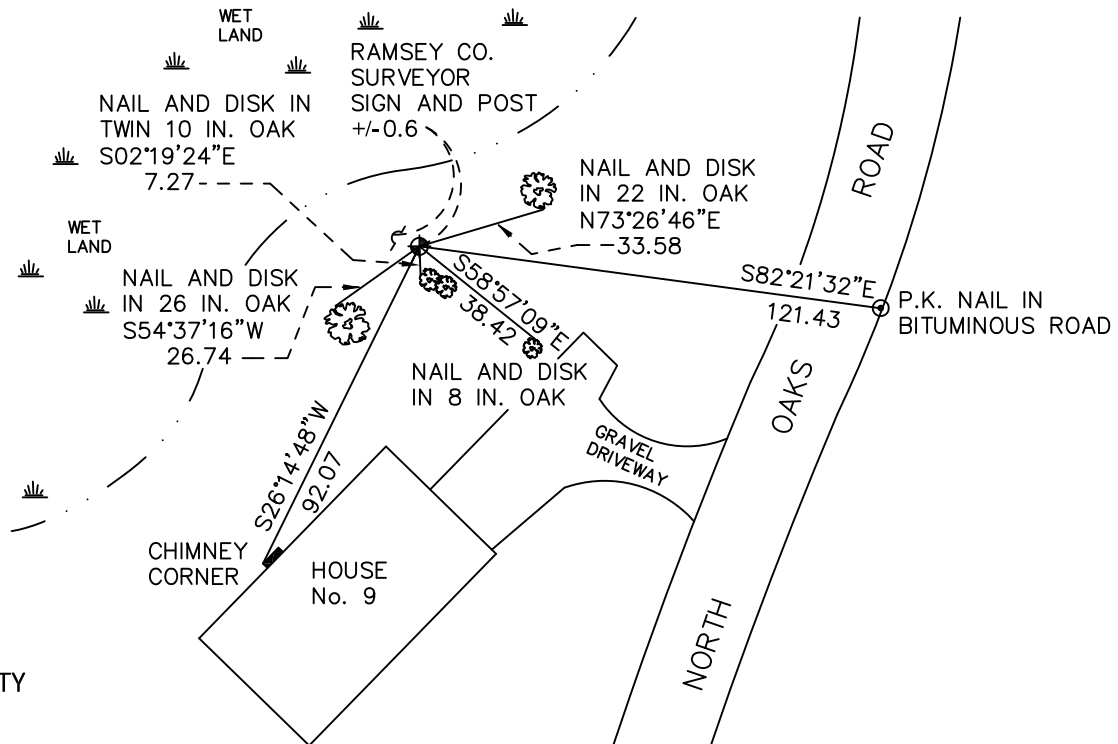
At the corner location shown on the sketch

On August 17, 2010 found a cast iron monument.

left monument as found raised/lowered monument removed monument (explain)

On _____ placed a _____

SKETCH OF REFERENCE TIES



RAMSEY COUNTY
NAD83 (1986)

MONUMENT 116

X= 579186.543 (Easting)
Y= 210469.603 (Northing)

ALL DISTANCES ARE SHOWN IN U.S. SURVEY FEET.
BEARINGS ARE FOR TIE REFERENCE PURPOSES ONLY.

Statements of evidence relative to this corner are on the following page.

I hereby certify that this document has been prepared by me or under my direct supervision this _____ day of _____, 20____.

Minnesota License No. _____

- County Surveyor Deputy County Surveyor Land Surveyor

SIGNATURE

OFFICE OF COUNTY SURVEYOR
County of Ramsey

I hereby certify that this document was filed in the County Surveyor's office this _____ day of _____, 20____.

Craig W. Hinzman, L.S.
Ramsey County Surveyor

SIGNATURE

MONUMENT 116

Found an iron cemented in 4 in. iron pipe up +/- 0.7 ft.; iron placed by Milner W. Carley & Assoc.; tied to traverse point, April 7, 1988.

Found a 4 in. iron pipe up 0.7 ft.; top rolled over, no iron or cement found; 4 in. pipe loose. Checked pipe location. Removed 4 in. pipe and set a 20 in. cast iron monument flush. Set a sign and post 0.4 ft. west, November 8, 2001.

Tied monument, November 15, 2001.

Retied monument, February 23, 2005.

Retied monument, August 17, 2010.