

MONUMENT 110E

CERTIFICATE OF LOCATION OF GOVERNMENT CORNER

Witness Corner to Meander Corner No. 11, Section 11, Township 30 North, Range 23 West, County of Ramsey, State of Minnesota.

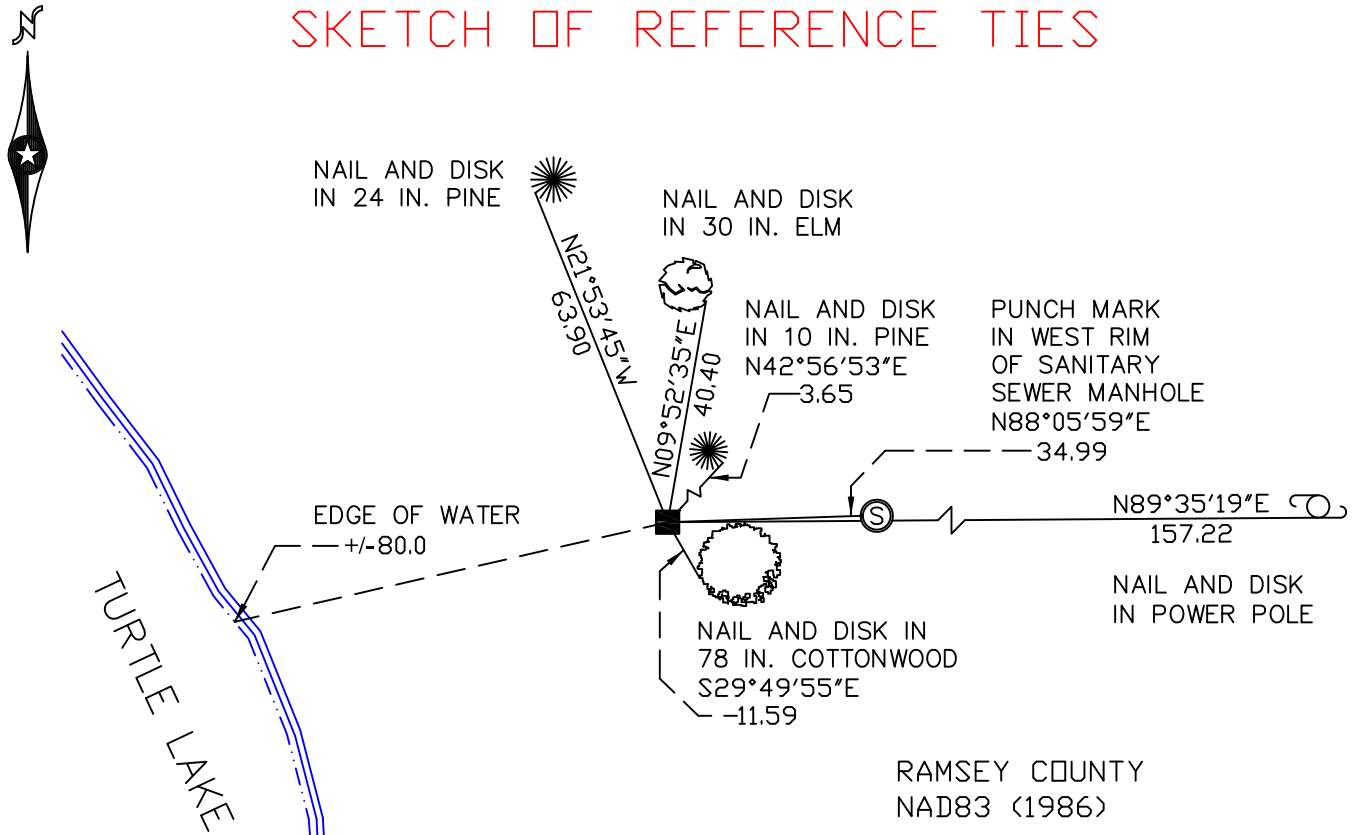
At the corner location shown on the sketch

On April 28, 2010 found a granite monument, flush.

left monument as found lowered monument removed monument (explain)

On _____ placed a _____

SKETCH OF REFERENCE TIES



ALL DISTANCES ARE SHOWN IN U.S. SURVEY FEET.
BEARINGS ARE FOR TIE REFERENCE PURPOSES ONLY.

RAMSEY COUNTY
NAD83 (1986)

MONUMENT 110E

X= 565235.676 (Easting)
Y= 210440.945 (Northing)

Statements of evidence relative to this corner are on the following page(s).

I hereby certify that this document and the data contained herein was prepared by me or under my direct supervision this _____ day of _____, 20____.

SIGNATURE

Minnesota License No. _____

- County Surveyor
 Deputy County Surveyor Land Surveyor

OFFICE OF COUNTY SURVEYOR
County of Ramsey

I hereby certify that this document was filed in the County Surveyor's office on the _____ day of _____, 20____.

SIGNATURE

Michael D. Fiebiger, P.L.S.
Ramsey County Surveyor

MONUMENT 110E

Granite monument set, September, 1900.

Granite monument out; old ties O.K. Set a granite monument 7 feet east, on high ground and tied, July 10, 1946.

Found a granite monument, flush, January 16, 1987.

Retied monument, found flush, May 25, 1995.

Retied monument, July 7, 2003.

Checked monument and found dock sections stored on top of monument, October, 2008.

Retied monument, April 28, 2010.