

# MONUMENT 107

## CERTIFICATE OF LOCATION OF GOVERNMENT CORNER

Northeast Corner of Section 16, Township 30 North, Range 23 West, County of Ramsey, State of Minnesota.

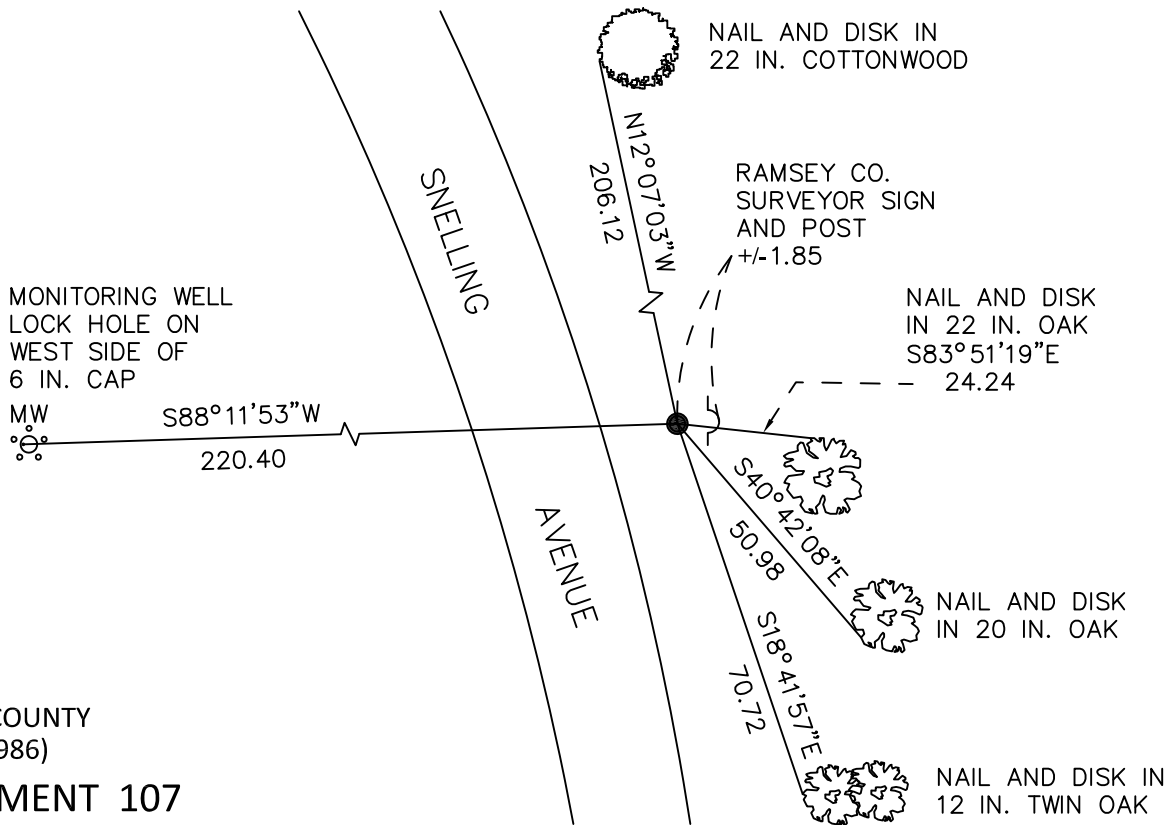
At the corner location shown on the sketch

On September 13, 2010 found a 1 1/4 inch solid pin, down 0.1 feet.

left monument as found       raised/lowered monument       removed monument (explain)

On \_\_\_\_\_ placed a \_\_\_\_\_

### SKETCH OF REFERENCE TIES



RAMSEY COUNTY  
NAD83 (1986)

### MONUMENT 107

X= 555632.854 (Easting)  
Y= 210343.540 (Northing)

ALL DISTANCES ARE SHOWN IN U.S. SURVEY FEET.  
BEARINGS ARE FOR TIE REFERENCE PURPOSES ONLY.

Statements of evidence relative to this corner are on the following page.

I hereby certify that this document has been prepared by me or under my direct supervision this \_\_\_\_\_ day of \_\_\_\_\_, 20\_\_\_\_.

Minnesota License No. \_\_\_\_\_

- County Surveyor       Deputy County Surveyor       Land Surveyor

SIGNATURE

OFFICE OF COUNTY SURVEYOR  
County of Ramsey

I hereby certify that this document was filed in the County Surveyor's office this \_\_\_\_\_ day of \_\_\_\_\_, 20\_\_\_\_.

Michael D. Fiebiger, P.L.S.  
Ramsey County Surveyor

SIGNATURE

# MONUMENT 107

Found 1 in. solid iron, flush, off shoulder of road, August, 1991.

Tied monument, August 20, 1991.

Placed sign and post +/-2 ft. east of monument, August 26, 1991.

Retied monument, April 3, 2001.

Retied monument, March 9, 2005.

Retied monument, September 13, 2010.