

MONUMENT 106

CERTIFICATE OF LOCATION OF GOVERNMENT CORNER

North Quarter Corner of Section 16, Township 30 North, Range 23 West, County of Ramsey, State of Minnesota.

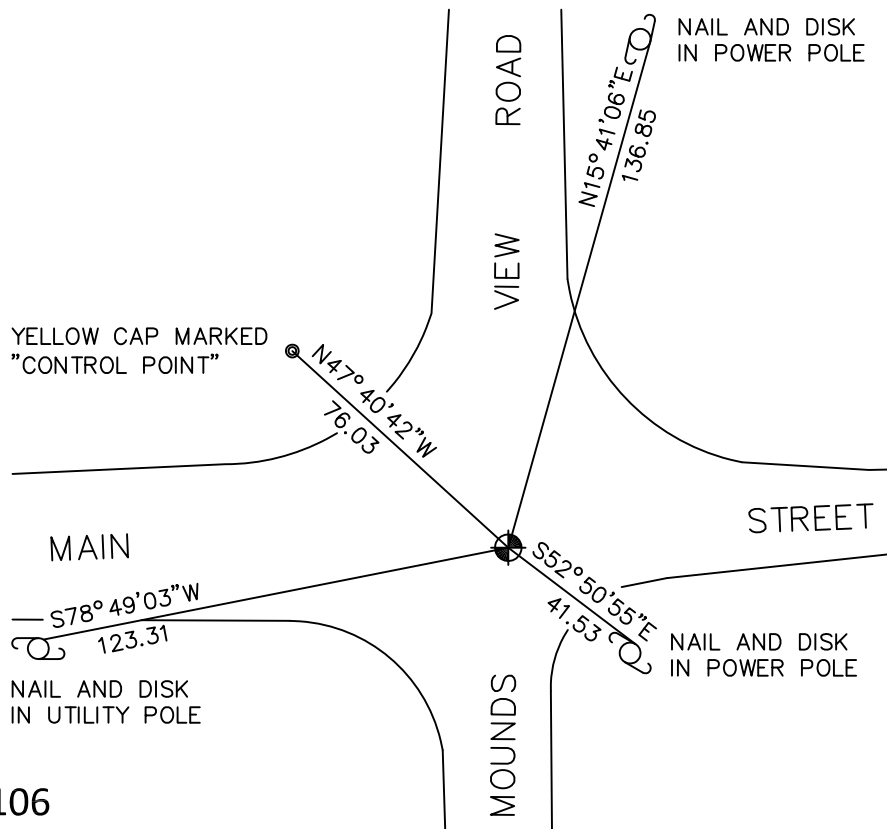
At the corner location shown on the sketch

On September 15, 2010 found a cast iron monument, down 0.05 feet.

left monument as found raised/lowered monument removed monument (explain)

On _____ placed a _____

SKETCH OF REFERENCE TIES



RAMSEY COUNTY
NAD83 (1986)

MONUMENT 106

X= 552993.129 (Easting)
Y= 210339.829 (Northing)

ALL DISTANCES ARE SHOWN IN U.S. SURVEY FEET.
BEARINGS ARE FOR TIE REFERENCE PURPOSES ONLY.

Statements of evidence relative to this corner are on the following page.

I hereby certify that this document has been prepared by me or under my direct supervision this _____ day of _____, 20____.

Minnesota License No. _____

- County Surveyor Deputy County Surveyor Land Surveyor

SIGNATURE

OFFICE OF COUNTY SURVEYOR
County of Ramsey

I hereby certify that this document was filed in the County Surveyor's office this _____ day of _____, 20____.

Michael D. Fiebiger, P.L.S.
Ramsey County Surveyor

SIGNATURE

MONUMENT 106

Found a 3/4 in. x 24 in. long rod inside of a 1 in. x 12 in. long pipe. Dug down 2.3 ft., encountered 1 1/2 in. to 2 in. gravel all the way. Placed a 20 in. cast iron monument flush and tied, August 21, 1991.

Retied monument, April 3, 2001.

Retied monument, March 9, 2005.

Retied monument, September 15, 2010.