

# MONUMENT 99

## CERTIFICATE OF LOCATION OF GOVERNMENT CORNER

Center of Section 12, Township 30 North, Range 22 West, County of Ramsey,  
State of Minnesota.

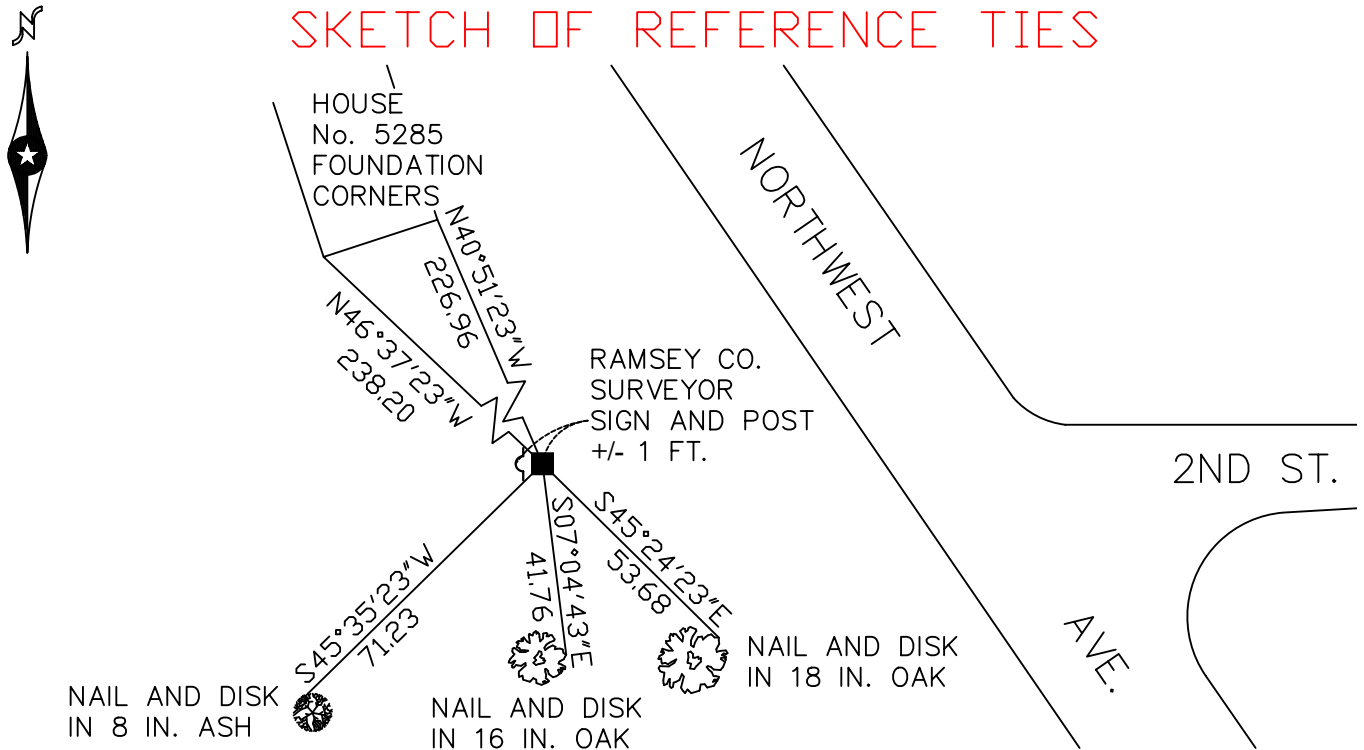
At the corner location shown on the sketch

On November 10, 2009 found a granite monument, flush.

left monument as found     lowered monument     removed monument (explain)

On \_\_\_\_\_ placed a \_\_\_\_\_

### SKETCH OF REFERENCE TIES



RAMSEY COUNTY  
NAD83 (1986)  
MONUMENT 99  
X= 600335.838 (Easting)  
Y= 213218.496 (Northing)

ALL DISTANCES ARE SHOWN IN U.S. SURVEY FEET.  
BEARINGS ARE FOR TIE REFERENCE PURPOSES ONLY.

Statements of evidence relative to this corner are on the following page(s).

I hereby certify that this document and the data contained herein was prepared by me or under my direct supervision this \_\_\_\_\_ day of \_\_\_\_\_, 20\_\_\_\_.

\_\_\_\_\_  
SIGNATURE

Minnesota License No. \_\_\_\_\_

- County Surveyor
- Deputy County Surveyor     Land Surveyor

OFFICE OF COUNTY SURVEYOR  
County of Ramsey

I hereby certify that this document was filed in the County Surveyor's office on the \_\_\_\_\_ day of \_\_\_\_\_, 20\_\_\_\_.

\_\_\_\_\_  
SIGNATURE

Michael D. Fiebiger, P.L.S.  
Ramsey County Surveyor

# MONUMENT 99

Granite monument set, December 22, 1903.

East Quarter corner position moved, center of section was adjusted; see survey book "N", page 21. Available at Ramsey County Public Works file room, August, 1905.

Found granite monument flush and retied, July 18, 1974.

Found granite monument flush and retied, December 4, 1992.

Granite monument found up 0.1 ft.; set a sign and post +/-1 ft. west of monument, December 8, 1999.

Retied monument, October 12, 2004.

Retied monument, November 10, 2009.