

MONUMENT 95

CERTIFICATE OF LOCATION OF GOVERNMENT CORNER

Center of Section 10, Township 30 North, Range 22 West, County of Ramsey,
State of Minnesota.

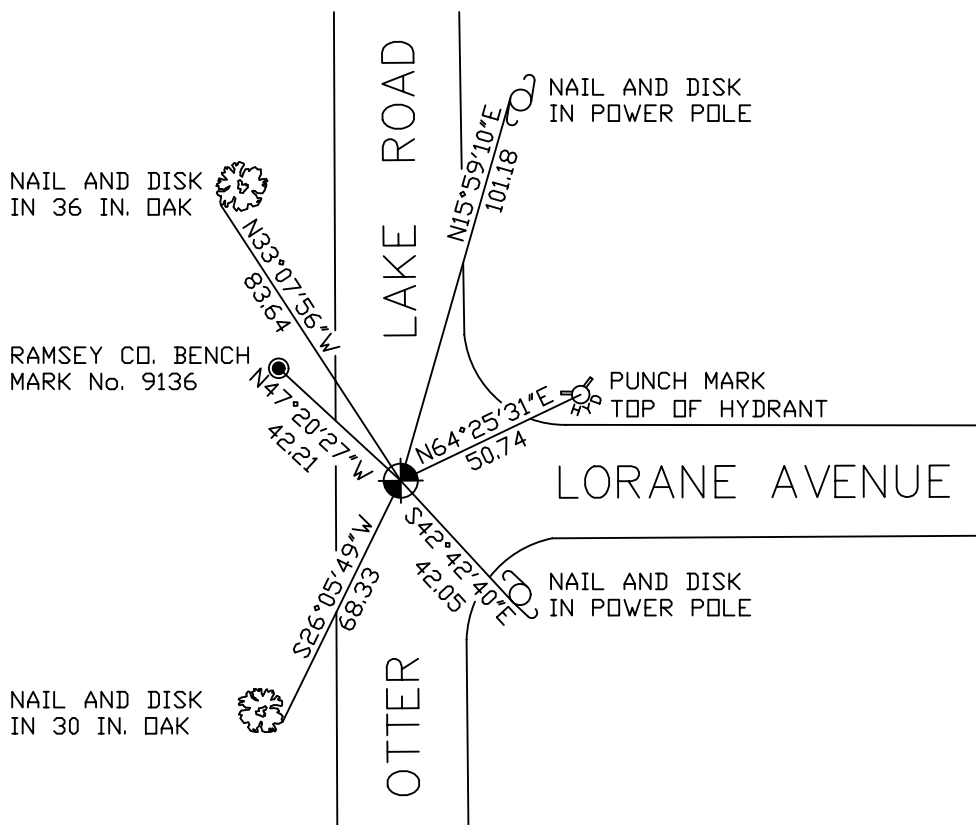
At the corner location shown on the sketch

On October 13, 2009 found a cast iron monument, flush.

left monument as found lowered monument removed monument (explain)

On _____ placed a _____

SKETCH OF REFERENCE TIES



RAMSEY COUNTY
NAD83 (1986)
MONUMENT 95

X= 589734.916 (Easting)
Y= 213178.200 (Northing)

ALL DISTANCES ARE SHOWN IN U.S. SURVEY FEET.
BEARINGS ARE FOR TIE REFERENCE PURPOSES ONLY.

Statements of evidence relative to this corner are on the following page(s).

I hereby certify that this document and the data contained herein was prepared by me or under my direct supervision this _____ day of _____, 20____.

SIGNATURE

Minnesota License No. _____

- County Surveyor
 Deputy County Surveyor Land Surveyor

OFFICE OF COUNTY SURVEYOR
County of Ramsey

I hereby certify that this document was filed in the County Surveyor's office on the _____ day of _____, 20____.

SIGNATURE

Michael D. Fiebiger, P.L.S.
Ramsey County Surveyor

MONUMENT 95

Found a granite monument, down 0.6 ft.; placed a cast iron cap and bolt monument in concrete over granite monument, May 21, 1974.

Retied monument, July 3, 1974.

Removed cap for milling project, 1989. After milling, granite monument is down +/- 0.95 ft.; placed an 0.8 ft. custom welded cast iron monument, September 25, 1989.

Retied monument, January 26, 1993.

Retied monument, April 14, 1999.

Retied monument, November 15, 2004.

Retied monument, October 13, 2009.