

MONUMENT 95N

CERTIFICATE OF LOCATION OF GOVERNMENT CORNER

North Sixteenth Corner between Section 9 and Section 10, Township 30 North,
Range 22 West, County of Ramsey, State of Minnesota.

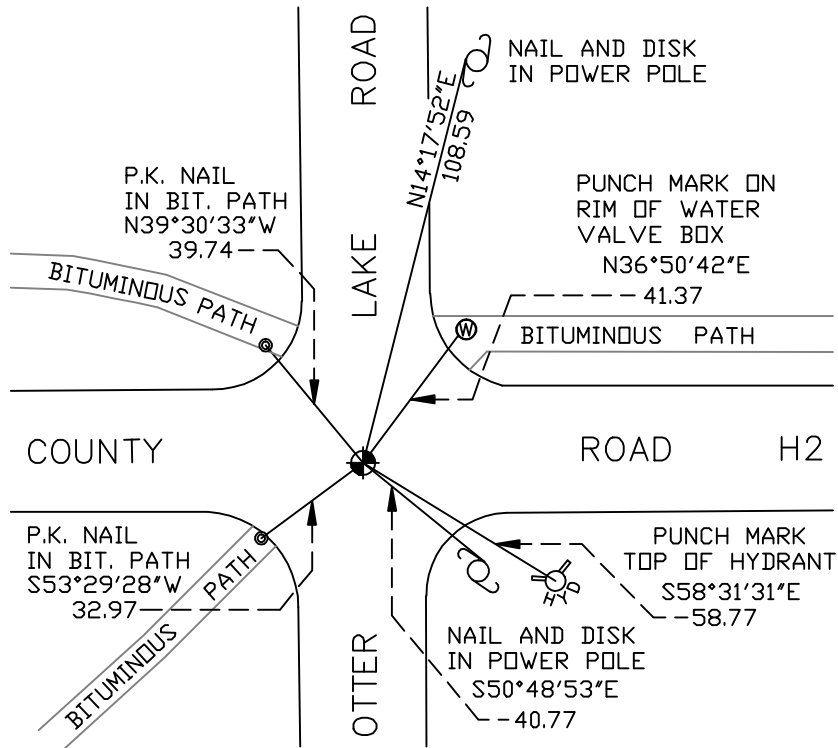
At the corner location shown on the sketch

On October 13, 2009 found a cast iron monument, within a cast iron manhole assembly.

left monument as found lowered monument removed monument (explain)

On _____ placed a _____

SKETCH OF REFERENCE TIES



RAMSEY COUNTY
NAD83 (1986)

MONUMENT 95N

X= 589728.285 (Easting)
Y= 214487.240 (Northing)

ALL DISTANCES ARE SHOWN IN U.S. SURVEY FEET.
BEARINGS ARE FOR TIE REFERENCE PURPOSES ONLY.

Statements of evidence relative to this corner are on the following page(s).

I hereby certify that this document and the data contained herein was prepared by me or under my direct supervision this _____ day of _____, 20____.

SIGNATURE

Minnesota License No. _____

- County Surveyor
 Deputy County Surveyor Land Surveyor

OFFICE OF COUNTY SURVEYOR

County of Ramsey

I hereby certify that this document was filed in the County Surveyor's office on the _____ day of _____, 20____.

SIGNATURE

Michael D. Fiebiger, P.L.S.
Ramsey County Surveyor

MONUMENT 95N

Placed a 20 in. cast iron monument; no date given in book.

Cast iron monument gone; found bolt spike and dug for cast iron monument; found $\frac{3}{4}$ in. open iron pipe down +/- 0.9 ft.; set a 20 in. cast iron monument and tied out, September 3, 1993.

Lowered cast iron monument 18 in., July 30, 1998.

Set a cast iron manhole assembly over a 20 in. cast iron monument, August 31, 1998.

Retied monument and adjusted, April 14 and 21, 1999.

Retied monument, October 26, 2004.

Retied monument, October 13, 2009.