

MONUMENT 75N

CERTIFICATE OF LOCATION OF GOVERNMENT CORNER

South Sixteenth Corner between Section 1, Township 30 North, Range 22 West,
County of Ramsey, State of Minnesota and Section 6, Township 30 North,
Range 21 West, County of Washington, State of Minnesota.

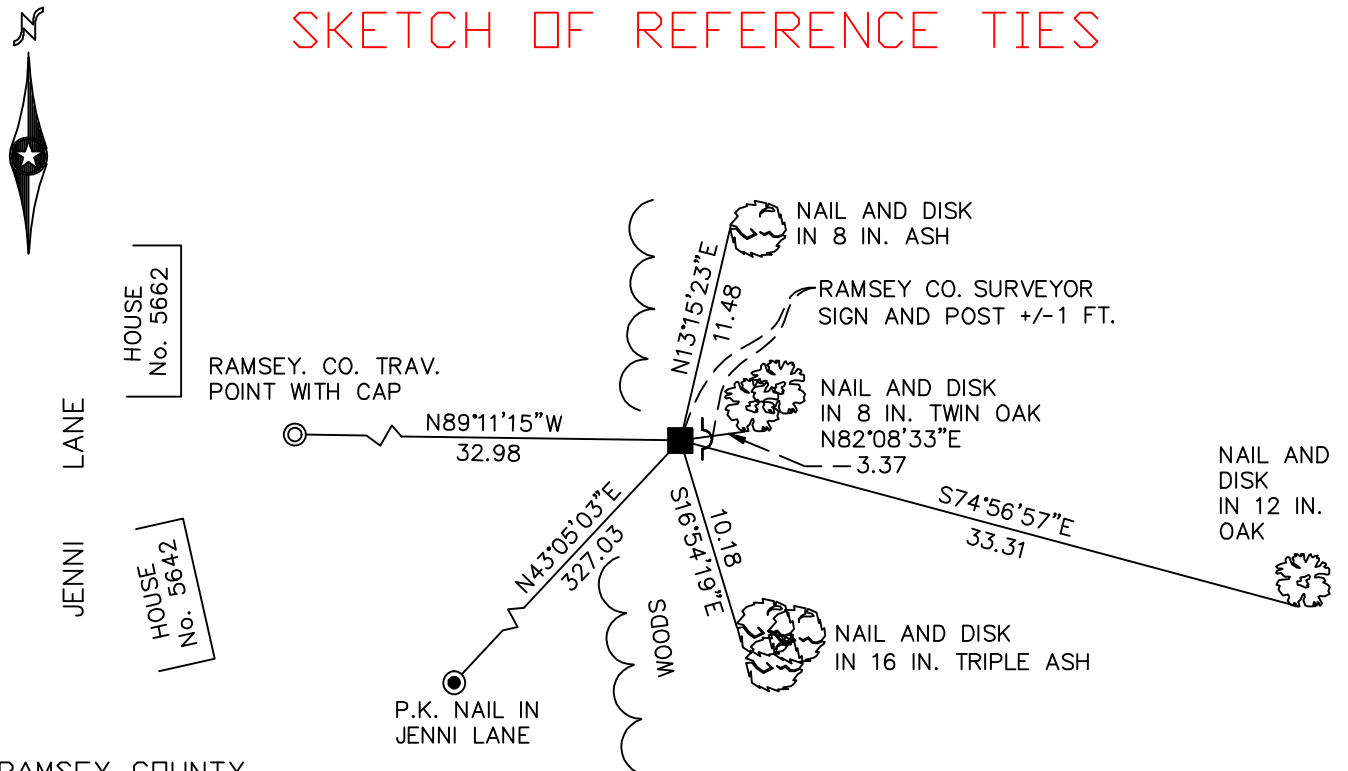
At the corner location shown on the sketch

On November 18, 2009 found a granite monument, down 0.4 feet.

left monument as found lowered monument removed monument (explain)

On _____ placed a _____

SKETCH OF REFERENCE TIES



RAMSEY COUNTY
NAD83 (1986)

MONUMENT 75N

X= 602969.664 (Easting)
Y= 217299.356 (Northing)

ALL DISTANCES ARE SHOWN IN U.S. SURVEY FEET.
BEARINGS ARE FOR TIE REFERENCE PURPOSES ONLY.

Statements of evidence relative to this corner are on the following page(s).

I hereby certify that this document and the data contained herein was prepared by me or under my direct supervision this _____ day of _____, 20____.

SIGNATURE

Minnesota License No. _____

- County Surveyor
 Deputy County Surveyor Land Surveyor

OFFICE OF COUNTY SURVEYOR

County of Ramsey

I hereby certify that this document was filed in the County Surveyor's office on the _____ day of _____, 20____.

SIGNATURE

Michael D. Fiebiger, P.L.S.
Ramsey County Surveyor

MONUMENT 75N

Found a granite monument down 0.75 ft., no date in field book.

Tied granite monument, down 0.75 ft., July 31, 1981.

Retied granite monument, down 0.4 ft., December 7, 1999.

Set a sign and post +/-1 ft. east of monument, December 8, 1999.

Retied monument, October 27, 2004.

Retied monument, November 18, 2009.