

# MONUMENT 6SC

## CERTIFICATE OF LOCATION OF GOVERNMENT CORNER

North Quarter Corner of Section 4, Township 30 North, Range 23 West, County of Ramsey, State of Minnesota.

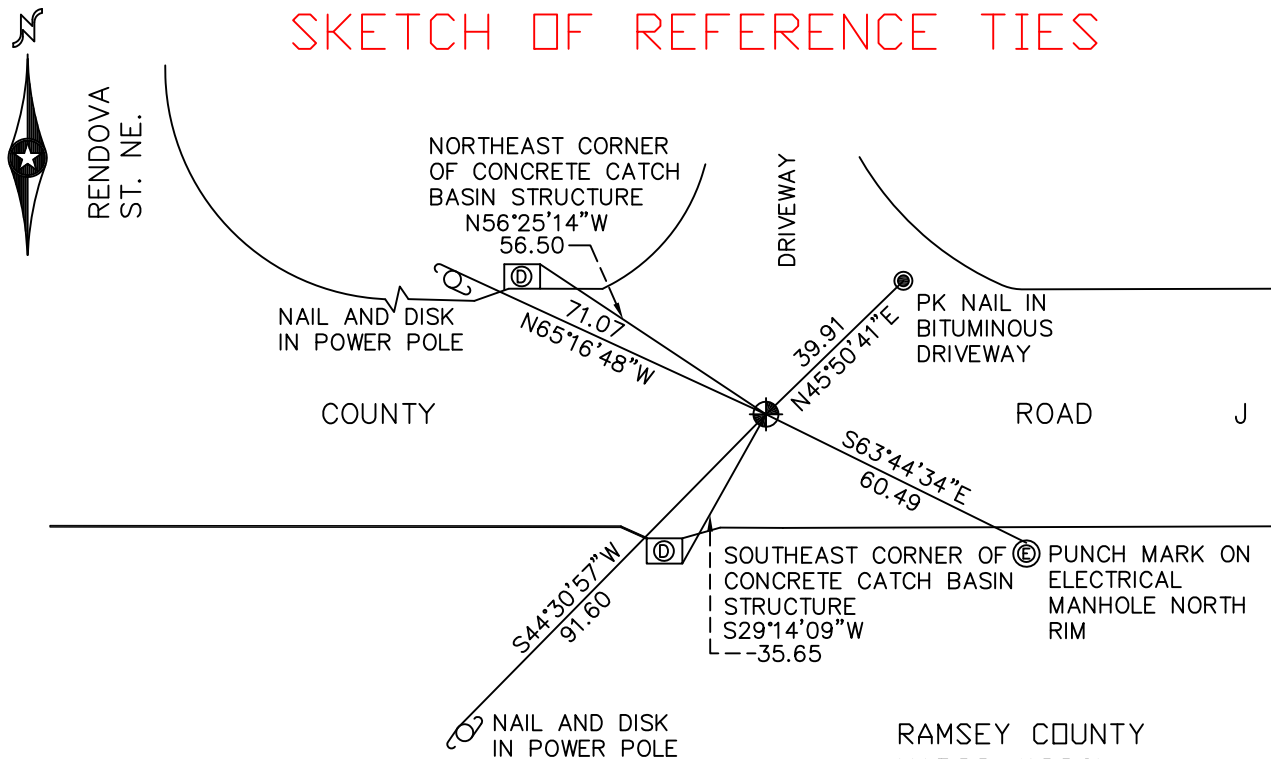
At the corner location shown on the sketch

On September 2, 2009 found a cast iron monument, marked "3RD CORRECTION LINE",  
(2622.79 feet west of monument 7SC), down 0.03 feet.

left monument as found     lowered monument     removed monument (explain)

On \_\_\_\_\_ placed a \_\_\_\_\_

## SKETCH OF REFERENCE TIES



RAMSEY COUNTY  
 NAD83 (1986)

MONUMENT 6SC

X= 552868.790 (Easting)  
 Y= 221561.785 (Northing)

"CLOSING CORNER" IS 0.14 FT. NORTH.

ALL DISTANCES ARE SHOWN IN U.S. SURVEY FEET.  
 BEARINGS ARE FOR TIE REFERENCE PURPOSES ONLY.

Statements of evidence relative to this corner are on the following page(s).

I hereby certify that this document and the data contained herein was prepared by me or under my direct supervision this \_\_\_\_\_ day of \_\_\_\_\_, 20\_\_\_\_.

SIGNATURE

Minnesota License No. \_\_\_\_\_

- County Surveyor  
 Deputy County Surveyor     Land Surveyor

OFFICE OF COUNTY SURVEYOR  
 County of Ramsey

I hereby certify that this document was filed in the County Surveyor's office on the \_\_\_\_\_ day of \_\_\_\_\_, 20\_\_\_\_.

SIGNATURE

Michael D. Fiebiger, P.L.S.  
 Ramsey County Surveyor

## MONUMENT 6SC

Found iron in concrete; found granite monument down 0.78 ft., July 23, 1975.

Set short cast iron monument, July 31, 1975.

Retied monument, December 9, 1975.

Construction destroyed monument during 1987; relocated position, August 30, 1988.

Placed 20 in. cast iron monument, October 25, 1988.

Cemented monument in place, October 21, 1993.

Removed 20 in. cast iron monument and set a 20 in. cast iron monument marked "3RD CORRECTION LINE" and cemented in place, 0.14 ft. south of original granite monument location, July 20, 1995.

Tied monument 6SC, December 14, 1998.

Retied monument, June, 2004.

Retied monument, September 2, 2009.