

# MONUMENT 68

## CERTIFICATE OF LOCATION OF GOVERNMENT CORNER

South Quarter Corner of Section 4, Township 30 North, Range 22 West, County of Ramsey, State of Minnesota.

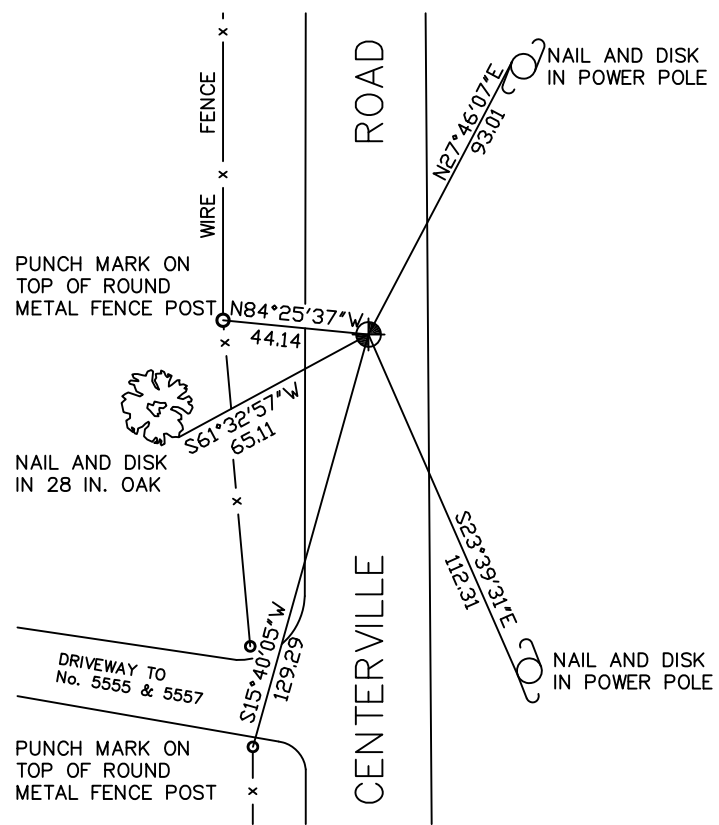
At the corner location shown on the sketch

On July 27, 2009 found a cast iron monument, flush.

left monument as found     lowered monument     removed monument (explain)

On \_\_\_\_\_ placed a \_\_\_\_\_

### SKETCH OF REFERENCE TIES



RAMSEY COUNTY  
NAD83 (1986)  
MONUMENT 68

X= 584427.762 (Easting)  
Y= 215778.855 (Northing)

ALL DISTANCES ARE SHOWN IN U.S. SURVEY FEET.  
BEARINGS ARE FOR TIE REFERENCE PURPOSES ONLY.

Statements of evidence relative to this corner are on the following page(s).

I hereby certify that this document and the data contained herein was prepared by me or under my direct supervision this \_\_\_\_\_ day of \_\_\_\_\_, 20\_\_\_\_.

SIGNATURE

Minnesota License No. \_\_\_\_\_

- County Surveyor  
 Deputy County Surveyor     Land Surveyor

OFFICE OF COUNTY SURVEYOR  
County of Ramsey

I hereby certify that this document was filed in the County Surveyor's office on the \_\_\_\_\_ day of \_\_\_\_\_, 20\_\_\_\_.

SIGNATURE

Michael D. Fiebiger, P.L.S.  
Ramsey County Surveyor

## MONUMENT 68

Found 1 1/4 in. bolt with nut, 2 ft. long and down 0.3 ft. Found 8 in. railroad spike down 1.0 ft. Found possible granite monument tipped at a 45 degree angle, down 1.5 ft.; did not try to upright. Placed a cast iron monument in the same place as 1 1/4 in. bolt, flush with pavement, May 17, 1974.

Tied monument, July 3, 1974.

Monument removed for construction department, 1989.

Reset a 20 in. cast iron monument, flush, November 24, 1992.

Retied monument, January 25, 1993.

Retied monument, November 15, 1999.

Retied monument, July 12, 2004.

Retied monument, July 27, 2009.