

# MONUMENT 59

## CERTIFICATE OF LOCATION OF GOVERNMENT CORNER

Southwest Corner of Section 2, Township 30 North, Range 23 West, County of Ramsey, State of Minnesota.

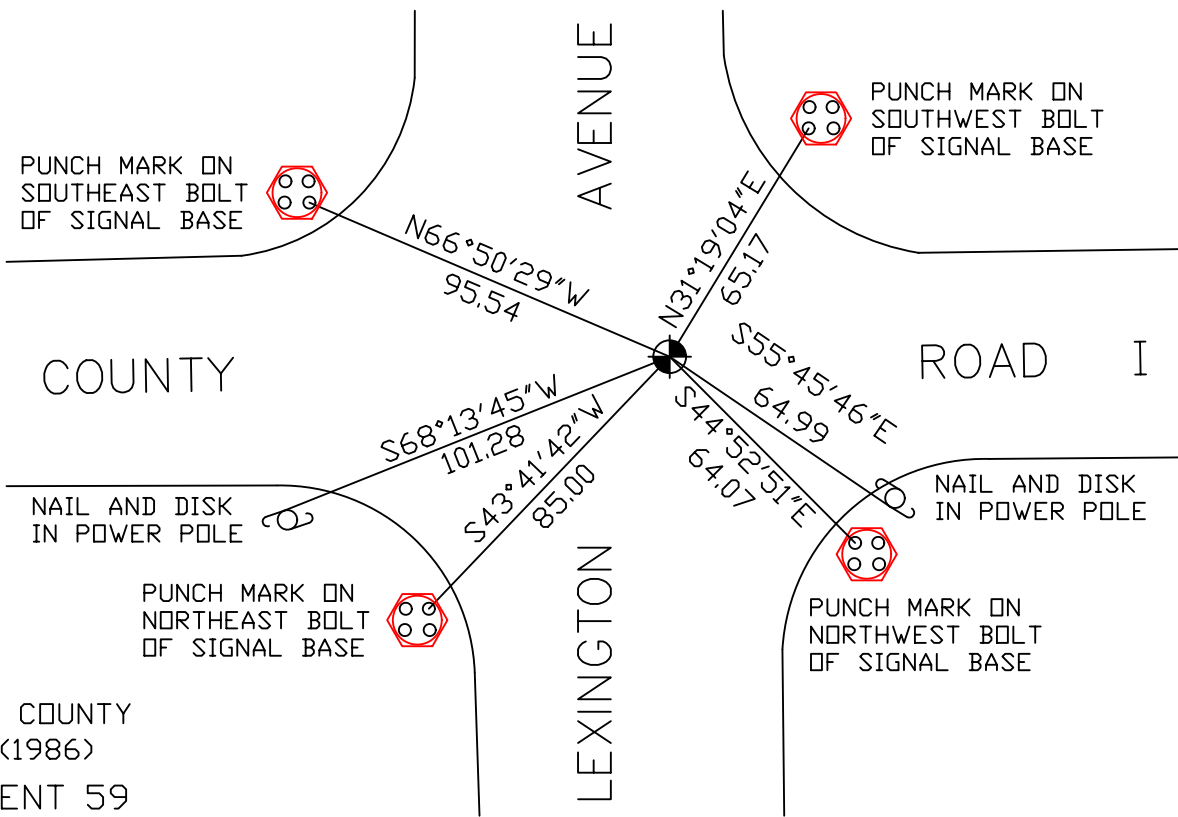
At the corner location shown on the sketch

On September 1, 2009 found a cast iron monument, within a cast iron manhole assembly.

left monument as found     lowered monument     removed monument (explain)

On \_\_\_\_\_ placed a \_\_\_\_\_

### SKETCH OF REFERENCE TIES



RAMSEY COUNTY  
NAD83 (1986)  
MONUMENT 59

X= 560845.139 (Easting)  
Y= 215658.748 (Northing)

ALL DISTANCES ARE SHOWN IN U.S. SURVEY FEET.  
BEARINGS ARE FOR TIE REFERENCE PURPOSES ONLY.

Statements of evidence relative to this corner are on the following page(s).

I hereby certify that this document and the data contained herein was prepared by me or under my direct supervision this \_\_\_\_\_ day of \_\_\_\_\_, 20\_\_\_\_.

SIGNATURE

Minnesota License No. \_\_\_\_\_

- County Surveyor  
 Deputy County Surveyor     Land Surveyor

OFFICE OF COUNTY SURVEYOR  
County of Ramsey

I hereby certify that this document was filed in the County Surveyor's office on the \_\_\_\_\_ day of \_\_\_\_\_, 20\_\_\_\_.

SIGNATURE

Michael D. Fiebiger, P.L.S.  
Ramsey County Surveyor

## MONUMENT 59

Found a granite monument and set a cast iron cap monument, January 27, 1975.

Tied out and removed cast iron cap monument for Construction Department, April 30, 1990.

Replaced granite monument with a 20 in. cast iron monument, August 21, 1991.

Placed concrete around monument and tied out, August 30, 1991.

Retied monument, March 21, 2001.

Monument lowered for the milling of Lexington Avenue and Co. Rd. I to a point 1.2 ft. below bituminous surface. Placed a cast iron manhole assembly around cast iron monument. No date given in field book.

Retied monument, August 28, 2004.

Retied monument, September 1, 2009.