

MONUMENT 508

CERTIFICATE OF LOCATION OF GOVERNMENT CORNER

North Quarter Corner of Section 25, Township 29 North, Range 22 West,
County of Ramsey, State of Minnesota.

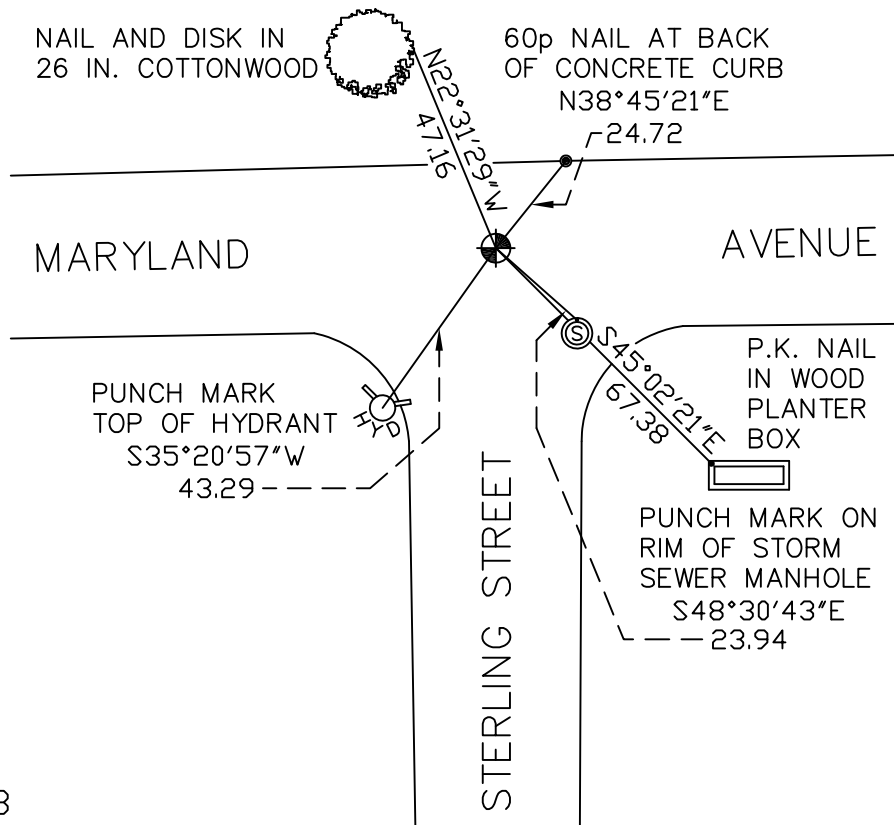
At the corner location shown on the sketch

On June 11, 2009 found a cast iron monument, within a cast iron manhole
assembly.

left monument as found lowered monument removed monument (explain)

On _____ placed a _____

SKETCH OF REFERENCE TIES



RAMSEY COUNTY
NAD83 (1986)
MONUMENT 508

X= 600526.336 (Easting)
Y= 168249.247 (Northing)

ALL DISTANCES ARE SHOWN IN U.S. SURVEY FEET.
BEARINGS ARE FOR TIE REFERENCE PURPOSES ONLY.

Statements of evidence relative to this corner are on the following page(s).

I hereby certify that this document and the data contained herein was prepared by me or under my direct supervision this _____ day of _____, 20____.

SIGNATURE

Minnesota License No. _____

- County Surveyor Deputy County Surveyor Land Surveyor

OFFICE OF COUNTY SURVEYOR
County of Ramsey

I hereby certify that this document was filed in the County Surveyor's office on the _____ day of _____, 20____.

SIGNATURE

Michael D. Fiebiger, P.L.S.
Ramsey County Surveyor

MONUMENT 508

Found a granite monument, 1975.

Monument destroyed by construction; replaced with a cast iron monument, no date given in field book.

Tied monument, February, 1985.

Retied monument, found flush, September 24, 1993.

Retied monument, found flush, April 14, 2003.

Lowered cast iron monument; placed a cast iron manhole and tube assembly around monument for milling project, July 20, 2005.

Tied monument, June 11, 2009.