

# MONUMENT 49N

## CERTIFICATE OF LOCATION OF GOVERNMENT CORNER

Monument on the North and South Quarter Line of Section 1, Township 30 North, Range 22 West, County of Ramsey, State of Minnesota.

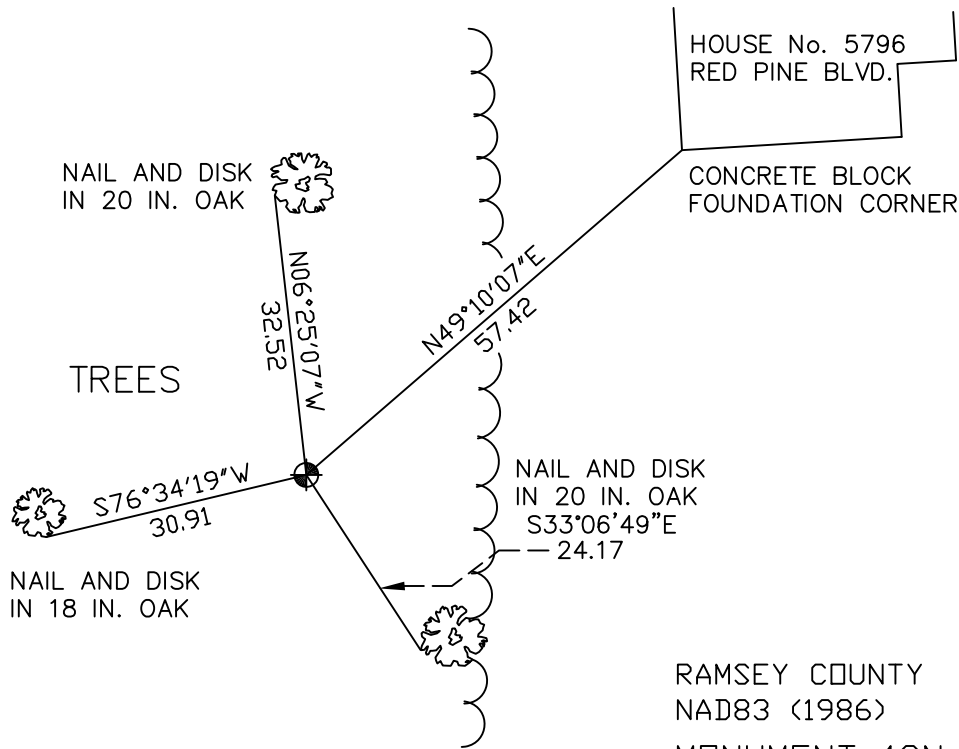
At the corner location shown on the sketch

On November 18, 2009 found a cast iron monument, down 0.5 feet.

left monument as found     lowered monument     removed monument (explain)

On \_\_\_\_\_ placed a \_\_\_\_\_

## SKETCH OF REFERENCE TIES



RAMSEY COUNTY  
NAD83 (1986)  
MONUMENT 49N

ALL DISTANCES ARE SHOWN IN U.S. SURVEY FEET.  
BEARINGS ARE FOR TIE REFERENCE PURPOSES ONLY.

X= 600322.788 (Easting)  
Y= 218937.014 (Northing)

Statements of evidence relative to this corner are on the following page(s).

I hereby certify that this document and the data contained herein was prepared by me or under my direct supervision this \_\_\_\_\_ day of \_\_\_\_\_, 20\_\_\_\_.

SIGNATURE

Minnesota License No. \_\_\_\_\_

- County Surveyor  
 Deputy County Surveyor     Land Surveyor

OFFICE OF COUNTY SURVEYOR  
County of Ramsey

I hereby certify that this document was filed in the County Surveyor's office on the \_\_\_\_\_ day of \_\_\_\_\_, 20\_\_\_\_.

SIGNATURE

Michael D. Fiebiger, P.L.S.  
Ramsey County Surveyor

## MONUMENT 49N

Found Monument No. 49 in swamp lying down; computed location and set a 20 in. cast iron monument on north and south quarter line, 330.00 ft. north of Monument No. 49; set sign and post +/-1 ft. west of monument, April 27, 1993.

Tied monument, April 28, 1993.

Retied monument, July 30, 2003.

Retied monument, November 18, 2009.