

MONUMENT 48E

CERTIFICATE OF LOCATION OF GOVERNMENT CORNER

Monument on the East-West Quarter line of Section 1, Township 30 North, Range 22 West, County of Ramsey, State of Minnesota.

At the corner location shown on the sketch

On August 31, 2009 found a cast iron monument, flush.

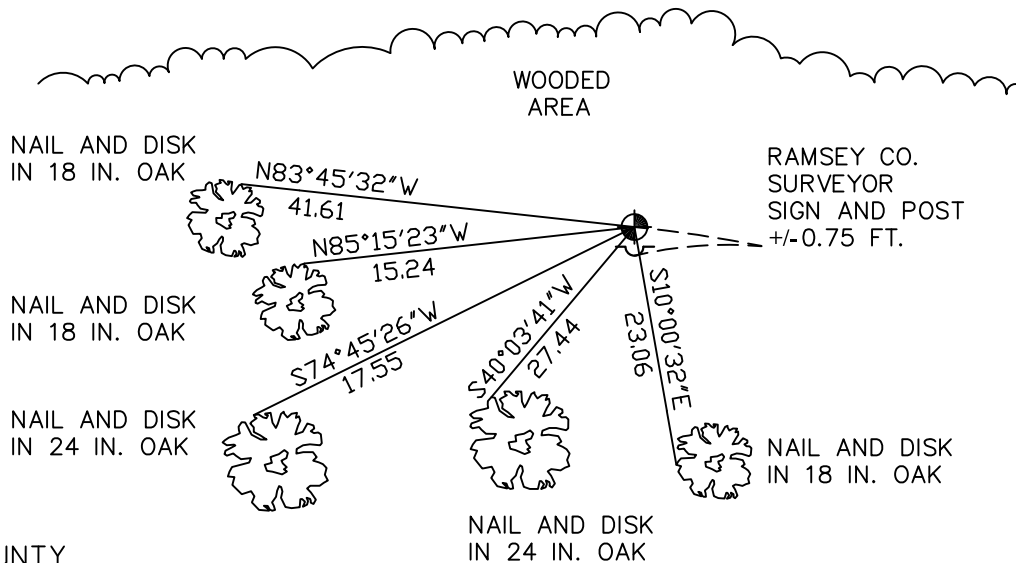
left monument as found lowered monument removed monument (explain)

On _____ placed a _____

SKETCH OF REFERENCE TIES



BENSON AIRPORT RUNWAY AREA



RAMSEY COUNTY
NAD83 (1986)

MONUMENT 48E

X= 599890.342 (Easting)
Y= 218605.260 (Northing)

ALL DISTANCES ARE SHOWN IN U.S. SURVEY FEET.
BEARINGS ARE FOR TIE REFERENCE PURPOSES ONLY.

Statements of evidence relative to this corner are on the following page(s).

I hereby certify that this document and the data contained herein was prepared by me or under my direct supervision this _____ day of _____, 20____.

SIGNATURE

Minnesota License No. _____

- County Surveyor
 Deputy County Surveyor Land Surveyor

OFFICE OF COUNTY SURVEYOR

County of Ramsey

I hereby certify that this document was filed in the County Surveyor's office on the _____ day of _____, 20____.

SIGNATURE

Michael D. Fiebiger, P.L.S.
Ramsey County Surveyor

MONUMENT 48E

Monument 49 is in swamp laying over; computed location and set a 20 in. cast iron monument on the quarter line 435 ft. west of monument 49; set a sign and post 1 ft. south of monument, April 27, 1993.

Retied monument, April 28, 1993.

Retied monument, July 30, 2003.

Retied monument, August 31, 2009.