

# MONUMENT 484

## CERTIFICATE OF LOCATION OF GOVERNMENT CORNER

West Quarter Corner of Section 24, Township 29 North, Range 22 West, County of Ramsey, State of Minnesota.

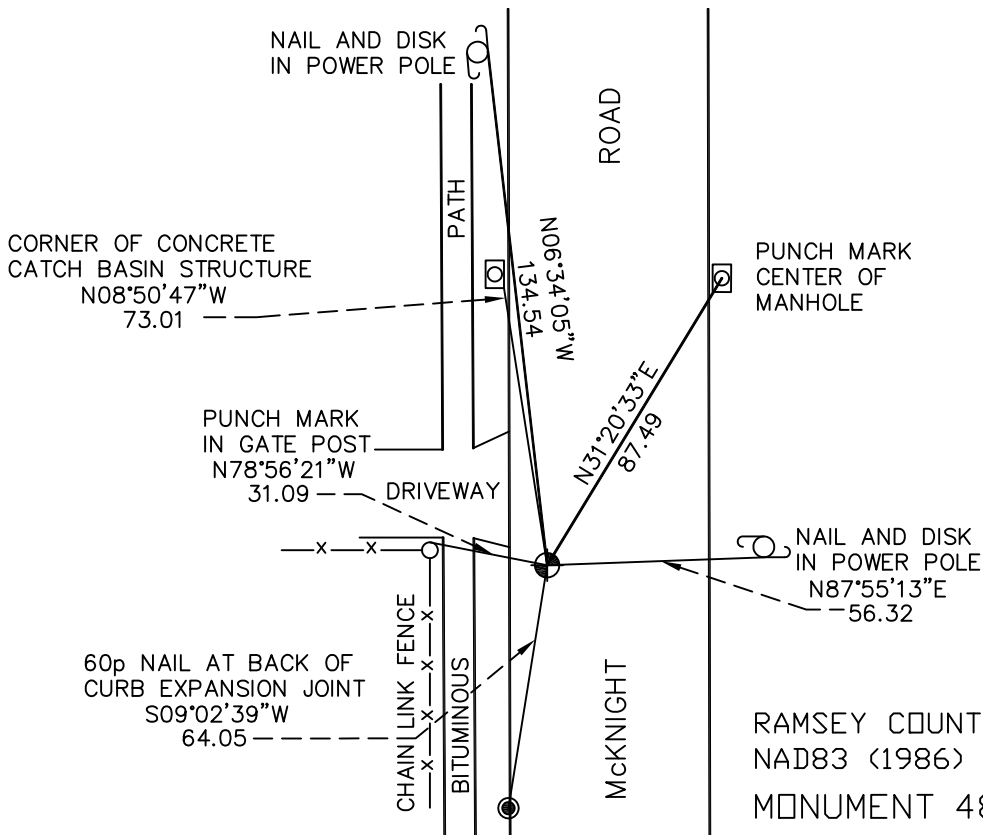
At the corner location shown on the sketch

On June 22, 2009 found a cast iron monument, within a cast iron manhole assembly.

left monument as found     lowered monument     removed monument (explain)

On \_\_\_\_\_ placed a \_\_\_\_\_

### SKETCH OF REFERENCE TIES



RAMSEY COUNTY  
NAD83 (1986)  
MONUMENT 484

ALL DISTANCES ARE SHOWN IN U.S. SURVEY FEET.  
BEARINGS ARE FOR TIE REFERENCE PURPOSES ONLY.

X= 597875.713 (Easting)  
Y= 170835.911 (Northing)

Statements of evidence relative to this corner are on the following page(s).

I hereby certify that this document and the data contained herein was prepared by me or under my direct supervision this \_\_\_\_\_ day of \_\_\_\_\_, 20\_\_\_\_.

SIGNATURE

Minnesota License No. \_\_\_\_\_

- County Surveyor  
 Deputy County Surveyor     Land Surveyor

OFFICE OF COUNTY SURVEYOR  
County of Ramsey

I hereby certify that this document was filed in the County Surveyor's office on the \_\_\_\_\_ day of \_\_\_\_\_, 20\_\_\_\_.

SIGNATURE

Michael D. Fiebiger, P.L.S.  
Ramsey County Surveyor

# MONUMENT 484

Found cast iron monument at grade, 1975.

Monument destroyed by road construction; reestablished location; set 20 in. cast iron monument, June 2, 1989.

Retied monument, August 15, 1989.

Monument removed for milling operation, March 31, 2004.

Monument replaced after milling operation; cast iron manhole assembly placed around monument, June, 2004.

Retied monument, July 20, 2004.

Retied monument, June 22, 2009.