

MONUMENT 420

CERTIFICATE OF LOCATION OF GOVERNMENT CORNER

East Quarter Corner of Section 17, Township 29 North, Range 23 West, County of Ramsey, State of Minnesota.

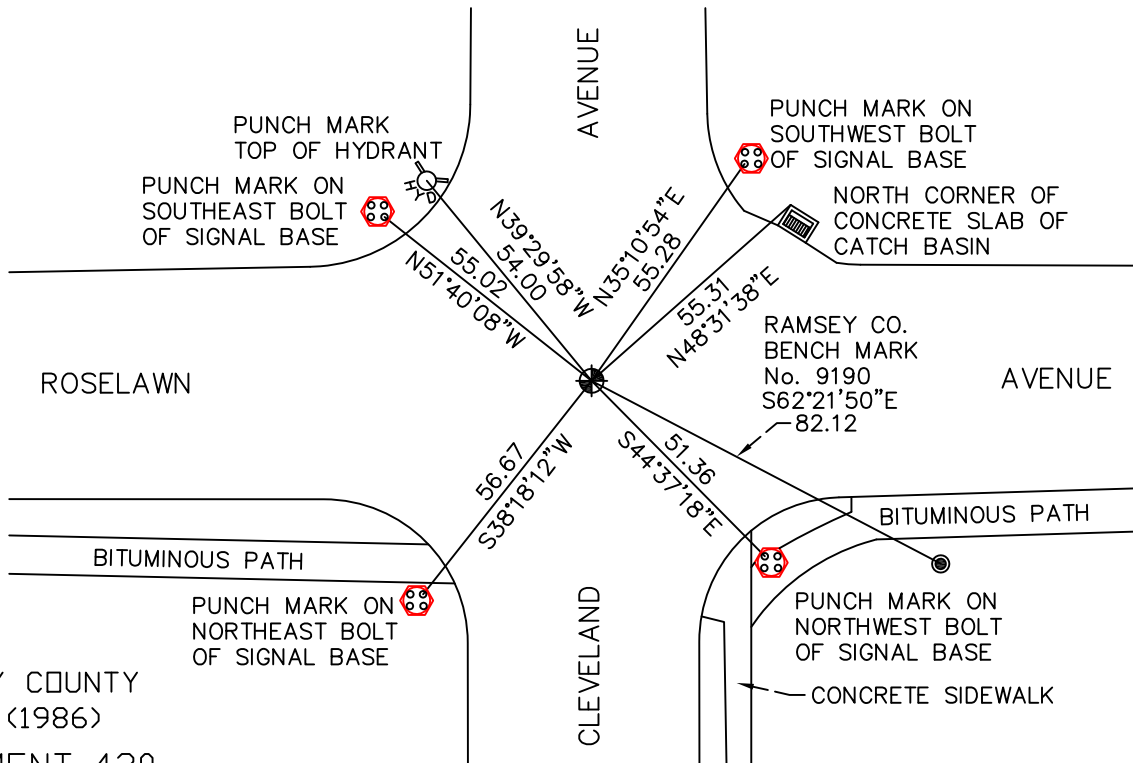
At the corner location shown on the sketch

On June 18, 2009 found cast iron monument, flush.

left monument as found lowered monument removed monument (explain)

On _____ placed a _____

SKETCH OF REFERENCE TIES



RAMSEY COUNTY
NAD83 (1986)
MONUMENT 420

X= 550757.881 (Easting)
Y= 175832.638 (Northing)

ALL DISTANCES ARE SHOWN IN U.S. SURVEY FEET.
BEARINGS ARE FOR TIE REFERENCE PURPOSES ONLY.

Statements of evidence relative to this corner are on the following page(s).

I hereby certify that this document and the data contained herein was prepared by me or under my direct supervision this _____ day of _____, 20____.

SIGNATURE

Minnesota License No. _____

- County Surveyor
 Deputy County Surveyor Land Surveyor

OFFICE OF COUNTY SURVEYOR
County of Ramsey

I hereby certify that this document was filed in the County Surveyor's office on the _____ day of _____, 20____.

SIGNATURE

Michael D. Fiebiger, P.L.S.
Ramsey County Surveyor

MONUMENT 420

Found a nail at surface. Granite monument down 0.58 ft., June 22, 1976.

Checked monument, July 29, 1977.

Set a short cast iron monument, August 4, 1977.

Tied monument, August 12, 1984.

Retied monument, May 12, 1989.

Removed short cast iron monument for Construction Department for Cleveland Avenue, April 9, 1993.

Relocated position and set P.K. nails and tied, August 3, 1994.

Set a 20 inch cast iron monument, October, 1994.

Tied monument, found flush, August 18, 2003.

Retied monument, June 18, 2009.