

# MONUMENT 416

## CERTIFICATE OF LOCATION OF GOVERNMENT CORNER

North Quarter Corner of Section 13, Township 29 North, Range 22 West, County of Ramsey, State of Minnesota.

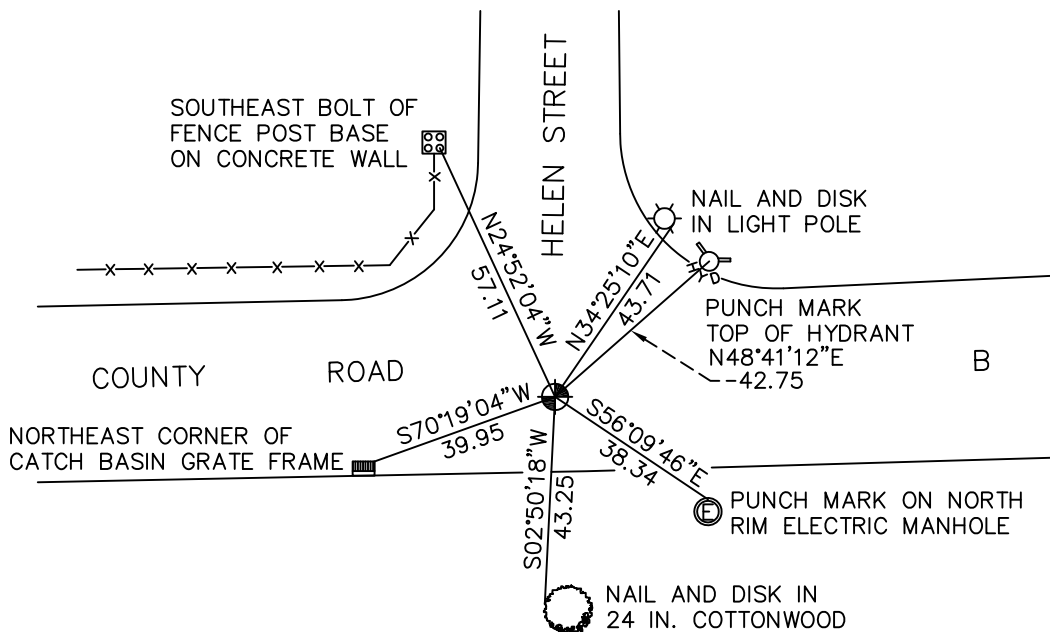
At the corner location shown on the sketch

On June 23, 2009 found a cast iron monument, within a cast iron manhole assembly.

left monument as found     lowered monument     removed monument (explain)

On \_\_\_\_\_ placed a \_\_\_\_\_

## SKETCH OF REFERENCE TIES



RAMSEY COUNTY

NAD83 (1986)

MONUMENT 416

X= 600492.881 (Easting)  
Y= 178789.769 (Northing)

ALL DISTANCES ARE SHOWN IN U.S. SURVEY FEET.  
BEARINGS ARE FOR TIE REFERENCE PURPOSES ONLY.

Statements of evidence relative to this corner are on the following page(s).

I hereby certify that this document and the data contained herein was prepared by me or under my direct supervision this \_\_\_\_\_ day of \_\_\_\_\_, 20\_\_\_\_.

SIGNATURE

Minnesota License No. \_\_\_\_\_

- County Surveyor  
 Deputy County Surveyor     Land Surveyor

OFFICE OF COUNTY SURVEYOR

County of Ramsey

I hereby certify that this document was filed in the County Surveyor's office on the \_\_\_\_\_ day of \_\_\_\_\_, 20\_\_\_\_.

SIGNATURE

Michael D. Fiebiger, P.L.S.  
Ramsey County Surveyor

## MONUMENT 416

Found a granite monument down +/- 3 in.; placed a cast iron cap and bolt monument, July 10, 1975.

Tied monument, February 18, 1976.

Removed cap monument for construction, April 9, 1990.

Tied monument and placed P.K. nails, September 4, 1990.

Placed a 20 in. cast iron monument and tied, November 5, 1990.

Retied monument, found flush, April 10, 2003.

Reset a 20 in. cast iron monument, down 1 ft., within a cast iron manhole assembly, July 27, 2005.

Tied monument, June 23, 2009.