

# MONUMENT 390

## CERTIFICATE OF LOCATION OF GOVERNMENT CORNER

West Quarter Corner of Section 11, Township 29 North, Range 22 West, County of Ramsey, State of Minnesota.

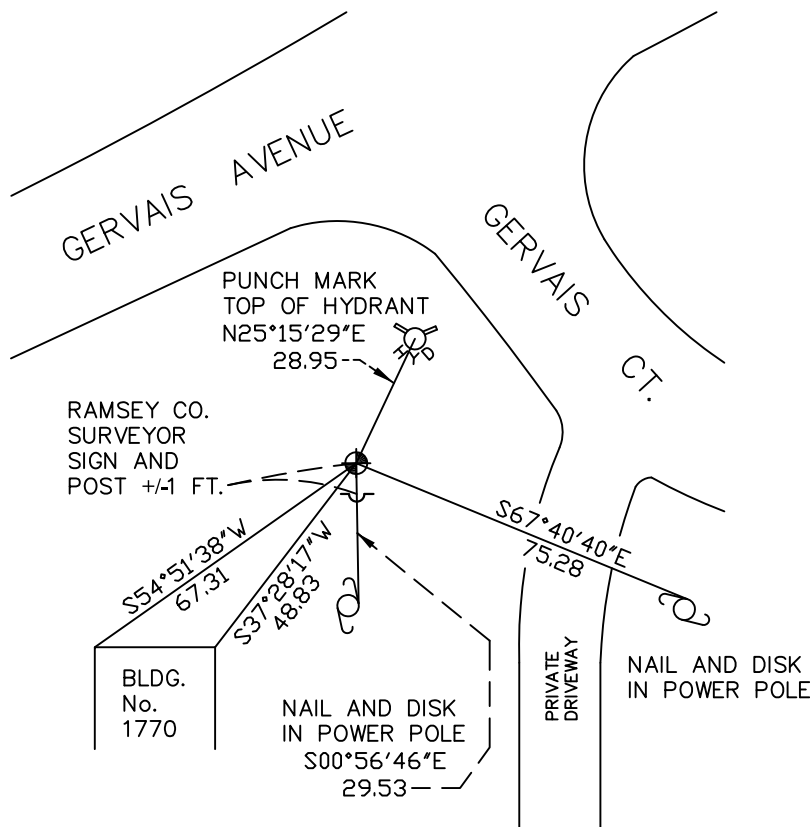
At the corner location shown on the sketch

On June 26, 2009 found a cast iron monument, down 0.35 feet.

left monument as found     lowered monument     removed monument (explain)

On \_\_\_\_\_ placed a \_\_\_\_\_

### SKETCH OF REFERENCE TIES



RAMSEY COUNTY  
NAD83 (1986)  
MONUMENT 390

X= 592621.534 (Easting)  
Y= 181329.908 (Northing)

ALL DISTANCES ARE SHOWN IN U.S. SURVEY FEET.  
BEARINGS ARE FOR TIE REFERENCE PURPOSES ONLY.

Statements of evidence relative to this corner are on the following page(s).

I hereby certify that this document and the data contained herein was prepared by me or under my direct supervision this \_\_\_\_\_ day of \_\_\_\_\_, 20\_\_\_\_.

SIGNATURE

Minnesota License No. \_\_\_\_\_

- County Surveyor  
 Deputy County Surveyor     Land Surveyor

OFFICE OF COUNTY SURVEYOR  
County of Ramsey

I hereby certify that this document was filed in the County Surveyor's office on the \_\_\_\_\_ day of \_\_\_\_\_, 20\_\_\_\_.

SIGNATURE

Michael D. Fiebiger, P.L.S.  
Ramsey County Surveyor

## MONUMENT 390

Found 3/4 in. diameter, +/-1 1/2 ft. long iron; dug down 4 ft. and found nothing, September 3, 1974.

Placed P.K. nails for lining only. Used foundation in southwesterly direction and concrete reference monument to the northwesterly direction. Concrete reference monument to southwest and southeast tipped or broken off, September 16, 1974.

Placed a cast iron monument and tied, August 25, 1975.

Retied monument, August 9, 1990.

Placed sign and post, February 8, 1991.

Retied monument, April 9, 2003.

Retied monument, June 26, 2009.