

# MONUMENT 376

## CERTIFICATE OF LOCATION OF GOVERNMENT CORNER

East Quarter Corner of Section 9, Township 29 North, Range 23 West, County of Ramsey, State of Minnesota.

At the corner location shown on the sketch

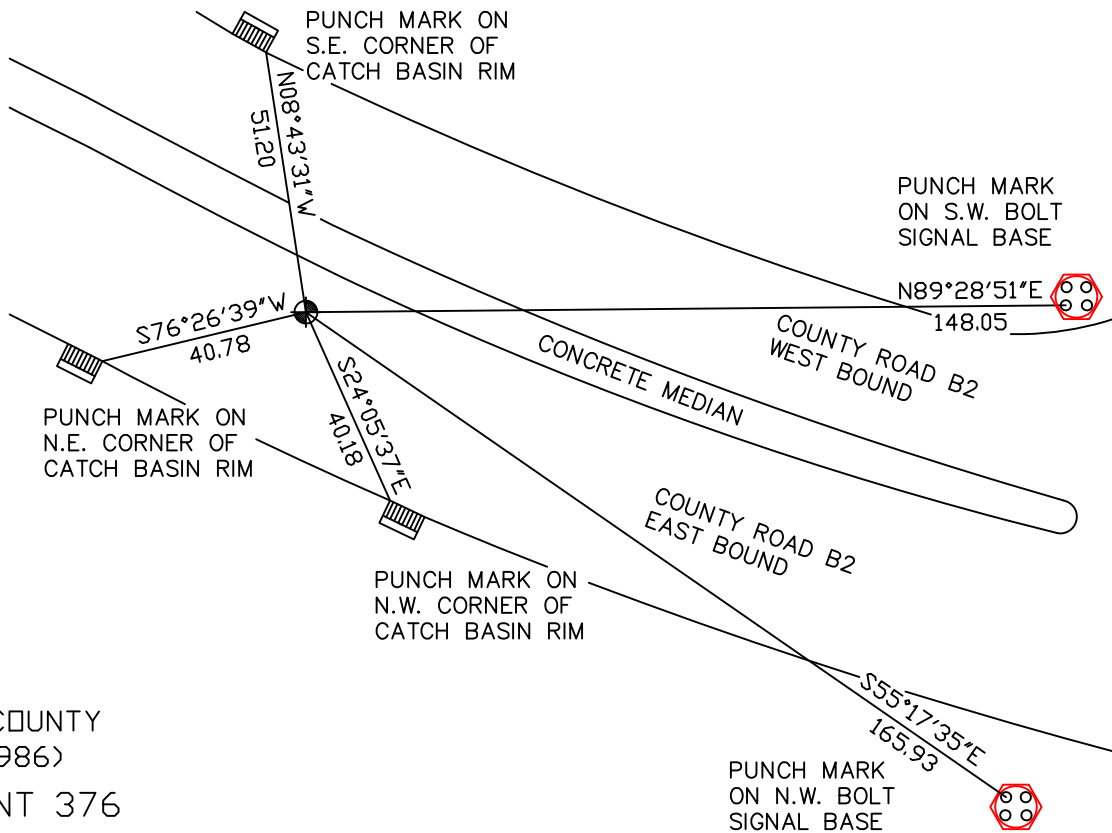
On July 20, 2009 found a cast iron monument, flush.

Monument is located under the north bound Snelling Avenue bridge.

left monument as found     lowered monument     removed monument (explain)

On \_\_\_\_\_ placed a \_\_\_\_\_

### SKETCH OF REFERENCE TIES



RAMSEY COUNTY  
NAD83 (1986)

MONUMENT 376

X= 555994.887 (Easting)  
Y= 181116.872 (Northing)

ALL DISTANCES ARE SHOWN IN U.S. SURVEY FEET.  
BEARINGS ARE FOR TIE REFERENCE PURPOSES ONLY.

Statements of evidence relative to this corner are on the following page(s).

I hereby certify that this document and the data contained herein was prepared by me or under my direct supervision this \_\_\_\_\_ day of \_\_\_\_\_, 20\_\_\_\_.

SIGNATURE

Minnesota License No. \_\_\_\_\_

- County Surveyor  
 Deputy County Surveyor     Land Surveyor

OFFICE OF COUNTY SURVEYOR  
County of Ramsey

I hereby certify that this document was filed in the County Surveyor's office on the \_\_\_\_\_ day of \_\_\_\_\_, 20\_\_\_\_.

SIGNATURE

Michael D. Fiebiger, P.L.S.  
Ramsey County Surveyor

# MONUMENT 376

Found a cast iron monument flush, 1974.

Monument checked, July 15, 1977.

Comparing old road map for Snelling Avenue and G.P.S. work, monument appears to be in correct location. Angles and distances compare good between the northeast corner and the southeast corner of Section 9, February 3, 1988.

Found monument with the top broken off, August 13, 1990.

Removed old cast iron monument; placed a 20 in. cast iron monument and tied, August 14, 1990.

Retied monument, July 20, 2009.