

MONUMENT 350

CERTIFICATE OF LOCATION OF GOVERNMENT CORNER

South Quarter Corner of Section 5, Township 29 North, Range 23 West, County of Ramsey, State of Minnesota.

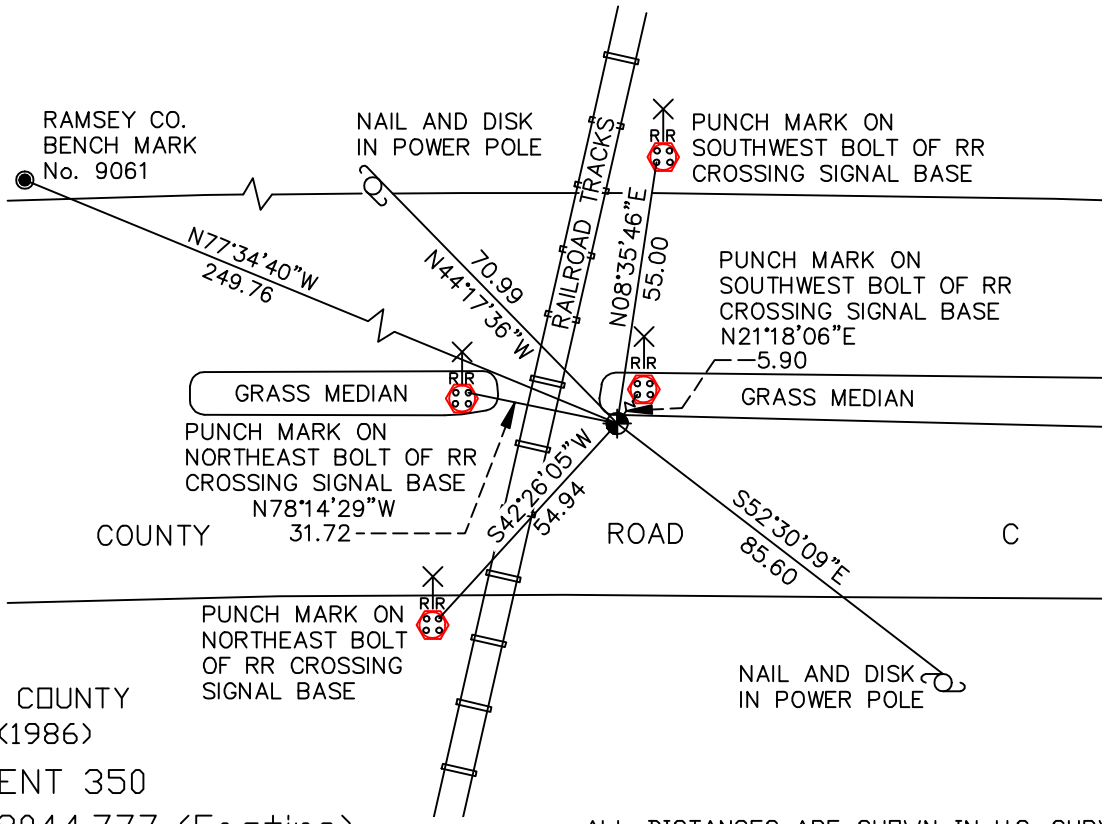
At the corner location shown on the sketch

On July 1, 2009 found a cast iron monument, flush in concrete curb.

left monument as found lowered monument removed monument (explain)

On _____ placed a _____

SKETCH OF REFERENCE TIES



RAMSEY COUNTY
NAD83 (1986)
MONUMENT 350

X= 548044.777 (Easting)
Y= 183714.831 (Northing)

ALL DISTANCES ARE SHOWN IN U.S. SURVEY FEET.
BEARINGS ARE FOR TIE REFERENCE PURPOSES ONLY.

Statements of evidence relative to this corner are on the following page(s).

I hereby certify that this document and the data contained herein was prepared by me or under my direct supervision this _____ day of _____, 20____.

SIGNATURE

Minnesota License No. _____

County Surveyor
 Deputy County Surveyor Land Surveyor

OFFICE OF COUNTY SURVEYOR
County of Ramsey

I hereby certify that this document was filed in the County Surveyor's office on the _____ day of _____, 20____.

SIGNATURE

Michael D. Fiebiger, P.L.S.
Ramsey County Surveyor

MONUMENT 350

Found nothing; reestablished position from survey by Ray Wolfgram. Set a cast iron monument, August 15, 1975.

Monument destroyed by construction in 1979.

Ties in Section folder.

Replaced cast iron monument and tied, +/- 1981.

Retied monument, August 6, 2002.

Retied monument, July 1, 2009.