

# MONUMENT 347

## CERTIFICATE OF LOCATION OF GOVERNMENT CORNER

Center of Section 1, Township 29 North, Range 22 West, County of Ramsey,  
State of Minnesota.

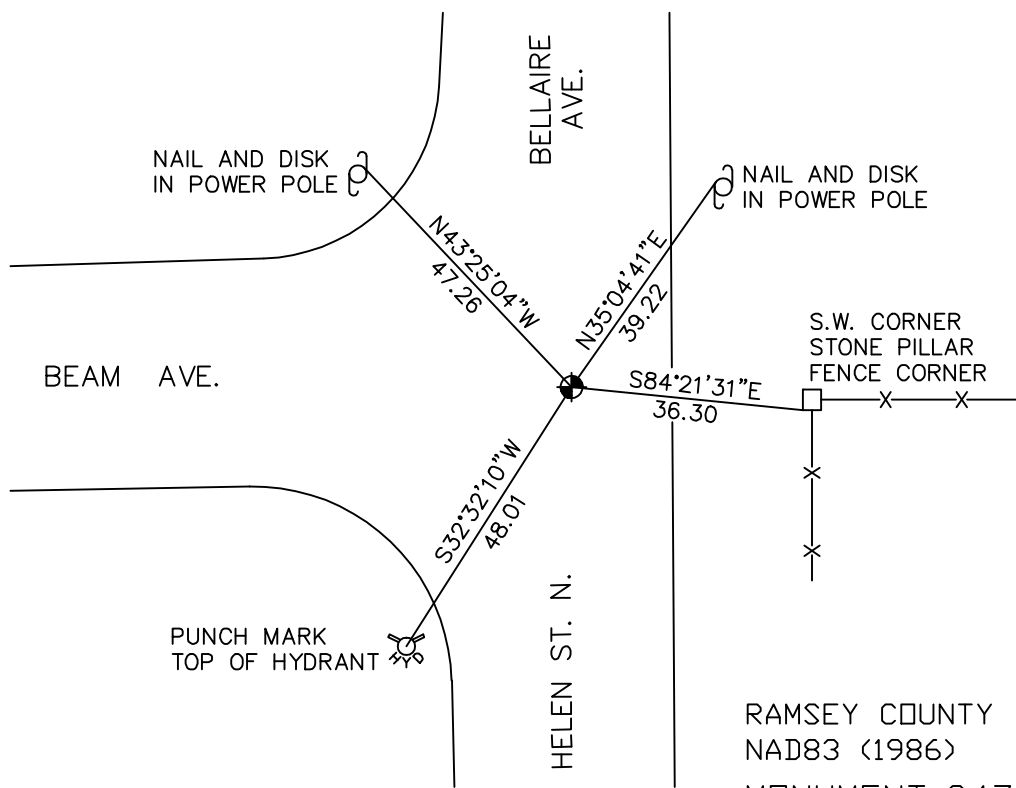
At the corner location shown on the sketch

On July 6, 2009 found a cast iron monument, down 0.2 feet.

left monument as found     lowered monument     removed monument (explain)

On \_\_\_\_\_ placed a \_\_\_\_\_

### SKETCH OF REFERENCE TIES



RAMSEY COUNTY  
NAD83 (1986)  
MONUMENT 347

ALL DISTANCES ARE SHOWN IN U.S. SURVEY FEET.  
BEARINGS ARE FOR TIE REFERENCE PURPOSES ONLY.

X= 600429.960 (Easting)  
Y= 186708.878 (Northing)

Statements of evidence relative to this corner are on the following page(s).

I hereby certify that this document and the data contained herein was prepared by me or under my direct supervision this \_\_\_\_\_ day of \_\_\_\_\_, 20\_\_\_\_.

SIGNATURE

Minnesota License No. \_\_\_\_\_

- County Surveyor  
 Deputy County Surveyor     Land Surveyor

OFFICE OF COUNTY SURVEYOR  
County of Ramsey

I hereby certify that this document was filed in the County Surveyor's office on the \_\_\_\_\_ day of \_\_\_\_\_, 20\_\_\_\_.

SIGNATURE

Michael D. Fiebiger, P.L.S.  
Ramsey County Surveyor

## MONUMENT 347

Found a granite monument down 0.87 ft., July 17, 1975.

Set a cast iron monument over granite monument, May 25, 1976.

Monument checked, September 12, 1977.

Monument checked, July 18, 1984.

Tied monument, August 15, 1990.

Tied monument for City, May 9, 1996.

Set a 20 in. cast iron monument, August 27, 1997.

Tied monument, April 10, 2003.

Tied out monument for possible removal during road reconstruction, July 15, 2008.

Retied monument, July 6, 2009.